

T15 S, E 32 B, U.M.

RECEIVED  
FEB 11 1986  
WATER RESOURCES DEPT  
SALEM, OREGON

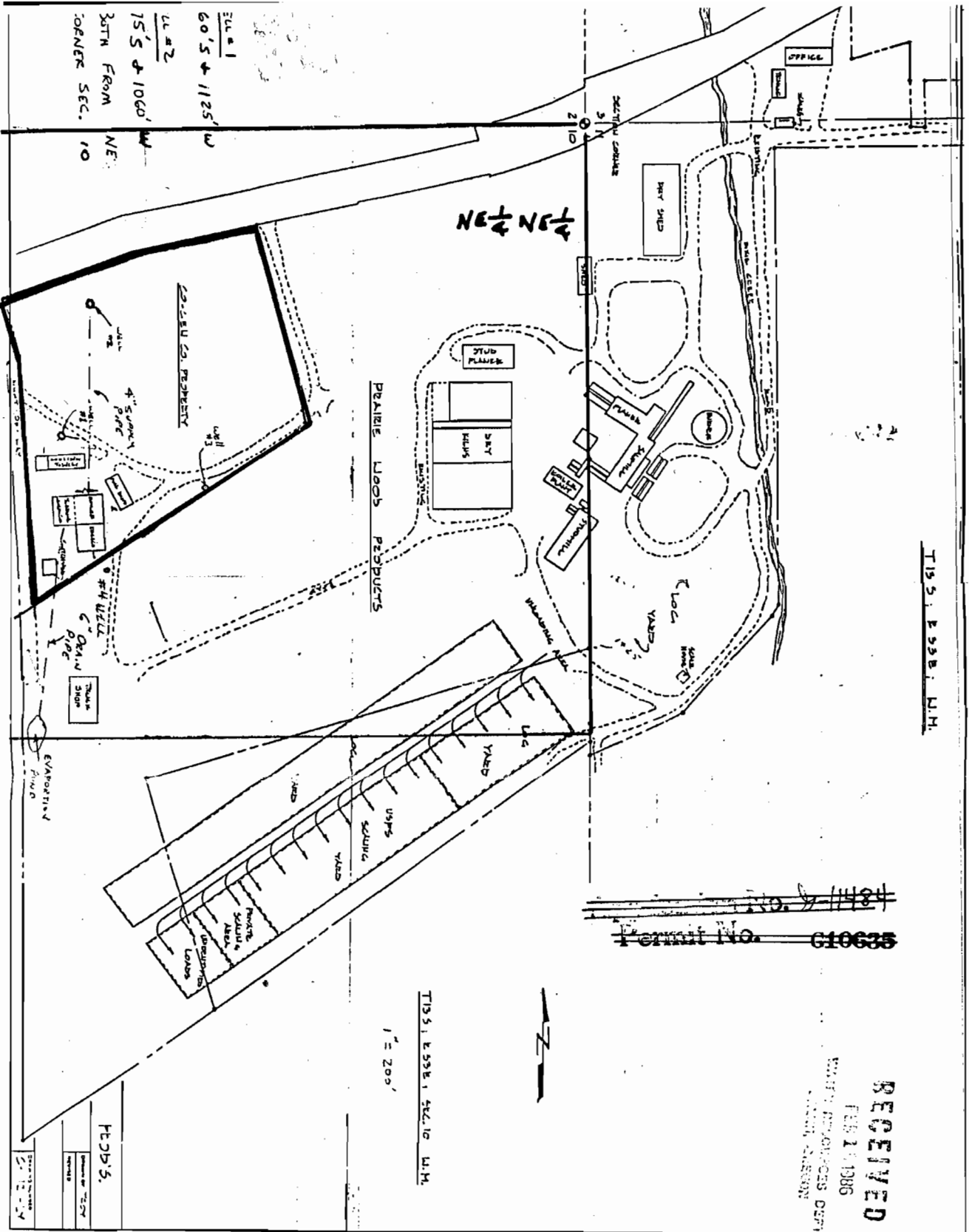
Permit No. G10635

RECEIVED  
MAY 24 1987  
WATER RESOURCES DEPT  
SALEM, OREGON

Application No. G-11635  
Permit No. G10752

Well No: 4  
950 feet South and  
1050 feet West of the  
NE corner

Wells No. 1, 2, 3 are  
covered by Permit G-10635



ELEV 1  
 60' S + 1125' W  
 LL #2  
 75' S + 1060' W  
 30TH FROM  
 CORNER SEC. 10

NE 1/4 NE 1/4

PEANUT LOOP PRODUCE

EVAPORATED MILK



T15 S, E 32 B, U.M.  
 1" = 200'

FD-35

WATER RESOURCES DEPT.  
SALEM, OREGON

MAY 10 1987

RECEIVED