

S.E. 1/4 S.W. 1/4 SEC. 10, T.3N., R.24E.

2 Acres Irrigated - 31.6 cfm/minute  
Industrial - 8.4 cfm/minute

RECEIVED

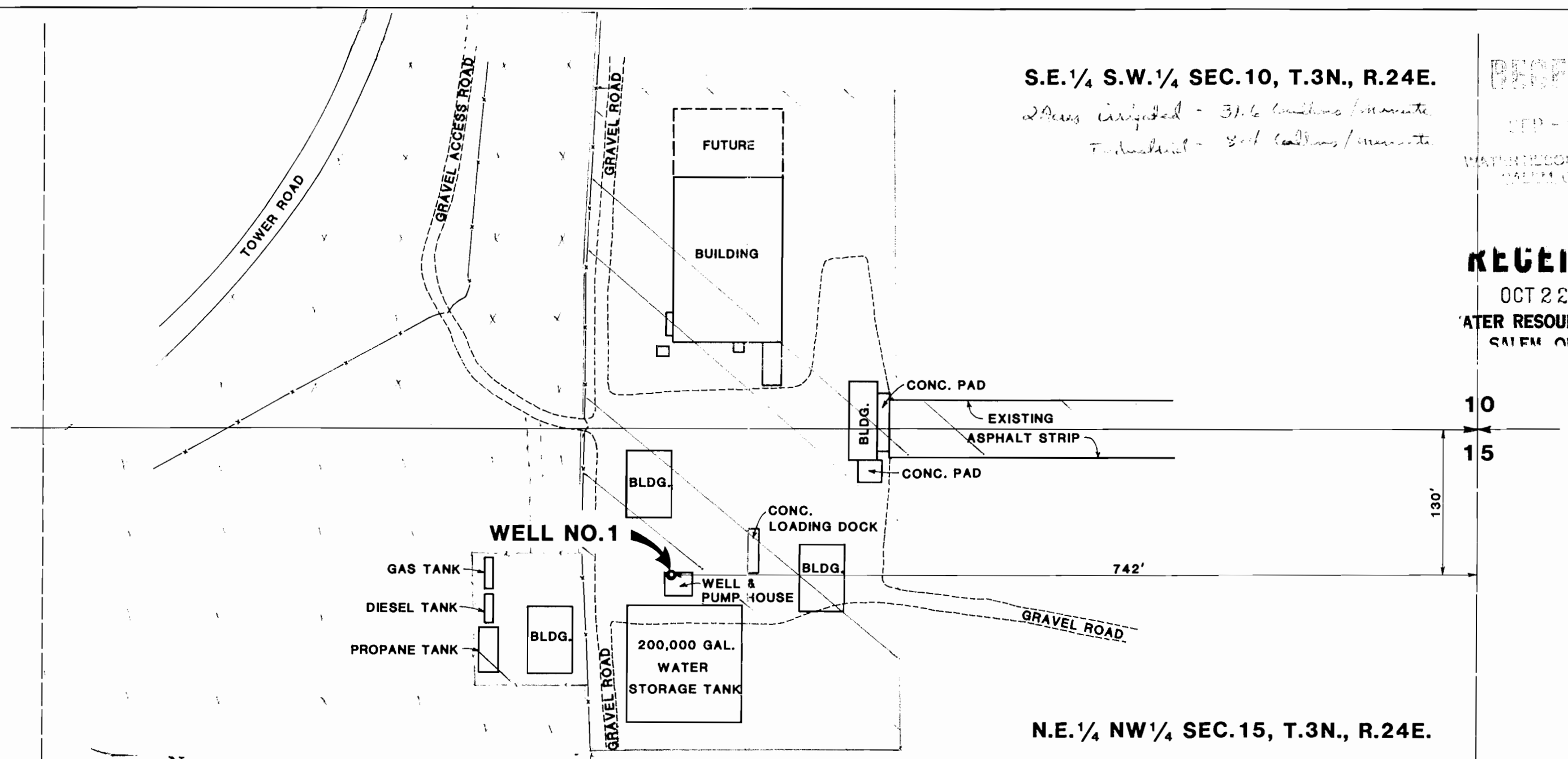
OCT 1 1987

WATER RESOURCES DEPT.  
SALEM, OREGON

RECEIVED

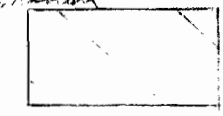
OCT 22 1987

WATER RESOURCES DEPT.  
SALEM, OREGON



N.E. 1/4 NW 1/4 SEC. 15, T.3N., R.24E.

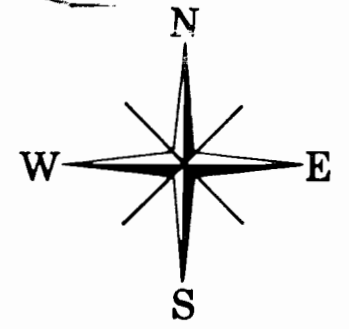
3 Acres Irrigated 47.4 cfm/minute  
Industrial - 12.6 cfm/minute



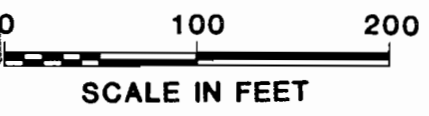
INDUSTRIAL



IRRIGATION



RECEIVED



SCALE IN FEET

FEB 9 1987

MAP PREPARED BY: SHANNON & WILSON, INC.  
Geotechnical Consultants  
Portland, Oregon

Application No. G-11606

Permit No. G10775

BOEING AGRI-INDUSTRIAL CO.  
BOARDMAN, OREGON

BOEING ANTENNA RANGE  
WELL NO. 1

AUGUST, 1986