

RECEIVED

DEC 21 1997

WATER RESOURCES DEPT.  
SALEM, OREGON

RECEIVED

APR 02 2001  
WATER RESOURCES DEPT.  
SALEM, OREGON

NW1/4 Sec. 25 T.6N. R.35E.W.M.  
UMATILLA COUNTY

6N 35 25B

Application No. **9-11643**  
Permit No. **G10785**

1" = 200'

See Map 6N 35 24C

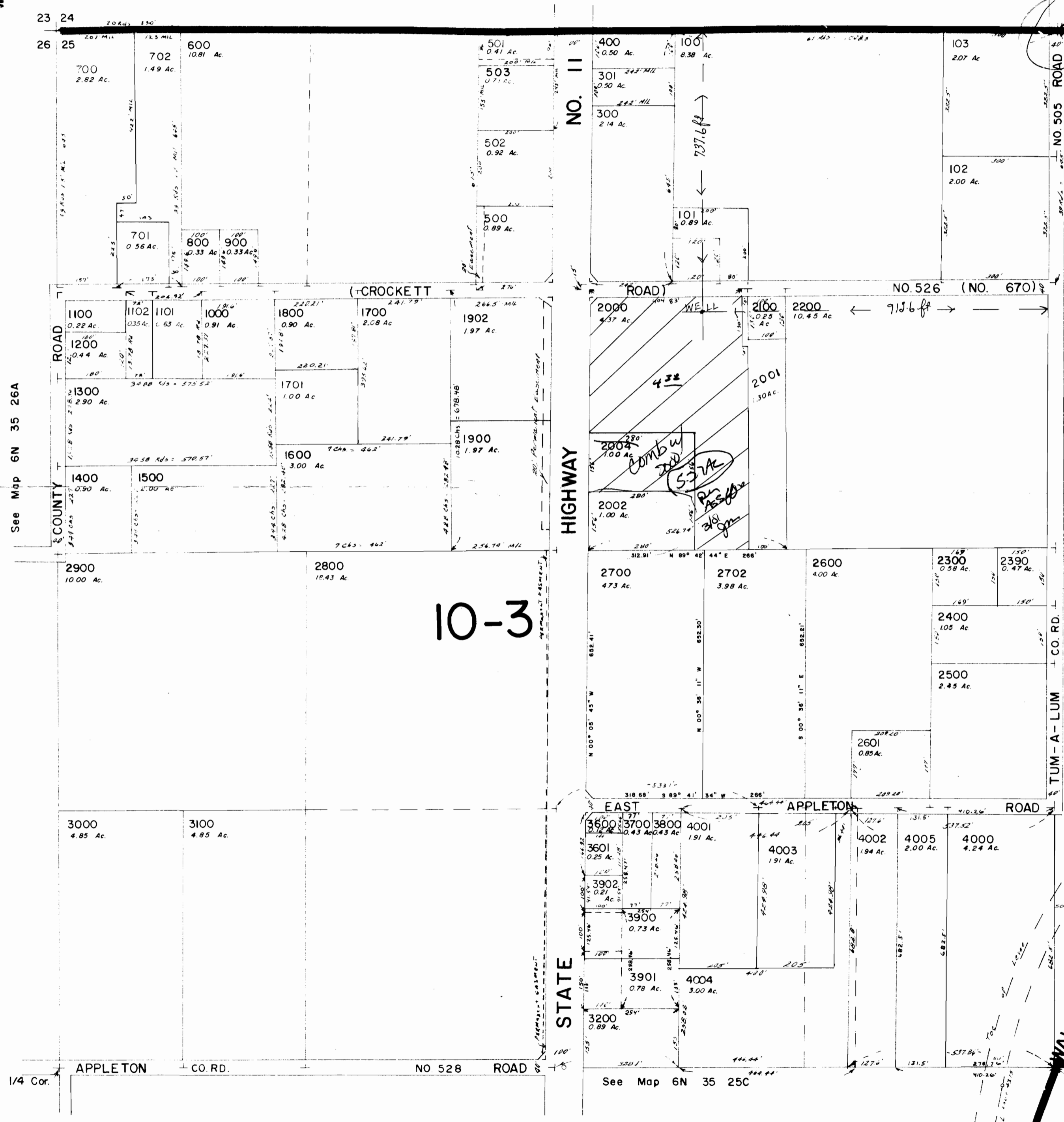
Aerial Photo No. NZ-6P-64



NE CORNER  
of NE 1/4  
of NW 1/4  
1/4 Cor.

CANCELLED

- T.L. 3602
- 1901
- 504
- 302
- 2003
- 2801
- 2701
- 200
- 3500
- 3400
- 3500
- 3301



See Map 6N 35 26A

See Map 6N 35 25A

10-3

APR 02 2001  
WATER RESOURCES DEPT.  
SALEM, OREGON

RECEIVED

1/4 Cor. Ctr. Sec.

See Map 6N 35 25C