

T. 3 S., R. 1 W., W. M.
Scale 1" = 400'

RECEIVED

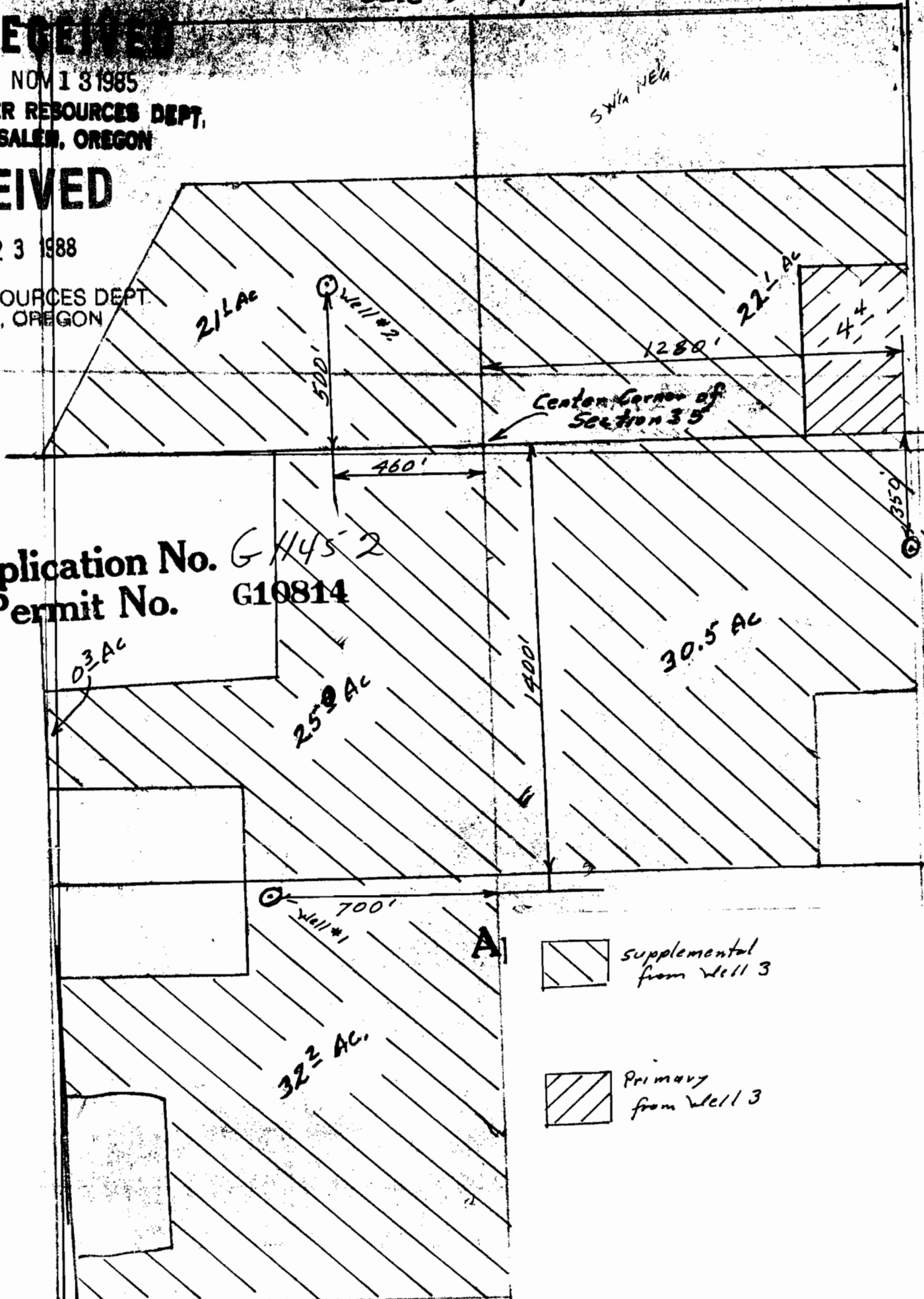
NOV 13 1985
WATER RESOURCES DEPT.
SALEM, OREGON

RECEIVED

JUN 23 1988

WATER RESOURCES DEPT.
SALEM, OREGON

Application No. G 1145-2
Permit No. G10814



SW 1/4 NE 1/4

2.1 AC

2.2 AC

4.4

1280'

Well #2

500'

Center Corner of Section 35

460'

Well #3

350'

30.5 AC

0.3 AC

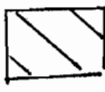
2.5 AC

1400'

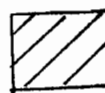
Well #1

700'

A



supplemental from Well 3



Primary from Well 3

32.2 AC