

WATER RESOURCES DEPT.
SALEM, OREGON

RECEIVED

NOV 20 1987

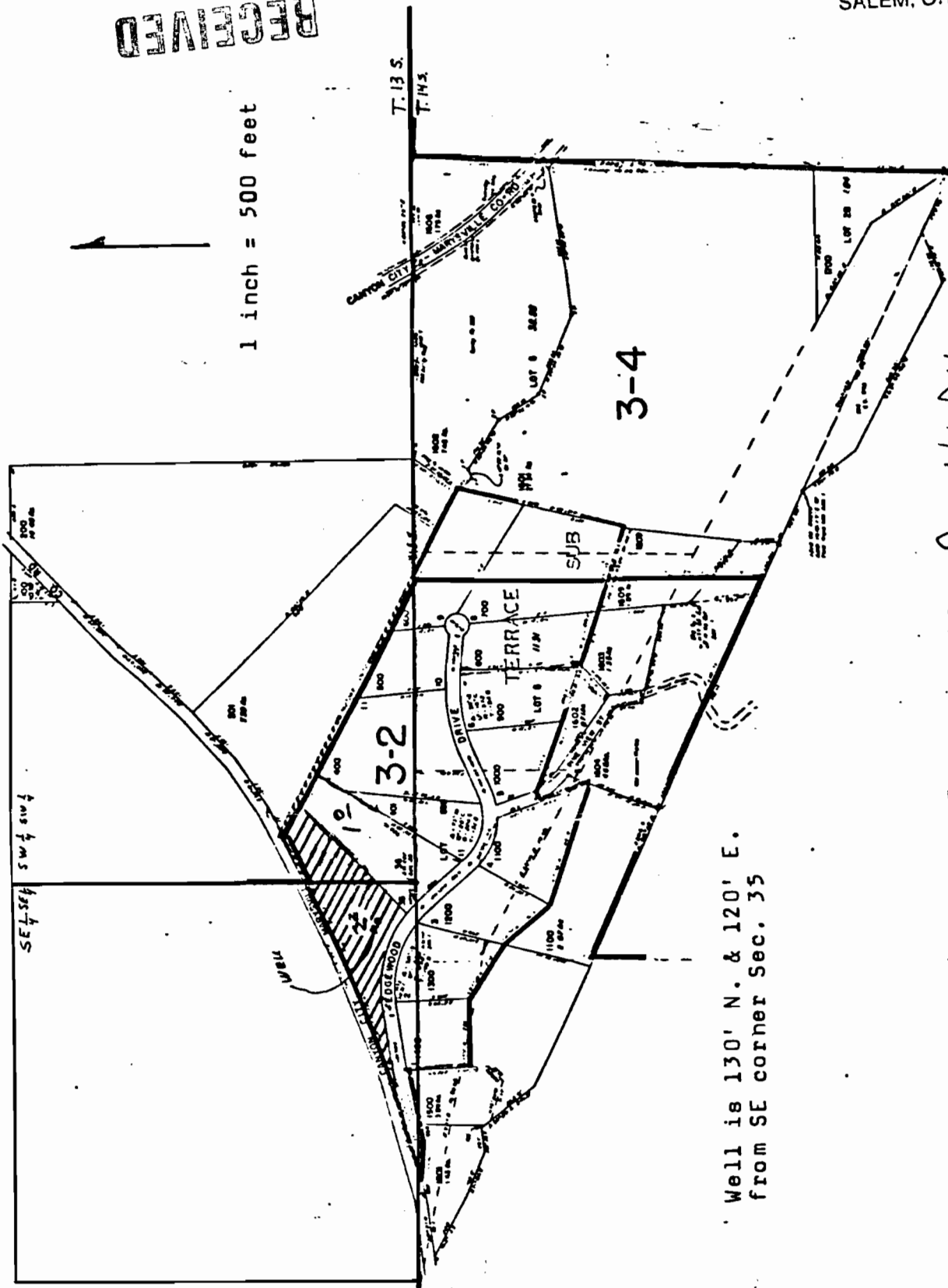
RECEIVED

JUL 01 1987 PT.

WATER RESOURCES DEPT.
SALEM, OREGON

13 31

T13S R31E W.M.



Well is 130' N. & 120' E.
from SE corner Sec. 35

Application No. *D-11674*
Permit No. *G10822*