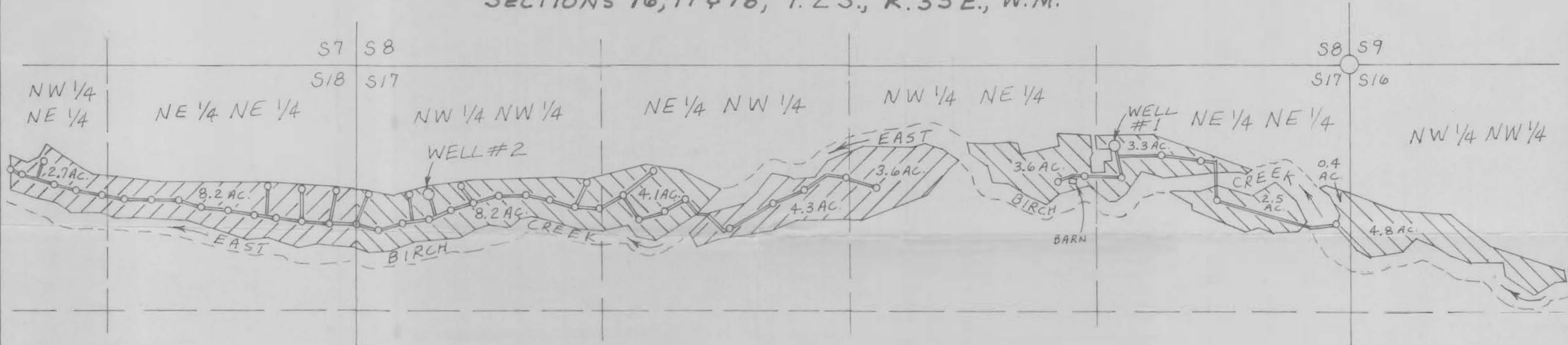


RECEIVED

MAR 23 1992

WATER RESOURCES DEPT.
SALEM, OREGON

FINAL PROOF SURVEY AND CLAIM OF BENEFICIAL USE
AND
APPLICATION TO APPROPRIATE GROUND WATER
SECTIONS 16, 17 & 18, T. 2 S., R. 33 E., W.M.



FINAL PROOF OF BENEFICIAL USE - APPLICATION G-11873
PERMIT G-10861

LOCATION	SOURCE	AREA	1875 RIGHT
NW 1/4 NW 1/4 S16	WELL #1	4.8 ACRES	NONE
NE 1/4 NE 1/4 S17	WELL #1	6.2 ACRES	6 ACRES
NW 1/4 NE 1/4 S17	WELL #1	3.6 ACRES	3 ACRES
NE 1/4 NW 1/4 S17	WELL #2	4.1 ACRES	4 ACRES
NW 1/4 NW 1/4 S17	WELL #2	8.2 ACRES	4 ACRES
TOTALS:		26.9 ACRES	17 ACRES

LOCATION OF WELLS

FROM SECTION CORNER 8, 9, 16 & 17:
WELL #1 IS 432' S & 1,234' W
WELL #2 IS 651' S & 4,881' W

LEGEND

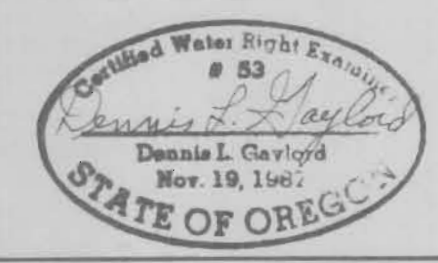
- = SECTION CORNER TIED (FOUND MARKED STONE)
- = WELL
- = RISER
- = BURIED DISTRIBUTION LINE
- = AREA UNDER IRRIGATION - BENEFICIAL USE
- = PLACE OF USE - GROUND WATER APPLICATION

APPLICATION - PLACE OF USE
AND SOURCE

LOCATION	SOURCE	AREA	1875 RIGHT
NW 1/4 NE 1/4 S17	WELL #2	3.6 ACRES	NONE
NE 1/4 NW 1/4 S17	WELL #2	4.3 ACRES	NONE
NE 1/4 NE 1/4 S18	WELL #2	8.2 ACRES	5 ACRES
NW 1/4 NE 1/4 S18	WELL #2	2.7 ACRES	NONE
TOTALS:		18.8 ACRES	5 ACRES

THIS MAP IS PREPARED FOR THE EXPRESS PURPOSE TO SHOW WATER APPROPRIATION AND USE. IT IS NOT INTENDED TO SHOW OR LOCATE PROPERTY OWNERSHIP LINES.

APPLICANT:
LOUISIANA-PACIFIC
P.O. Box 4000-98
HAYDEN LAKE, IDAHO
83835



DENNIS L. GAYLORD, CWRE
4107 S.W. LAKE DRIVE
PENDLETON, OR. 97801
503-276-6260