

YAMHILL, COUNTY

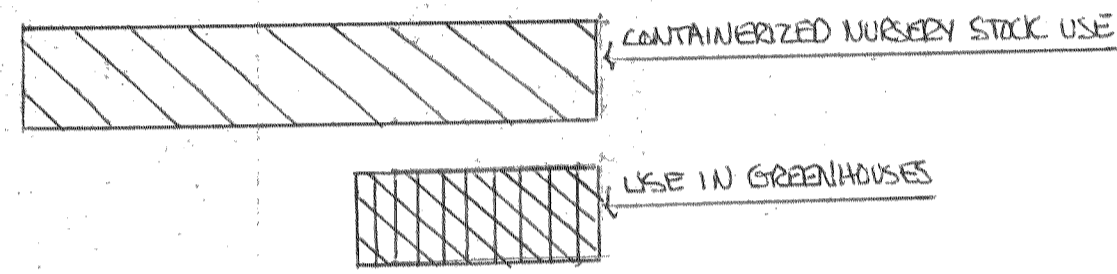
SEE SEC. 4 3 19

CANCELLED 600

1" = 400'

24 19  
25 30

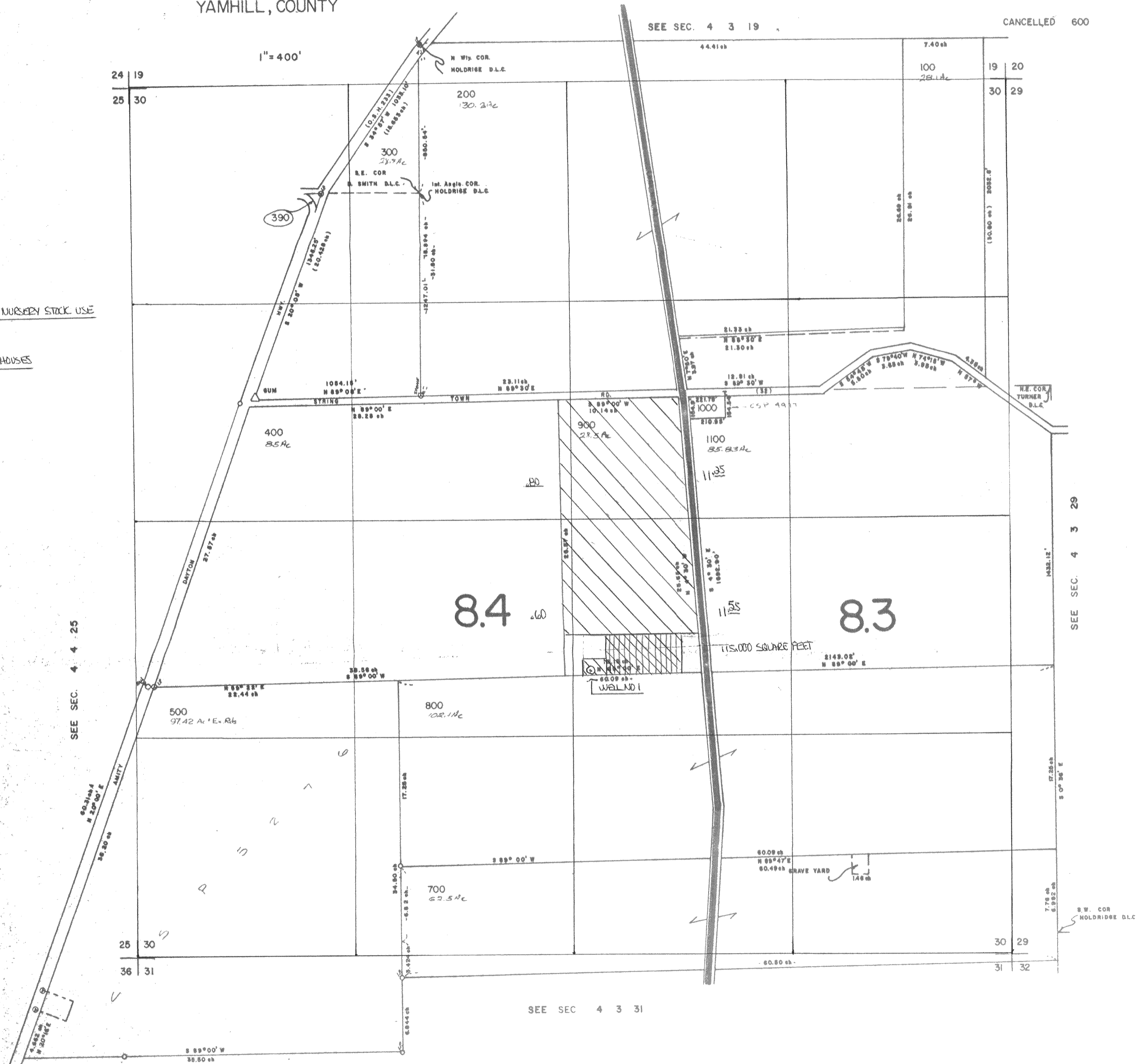
19 20  
30 29



WELL NO. 1 LOCATION

2780 FEET EAST OF NW CORNER SECTION 30 AND  
3580 FEET SOUTH OF NW CORNER SECTION 30

SEE SEC. 4 4 25



RECEIVED  
NOV 9 1987  
WATER RESOURCES DE  
SALEM, OREGON

Application No. Y-11735  
Permit No. G-10867

SEE SEC 4 3 31

SEE SEC. 4 3 29