

RECEIVED

JUN 07 1987

39 08 14D

SE1/4 SEC. 14 T.39S. R.08E. W.M.
KLAMATH COUNTY

WATER RESOURCES DEPT.
SALEM, OREGON

THIS MAP WAS PREPARED FOR
ASSESSMENT PURPOSE ONLY.

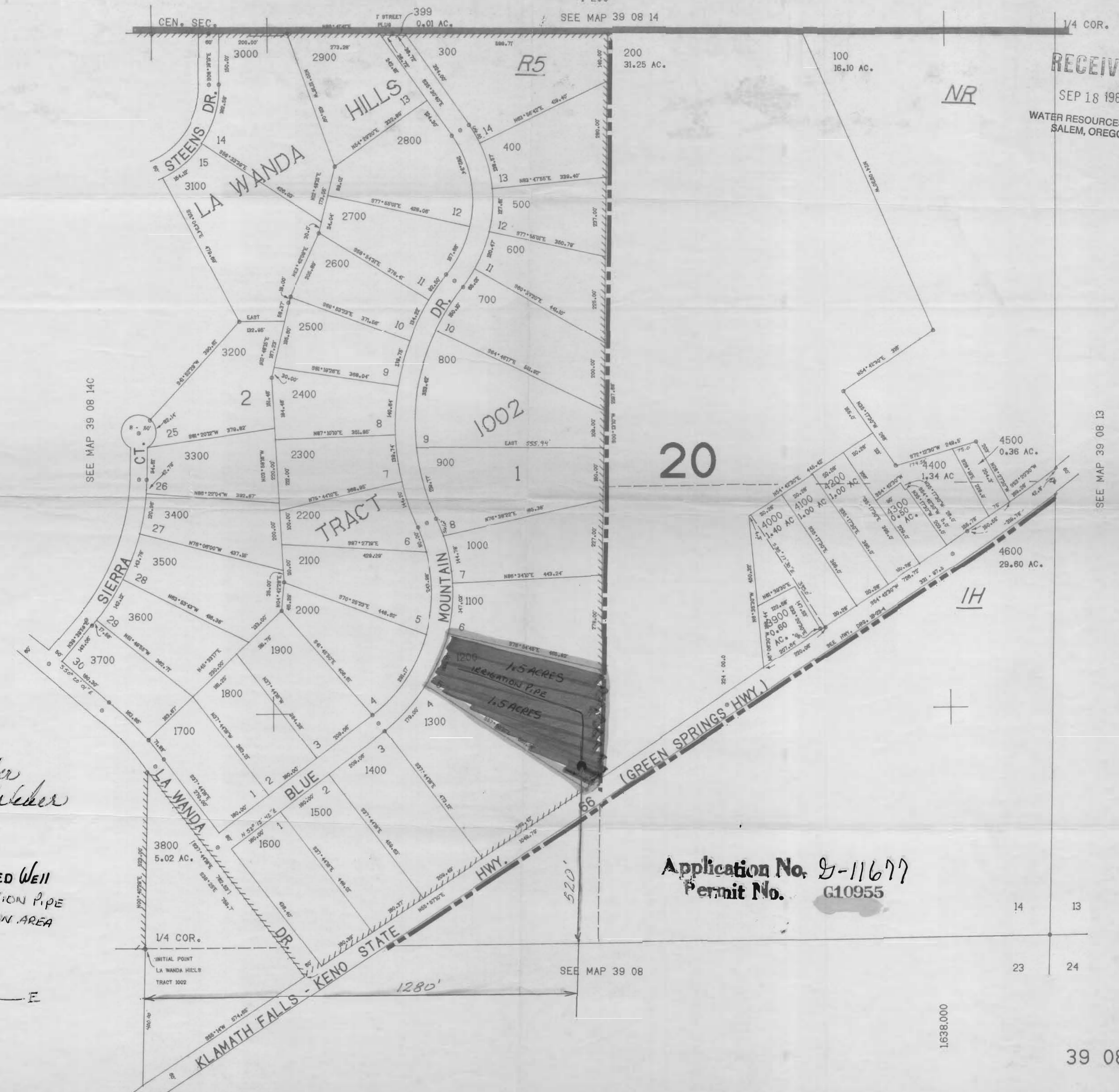
1"=200'

SEE MAP 39 08 14

RECEIVED

SEP 18 1987

WATER RESOURCES DEPT.
SALEM, OREGON



SEE MAP 39 08 14C

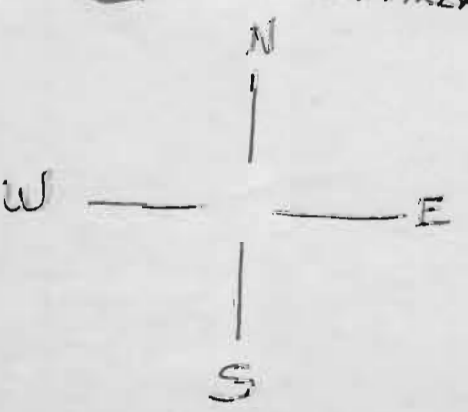
SEE MAP 39 08 13

20

187,000

William J. Weber
Imo Joe Weber

- - PROPOSED WELL
- IRRIGATION PIPE
- IRRIGATION AREA



Application No. G-11677
Permit No. G10955

SEE MAP 39 08

1:638,000

39 08 14D