

RECEIVED

BOOK 20

NE1/4 SEC 4 T.39S. R.8W. W.M.

39 8 4-1

JOSEPHINE COUNTY

Application No. D-11688

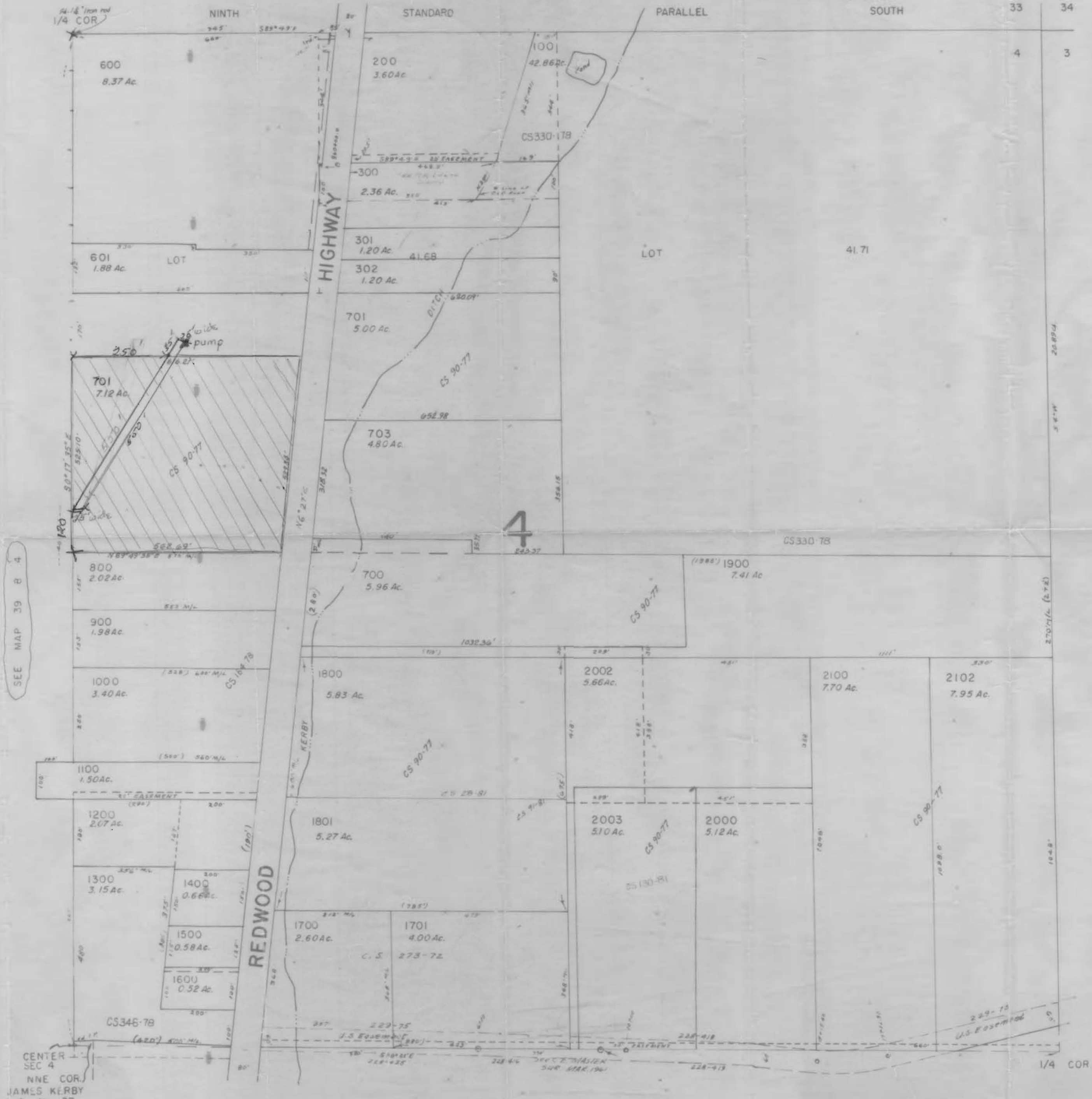
Permit No. D-11034

AUG 12 1987

1" = 200'

SEE MAP 38 8 33

WATER RESOURCES DEPT
SALEM, OREGON



CANCELLED T.L.
 400
 500
 2090
 2101
 2001
 1590
 1390
 1901

Tax Lot 701

SEE MAP 39 8 4

SEE MAP 38 8 33

CENTER
 SEC 4
 NNE COR.
 JAMES KERBY
 ILC No 37

SEE MAP 39 8 4-4

39 8 4-1

RECEIVED

BOOK 20

SECTION 4 T.39S. R.8W. W.M.

JOSEPHINE COUNTY

1"=400'

Application No. Y-11688

Permit No. 2-11034

39 8 4

& INDEX

AUG 12 1987

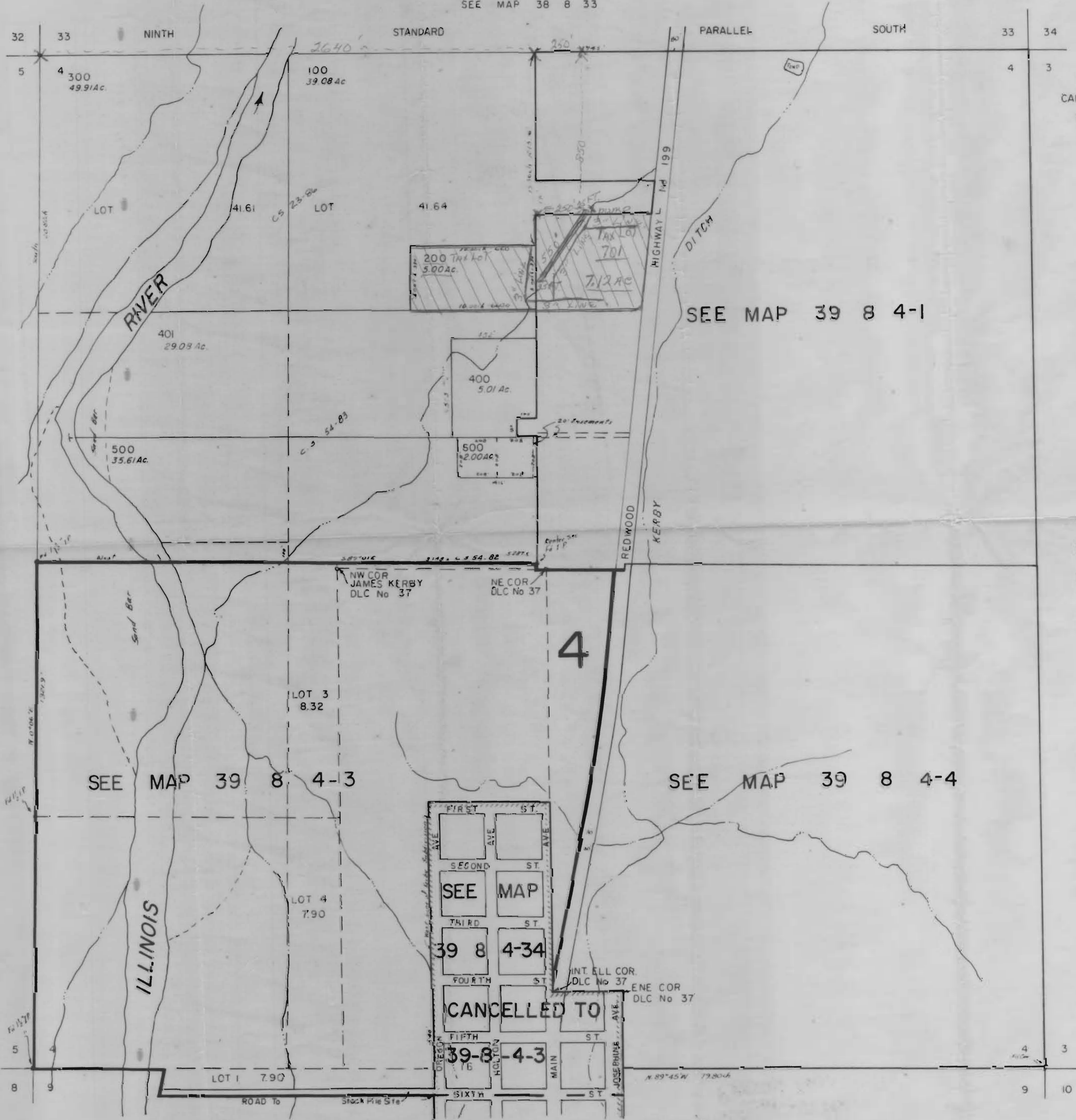
WATER RESOURCES DEPT.
SALEM, OREGON

RECEIVED

JAN 27 1988

WATER RESOURCES DEPT.
SALEM, OREGON

SEE MAP 38 8 33



CANCELLED T.E.
1201

SEE MAP 39 8 4-1

SEE MAP 39 8 5

SEE MAP 39 8

SEE MAP 39 8 4-3

SEE MAP 39 8 4-4

FIRST ST
SECOND ST
THIRD ST
FOURTH ST
FIFTH ST
SIXTH ST
HOLTON ST
MAIN ST
JOSEPHINE AVE

CANCELLED TO

SEE MAP 39 8 9B

SEE MAP 39 8 9AB

SEE MAP 39 8 9A

39 8 4