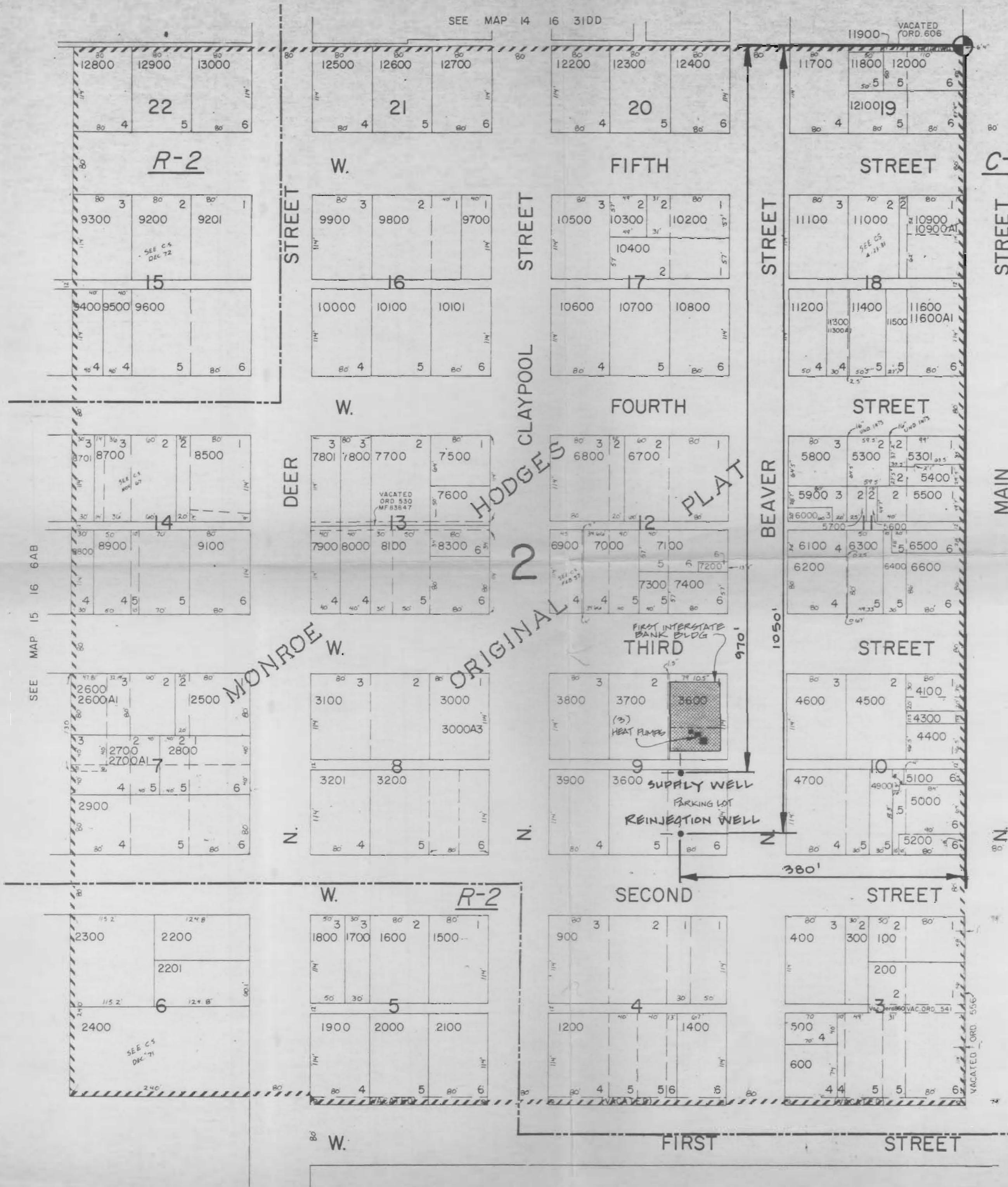


NE1/4 NE1/4 SEC. 6 T.15S. R.16E.W.M.
CROOK COUNTY
1" = 100'

15 16 6 AA
PRINEVILLE



- CANCELLED NO'S
- 4001
 - 4200
 - 4800
 - 5000A1
 - 8200
 - 8400
 - 8600
 - 9000
 - 700
 - 800
 - 3300
 - 3400
 - 3500
 - 4000
 - 6301
 - 1100
 - 1000
 - 1300
 - 5001

SEE MAP 15 16 5BB

FINAL PROOF
MAP



1. MAP ONLY FOR WATER RIGHTS ONLY.
2. MAP ACCURACY WITHIN 10'

Application No. D-11689
Permit No. G11080

RECEIVED
JUL 18 1990
WATER RESOURCES DEPT.
SALEM, OREGON

15 16 6 AA
PRINEVILLE