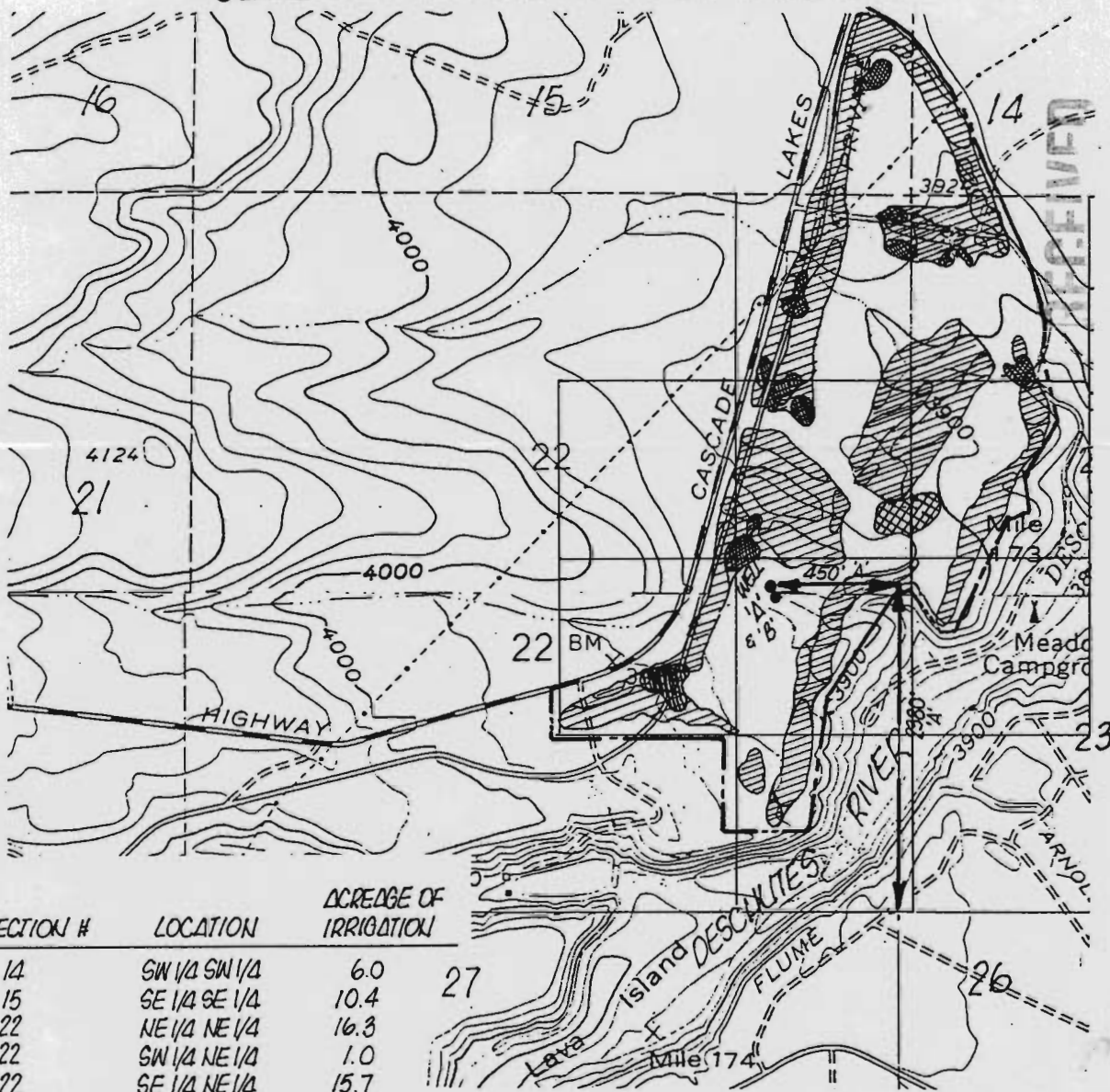





**SEVENTH MOUNTAIN GOLF VILLAGE**



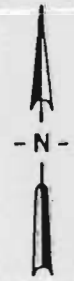
JUL 23 1990

WATER RESOURCES DEPT.  
 SALEM, OREGON

SECTION #	LOCATION	ΔCREDGE OF IRRIGATION
14	SW 1/4 SW 1/4	6.0
15	SE 1/4 SE 1/4	10.4
22	NE 1/4 NE 1/4	16.3
22	SW 1/4 NE 1/4	1.0
22	SE 1/4 NE 1/4	15.7
22	NW 1/4 SE 1/4	14.1
22	NE 1/4 SE 1/4	30.1
22	SE 1/4 SE 1/4	4.7
23	NW 1/4 NW 1/4	15.6
23	SW 1/4 NW 1/4	13.8
23	NW 1/2 SW 1/4	3.2
TOTAL		130.9

GOLF COURSE POND   
 LAND TO BE IRRIGATED   
 COMMERCIAL USE 

SCALE:  
 1" = 1320'  
 1.25 = 90'



**TOWNSHIP 18 S., R. 11 E., SECTION 22  
 DESCULITES COUNTY, OREGON**

'B' - NE 1/4 SE 1/4, SECTION 22, T 18 S, R 11 E, W.M.; 2390 FEET NORTH AND 458 FEET WEST FROM SE CORNER, SECTION 22

Certified Water Right Examiner  
 #039  
*Eugene P. DiLoreto*  
 EUGENE P. DILORETO  
 NOV. 19, 1987  
 STATE OF OREGON

*Eugene P. DiLoreto*  
 EUGENE DILORETO, CERTIFIED WATER RIGHTS EXAMINER #39