

APPLICATION TO APPROPRIATE
GROUND WATER FOR QUASI-MUNICIPAL USE

IN SECTIONS 1,2,11,12, T18S, R11E, WM
DESCHUTES COUNTY, OREGON

1/2 *9-12033*

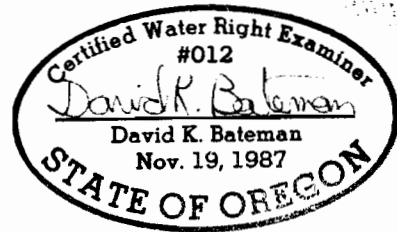
Part 2, Pa. G11091

LEGEND:

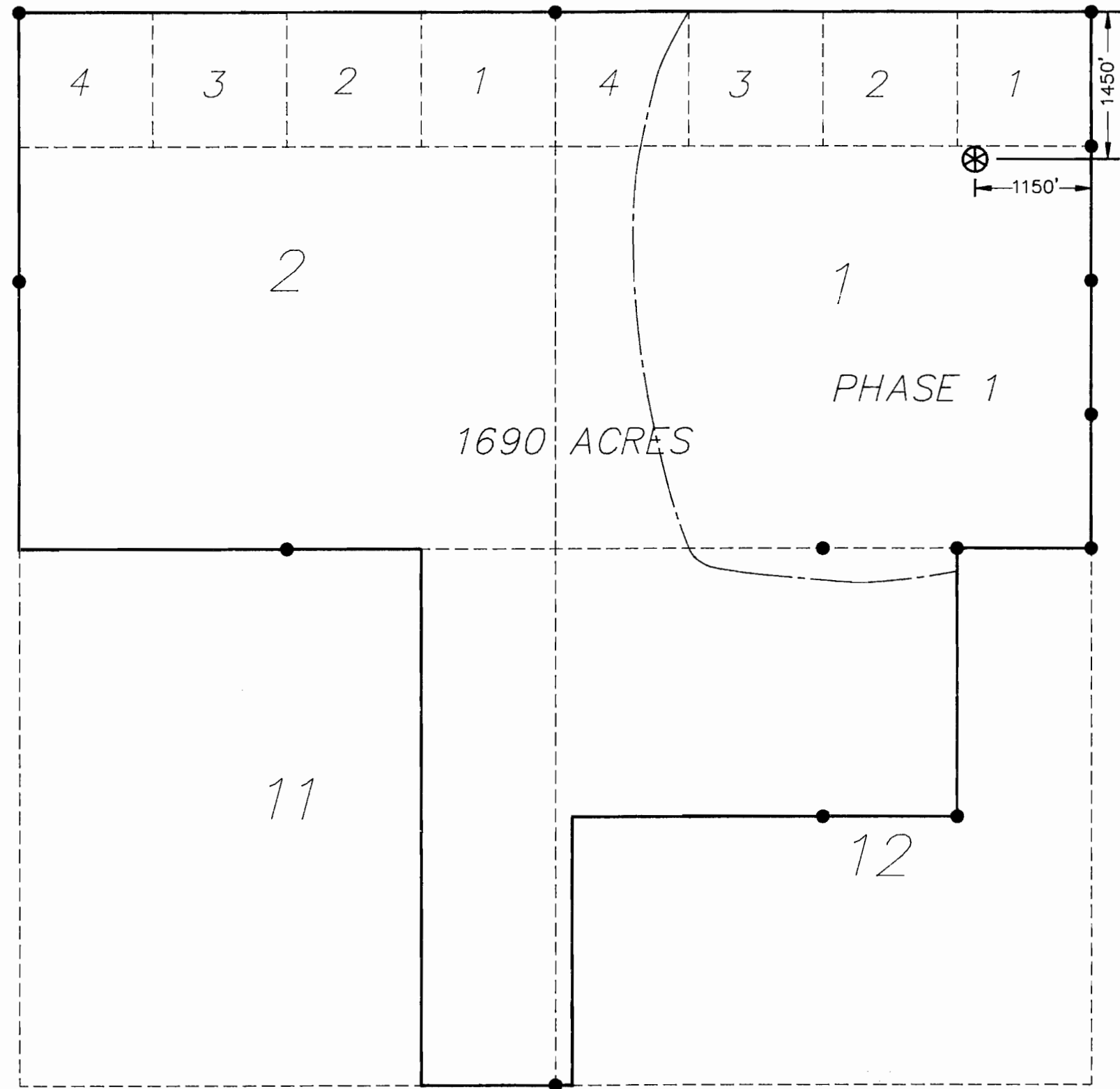
- QUASI-MUNICIPAL SERVICE BOUNDARY
- - - PHASE 1 BOUNDARY
- ⊗ PROPOSED WELL LOCATION
- FOUND MONUMENT



SCALE: 1" = 1320'



This map is for the purpose of locating a water right and is not intended to provide legal dimensions for property boundaries.



scale 1"=1320' design DKB
date 2/13/90 drawn JDP
file CHD009

DEA
DAVID EVANS AND ASSOCIATES, INC
709 NW WALL STREET, SUITE 102
BEND, OREGON 97701 (503)389-7614

APPLICATION MAP FOR
CASCADE HIGHLANDS, INC.