

# FINAL PROOF SURVEY CASCADE MEADOW RANCH

Application no. G-11775

Permit no. G-11117

17 OCTOBER 1993

PROPERTY IS SITUATED IN SECTIONS 29 AND 30, T14S, R10E, W. M.,  
DESCHUTES COUNTY, OREGON

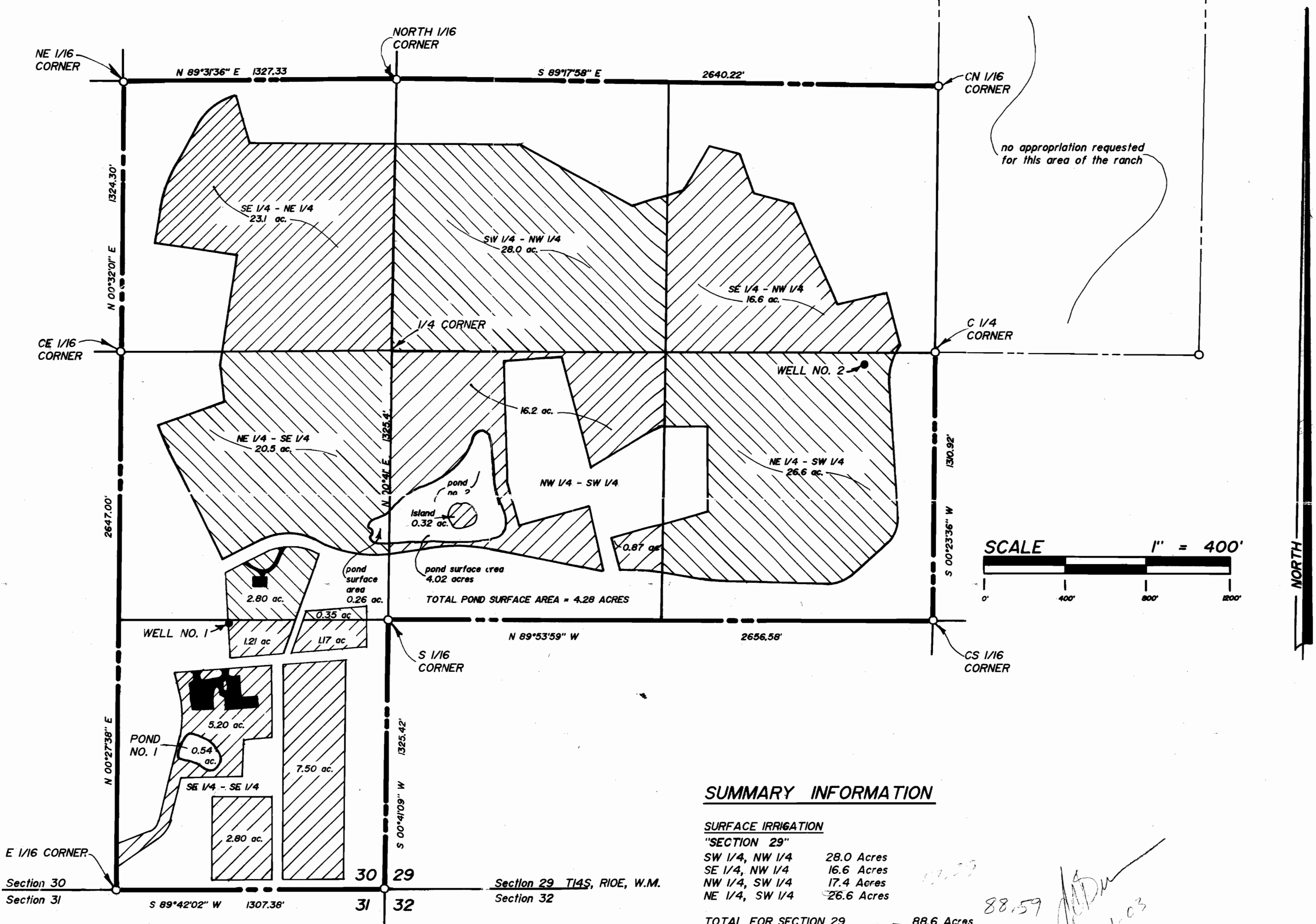
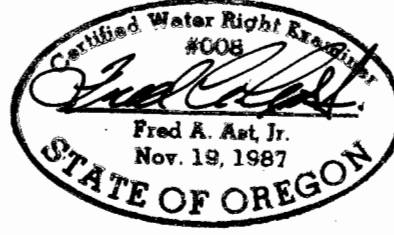
### USE OF WATER

1. IRRIGATION
2. MAINTENANCE OF TWO PONDS FOR AESTHETIC PURPOSES

SOURCE: TWO WELLS

DISTRIBUTION: UNDERGROUND PIPELINE SYSTEM

NOTE: THIS MAP IS FOR THE PURPOSE OF IDENTIFYING THE LOCATION OF WATER RIGHT. IT IS NOT INTENDED TO PROVIDE INFORMATION RELATIVE TO THE LOCATION OF PROPERTY OWNERSHIP BOUNDARY LINES.



### SUMMARY INFORMATION

#### SURFACE IRRIGATION

"SECTION 29"	
SW 1/4, NW 1/4	28.0 Acres
SE 1/4, NW 1/4	16.6 Acres
NW 1/4, SW 1/4	17.4 Acres
NE 1/4, SW 1/4	26.6 Acres
<b>TOTAL FOR SECTION 29</b>	<b>88.6 Acres</b>

"SECTION 30"	
SE 1/4, NE 1/4	23.1 Acres
NE 1/4, SE 1/4	23.65 Acres
SE 1/4, SE 1/4	17.88 Acres
<b>TOTAL FOR SECTION 30</b>	<b>64.6 Acres</b>

COMBINED TOTAL 153.2 ACRES

#### POND INFORMATION

"POND NO. 1" IS SITUATED IN THE SE 1/4 OF THE SE 1/4 OF SECTION 30, T14S, R10E, W.M.  
SURFACE AREA = 0.54 Acres.  
STORAGE CAPACITY = 2.3 Acre Ft.  
WATER IS SUPPLIED TO THIS POND VIA AN UNDERGROUND PIPELINE.  
WATER SOURCE: "WELL NO. 1"

"POND NO. 2" IS SITUATED IN THE NE 1/4 OF THE SE 1/4 OF SECTION 30, AND THE NW 1/4 OF THE SW 1/4 SECTION 29, T14S, R10E, W.M., DESCHUTES COUNTY OREGON.  
TOTAL SURFACE AREA = 4.28 Acres  
STORAGE CAPACITY = 30.8 Acre Ft.  
WATER IS SUPPLIED TO THIS POND VIA AN UNDERGROUND PIPELINE.  
WATER SOURCE: "WELL NO. 1"

88.59  
12-1-03

### WELL LOCATIONS

"Well No. 1" is situated in the SE 1/4 of the SE 1/4 of Section 30, T14S, R10E, W.M., and bears South, 1338 ft. and West, 791 ft. from the East Quarter Corner of Section 30

"Well No. 2" is situated in the NE 1/4 of the SW 1/4 of Section 29, T14S, R10E, W.M., and bears South, 76 ft. and East, 2302 ft. from the West Quarter Corner of Section 29

FRED A. AST, Jr. & ASSOCIATES  
351 W. Cascade St. - P. O. BOX 751  
SISTERS, OREGON 97759  
PHONE: (503) 549-7851

APR 13 1988

WATER RESOURCES DEPT.  
SALEM, OREGON

# CASCADE MEADOW RANCH

APPLICATION NO. G-11775  
Appropriation of Ground Water

Application No. G-11775  
Permit No. G11117

\*\*\* REVISED MAP \*\*\* 11 APRIL 1988

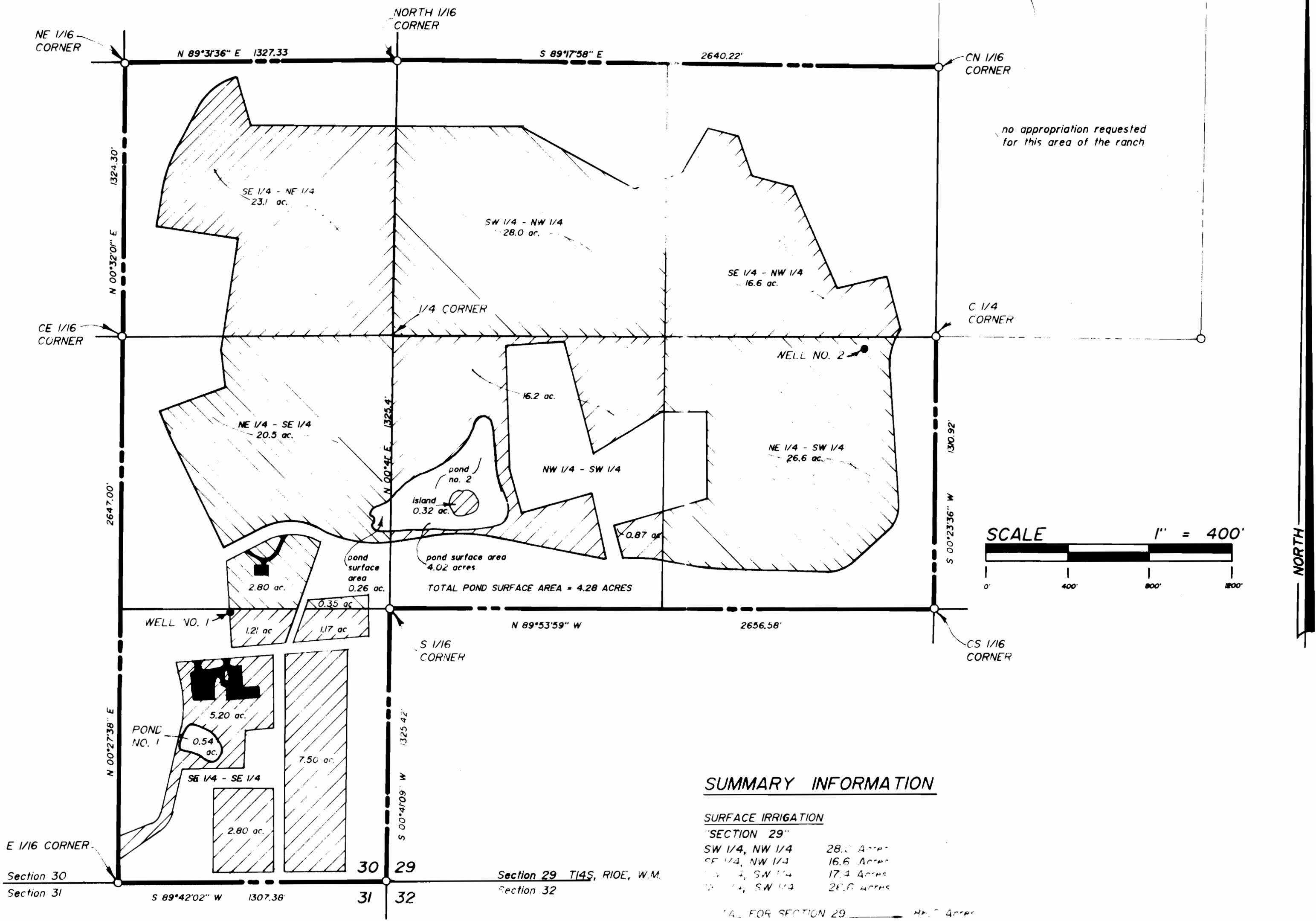
PROPERTY IS SITUATED IN SECTIONS 29 AND 30, T14S, R10E, W. M.,  
DESCHUTES COUNTY, OREGON

### USE OF WATER

- IRRIGATION
- MAINTENANCE OF TWO PONDS FOR AESTHETIC PURPOSES

SOURCE: TWO WELLS  
DISTRIBUTION: UNDERGROUND PIPELINE SYSTEM

*Fred Ast, Jr.*



### SUMMARY INFORMATION

SURFACE IRRIGATION	
<b>SECTION 29</b>	
SW 1/4, NW 1/4	28.0 Acres
SE 1/4, NW 1/4	16.6 Acres
NW 1/4, SW 1/4	17.4 Acres
NE 1/4, SW 1/4	26.6 Acres
<b>TOTAL FOR SECTION 29</b>	<b>88.6 Acres</b>
<b>SECTION 30</b>	
SE 1/4, NE 1/4	23.1 Acres
NE 1/4, SE 1/4	23.6 Acres
NE 1/4, NW 1/4	17.8 Acres
<b>TOTAL FOR SECTION 30</b>	<b>64.5 Acres</b>
<b>COMBINED TOTAL</b>	<b>153.2 ACRES</b>

### POND INFORMATION

- POND NO. 1 IS SITUATED IN THE SE 1/4 OF THE SE 1/4 OF SECTION 30, T14S, R10E, W.M.  
SURFACE AREA = 0.54 Acres.  
STORAGE CAPACITY = 2.3 Acre Ft.  
WATER IS SUPPLIED TO THIS POND VIA AN UNDERGROUND PIPELINE.  
WATER SOURCE: "WELL NO. 1"
- POND NO. 2 IS SITUATED IN THE NE 1/4 OF THE SE 1/4 OF SECTION 30, AND THE NW 1/4 OF THE SW 1/4 SECTION 29, T14S, R10E, W.M., DESCHUTES COUNTY OREGON.  
TOTAL SURFACE AREA = 4.28 Acres  
STORAGE CAPACITY = 30.8 Acre Ft.  
WATER IS SUPPLIED TO THIS POND VIA AN UNDERGROUND PIPELINE.  
WATER SOURCE: "WELL NO. 1"

### WELL LOCATIONS

"Well No. 1" is situated in the SE 1/4 of the SE 1/4 of Section 30, T14S, R10E, W.M., and bears South, 1338 ft. and West, 791 ft. from the East Quarter Corner of Section 30

"Well No. 2" is situated in the NE 1/4 of the SW 1/4 of Section 29, T14S, R10E, W.M., and bears South, 76 ft. and East, 2302 ft. from the West Quarter Corner of Section 29

FRED A. AST, Jr. & ASSOCIATES  
351 W. Cascade St. - P. O. BOX 751  
SISTERS, OREGON ----- 97759  
PHONE : ( 503 ) 549-7851

RECEIVED

APR 14 1988

WATER RESOURCES DEPT.  
SALEM, OREGON

# CASCADE MEADOW RANCH

APPLICATION NO. G-11775  
Appropriation of Ground Water

Application No. G-11775  
Permit No. G11117

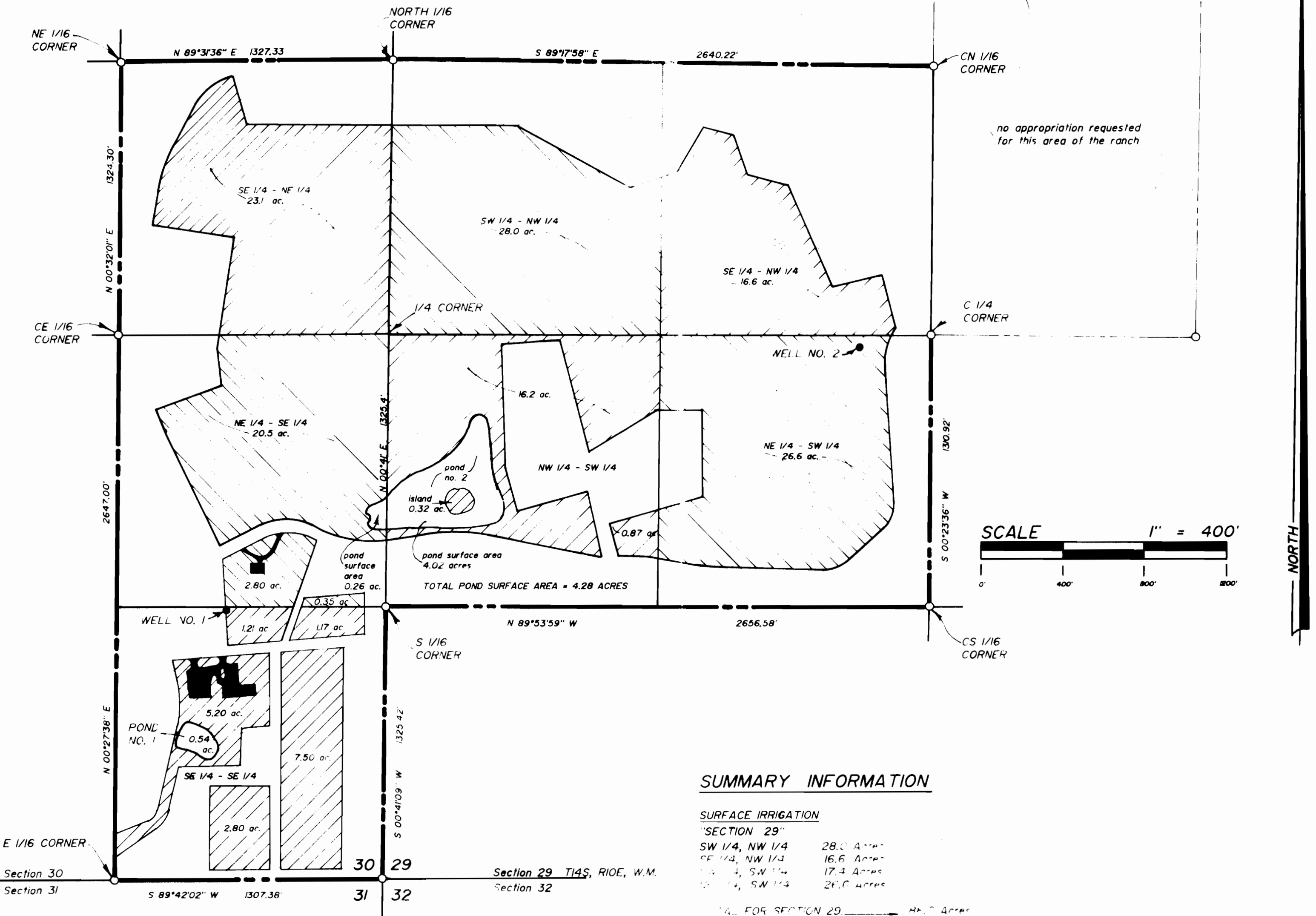
\*\*\* REVISED MAP \*\*\* 11 APRIL 1988

PROPERTY IS SITUATED IN SECTIONS 29 AND 30, T14S, R10E, W. M.,  
DESCHUTES COUNTY, OREGON

### USE OF WATER

1. IRRIGATION
2. MAINTENANCE OF TWO PONDS FOR AESTHETIC PURPOSES

SOURCE: TWO WELLS  
DISTRIBUTION: UNDERGROUND PIPELINE SYSTEM



### SUMMARY INFORMATION

#### SURFACE IRRIGATION

##### "SECTION 29"

SW 1/4, NW 1/4	28.0 Acres
SE 1/4, NW 1/4	16.6 Acres
NE 1/4, SW 1/4	17.4 Acres
SE 1/4, SW 1/4	26.6 Acres

TOTAL FOR SECTION 29 ----- 88.6 Acres

##### "SECTION 30"

NE 1/4, NE 1/4	23.1 Acres
NE 1/4, SE 1/4	23.6 Acres
SE 1/4, SE 1/4	17.86 Acres

TOTAL FOR SECTION 30 ----- 64.6 Acres

COMBINED TOTAL ----- 153.2 ACRES

#### POND INFORMATION

POND NO. 1 IS SITUATED IN THE SE 1/4 OF THE SE 1/4 OF SECTION 30, T14S, R10E, W.M.  
SURFACE AREA = 0.54 Acres.  
STORAGE CAPACITY = 2.3 Acre Ft.  
WATER IS SUPPLIED TO THIS POND VIA AN UNDERGROUND PIPELINE.  
WATER SOURCE: "WELL NO. 1"

POND NO. 2 IS SITUATED IN THE NE 1/4 OF THE SE 1/4 OF SECTION 30, AND THE NW 1/4 OF THE  
SW 1/4 SECTION 29, T14S, R10E, W.M., DESCHUTES COUNTY OREGON.  
TOTAL SURFACE AREA = 4.28 Acres  
STORAGE CAPACITY = 30.8 Acre Ft.  
WATER IS SUPPLIED TO THIS POND VIA AN UNDERGROUND PIPELINE.  
WATER SOURCE: "WELL NO. 2"

### WELL LOCATIONS

"Well No. 1" is situated in the SE 1/4 of the SE 1/4 of  
Section 30, T14S, R10E, W.M., and bears South, 1338 ft.  
and West, 791 ft. from the East Quarter Corner of Section 30

"Well No. 2" is situated in the NE 1/4 of the SW 1/4 of  
Section 29, T14S, R10E, W.M., and bears South, 76 ft.  
and East, 2302 ft. from the West Quarter Corner of Section 29

FRED A. AST, Jr. & ASSOCIATES  
351 W. Cascade St. - P. O. BOX 751  
SISTERS, OREGON ----- 97759  
PHONE : ( 503 ) 549-7851



