

T.8 S. R.2 W., W.M.

RECEIVED

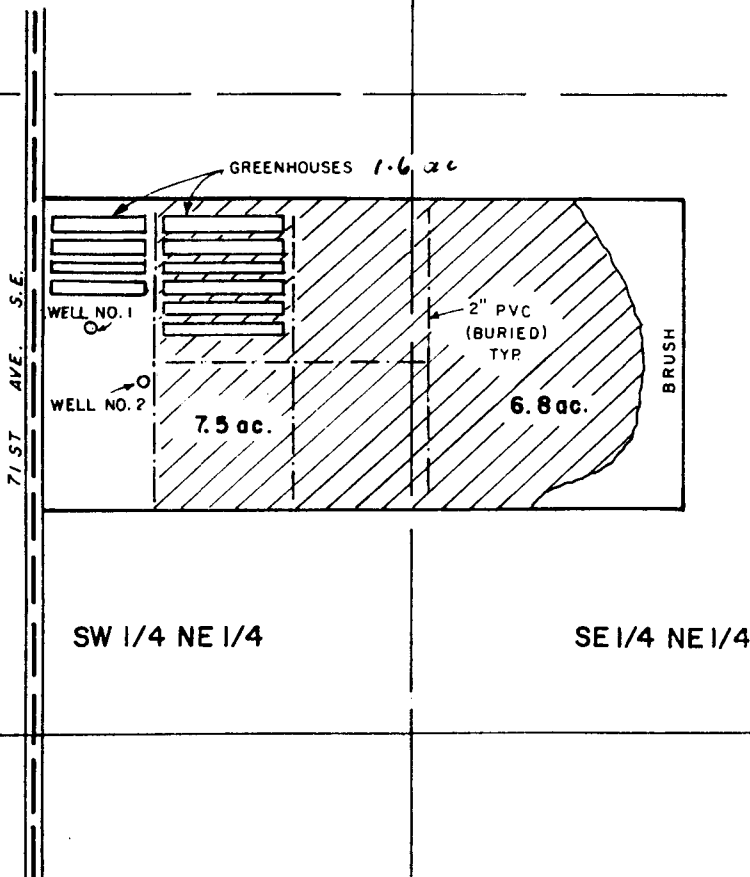
JUL 17 1990

WATER RESOURCES DEPT.
SALEM, OREGON

Application No. *D-12179*
Permit No. *G11144*



1" = 400'



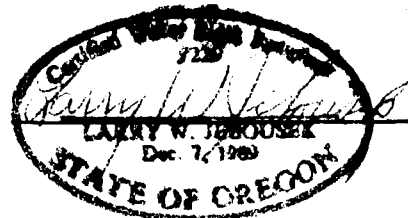
A. OLINGER
D.L.C. NO. 57

WATER RIGHT MAP FOR

MARK KRAUTMANN

SURVEYED ON JULY 3, 1990

BY:



S.E. Cor. 2W9

WELL NO. 1 LOC. 2460' N.B 120' E. FROM A. OLINGER DLC 57
WELL NO. 2 LOC. 2360' N.B 260' E. FROM A. OLINGER DLC 57