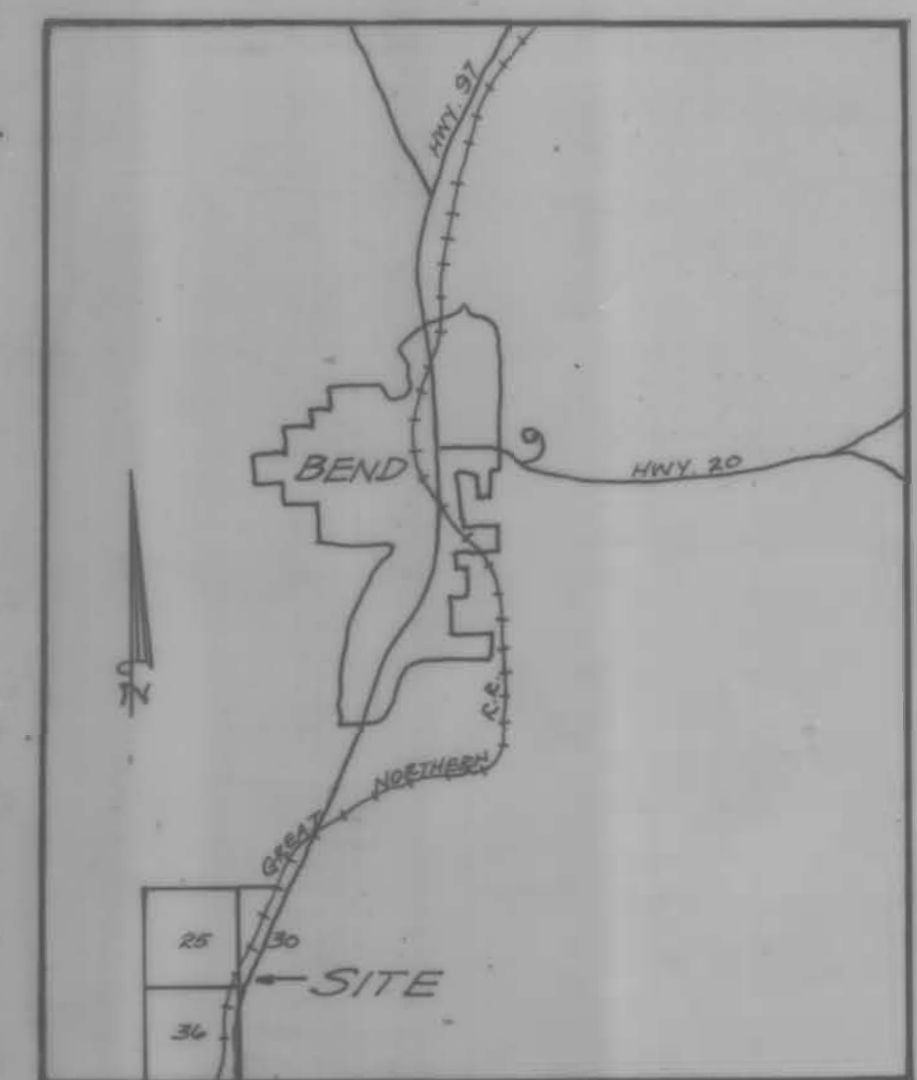


DESCHUTES RIVER WOODS

Application No. B-12262
Permit No. B-11182

WELL #1: 1800 FT. E. AND 70 FT. S. FROM NW 1/4 CORNER OF SW 1/4 SECTION 25 (T18S, R11E).
WELL #2: 1800 FT. E. AND 110 FT. S. FROM NW 1/4 CORNER OF SW 1/4 SECTION 25 (T18S, R11E).
WELL #3: 130 FT. E. AND 1110 FT. S. FROM NE 1/4 CORNER OF NW 1/4 SECTION 36 (T18S, R11E).

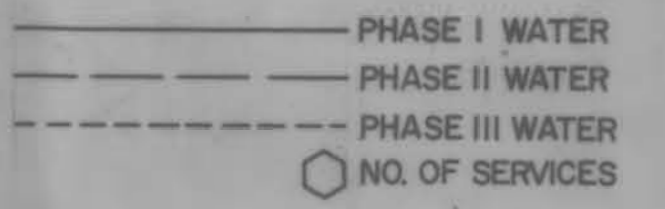
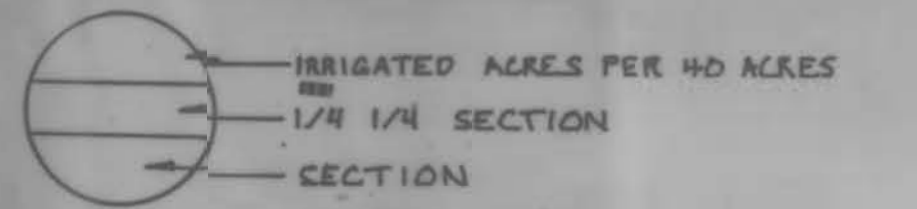


VICINITY MAP
Scale: 1/2" = 1 mile

TOTAL IRRIGATED ACRES = 93 ACRES

SOURCE OF SUPPLY
Well No. 1 160 G.P.M. (Presently 40 G.P.M.)
Well No. 2 160 G.P.M. (Presently 90 G.P.M.)
Well No. 3 180 G.P.M.

STORAGE CAPACITY
Reservoir No. 1 30,000 Gallons
Reservoir No. 2 30,000 Gallons



RECEIVED
OCT 11 1990
WATER RESOURCES DEPT.
SALM, OREGON

Certified Water Right Survey
191
William R. Tye
May 17, 1988
STATE OF OREGON

TYE ENGINEERING, INC.

FRED SCHILLING / DUANE KATTER
22165 BEAR CREEK ROAD
BEND, OREGON 97701

APACHE WATER SYSTEM
MASTER PLAN

drafting	no.	date	revisions	sh.
EW	2	8-10-83	NETWORKS ANALYSIS	
WRT		10-2-90	WATER RIGHTS PERMIT INFORMATION	
scale 1" = 400'				
date SEPT. 1980				
w. o. no. 79911				