

FINAL PROOF SURVEY MAP
IN THE NAME OF OREMET - ALLVAC
AUGUST 16, 2004

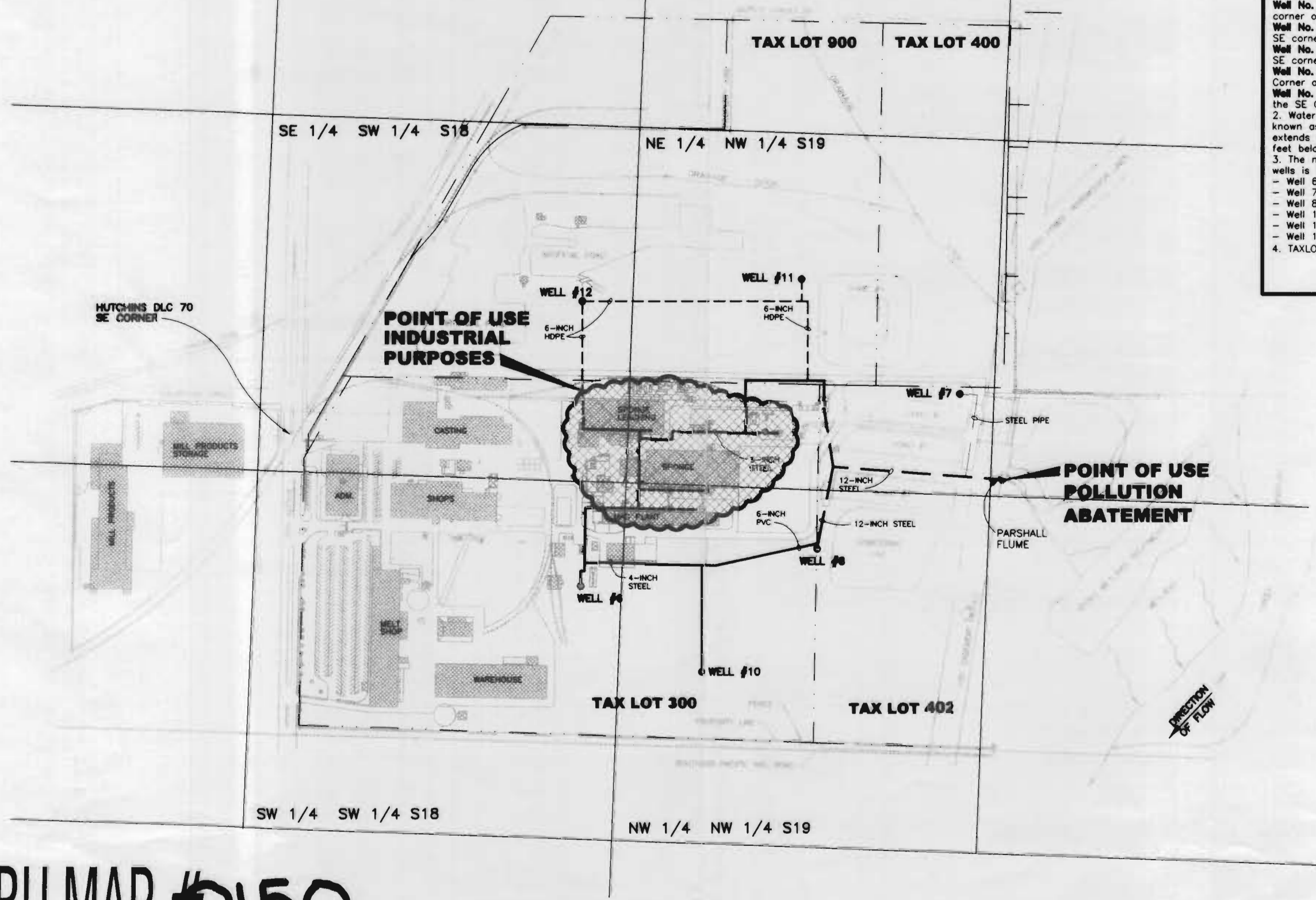


LEGEND

- TAX LOT BOUNDARIES
- - - - 6-INCH STEEL PIPE
- ==== 12-INCH STEEL PIPE
- ===== STEEL PIPE

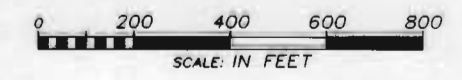
Notes:

- Points of appropriation are at the following locations:
Well No. 6 - 1060 feet South and 730 feet West from the SE corner of Hutchins DLC 70.
Well No. 7 - 2440 feet South and 25 feet West from the SE corner of Hutchins DLC 70.
Well No. 8 - 1940 feet South and 580 feet West from the SE corner of Hutchins DLC 70.
Well No. 10 - 1525 feet South and 1040 feet West from the SE corner of Hutchins DLC 70.
Well No. 11 - 1875 South and 403 feet East from the SE Corner of Hutchins DLC 70.
Well No. 12 - 1025 feet South and 172 feet East from the SE Corner of Hutchins DLC 70.
- Water supply wells are screened in a confined aquifer known as the WBZ-C Aquifer which extends from a depth of approximately 110 feet to 150 feet below ground surface.
- The maximum capacity observed for each water supply wells is below:
 - Well 6 = 146 GPM
 - Well 7 = 210 GPM
 - Well 8 = 340 GPM
 - Well 10 = 61 GPM
 - Well 11 = 234 GPM
 - Well 12 = 120 GPM
- TAXLOTS: #300, 400, 402, 900



TOWNSHIP: 11 SOUTH
 RANGE: 3 WEST W.M.
 APPLICATION NO. G-12277
 PERMIT NO. G-11308

THE PURPOSE OF THIS MAP IS TO IDENTIFY A WATER RIGHT. IT IS NOT INTENDED TO PROVIDE LEGAL DIMENSIONS OR THE LOCATION OF PROPERTY LINES.



Expires 12/31/04

FINAL PROOF MAP
 FOR PERMIT #G11308
 530 34TH S.W., ALBANY, OR 97321

COBU MAP #0150

