

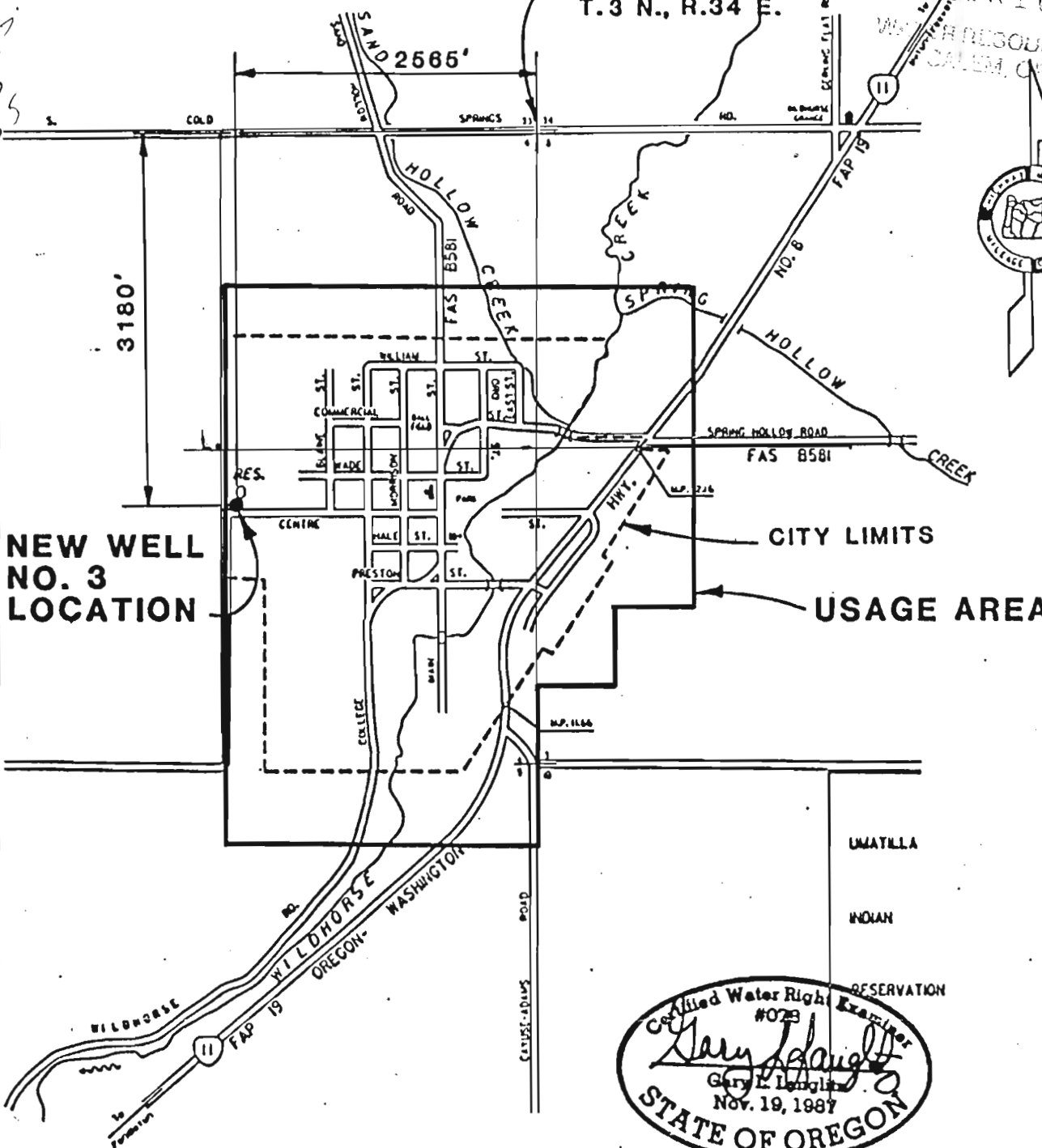
Permit No. G11348

N.E. CORNER SEC. 4,  
T.3 N., R.34 E.

APR 10 1987

WATER RESOURCES DEPT  
SALEM, OREGON

RAM  
200  
400  
350



NEW WELL  
NO. 3  
LOCATION

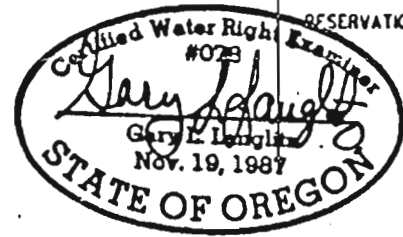
CITY LIMITS

USAGE AREA

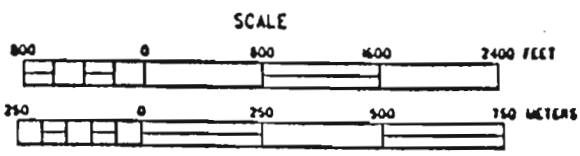
UMATILLA

INDIAN

RESERVATION



9-26-89



ADAMS

UMATILLA COUNTY, OREGON

POPULATION 235



CITY OF  
ADAMS, OREGON

WELL NO. 3

FIGURE

1