

Application No. G-12460  
Permit No. G-11400

DEC - 9 1991

(N00°24'29"W 2648.30)

PARCELS REFER TO  
PARTITION NO. 1991-54  
FILED 8/91, DESCH. CO., OR.

PARCEL 3  
81.02 ACRES  
T.L. 5901

SEC. 26  
NW 1/4 SW 1/4 = 18<sup>±</sup> AC.  
SW 1/4 SW 1/4 = 18<sup>±</sup> "  
IN ALL, 36<sup>±</sup> AC.

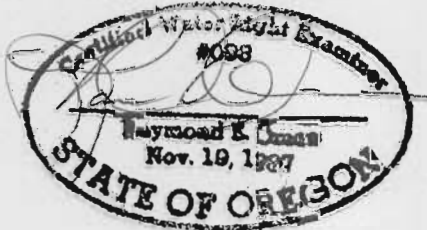
SEC. 27  
NE 1/4 SE 1/4 = 4<sup>±</sup> AC.  
SE 1/4 SE 1/4 = 14<sup>±</sup> "  
IN ALL, 19<sup>±</sup> AC.

NE 1/4 NE 1/4 / 34 = 20<sup>±</sup> "  
NW 1/4 NW 1/4 / 35 = 24<sup>±</sup> "  
TOTAL, 100<sup>±</sup> AC.  
(N89°52'33"W 1331.14)  
N89°51'37"W 1330.94

LANDS of STEPHEN C. & PATRICIA D. JAQUA  
D.V. 161, P. 1597, DESCHUTES CO., OREGON  
ON-LAND, 100<sup>±</sup> ACRES FROM ON-SITE  
WELL, SITUATE IN  
THE W 1/2 SW 1/4, SEC. 26,  
THE E 1/2 SE 1/4, SEC. 27,  
THE NE 1/4 NE 1/4, SEC. 34,  
THE NW 1/4 NW 1/4, SEC. 35,  
ALL IN T. 15 S., R. 11 E., W. M.

THIS PRELIMINARY MAP MADE BY:

RAYMOND E. OMAN  
60898 RIDGE DRIVE  
BEND, OR 97702  
1 OCT 1991



THIS PLAT IS MADE FOR WATER RIGHTS  
ESTABLISHMENT OR TRANSFER AND DOES  
NOT CONSTITUTE A BOUNDARY SURVEY  
PLAT UNDER O.R.S. 92, 94 OR 209.

SUBJECT TO REVIEW BY  
OREGON STATE  
WATER RESOURCES DEPT.

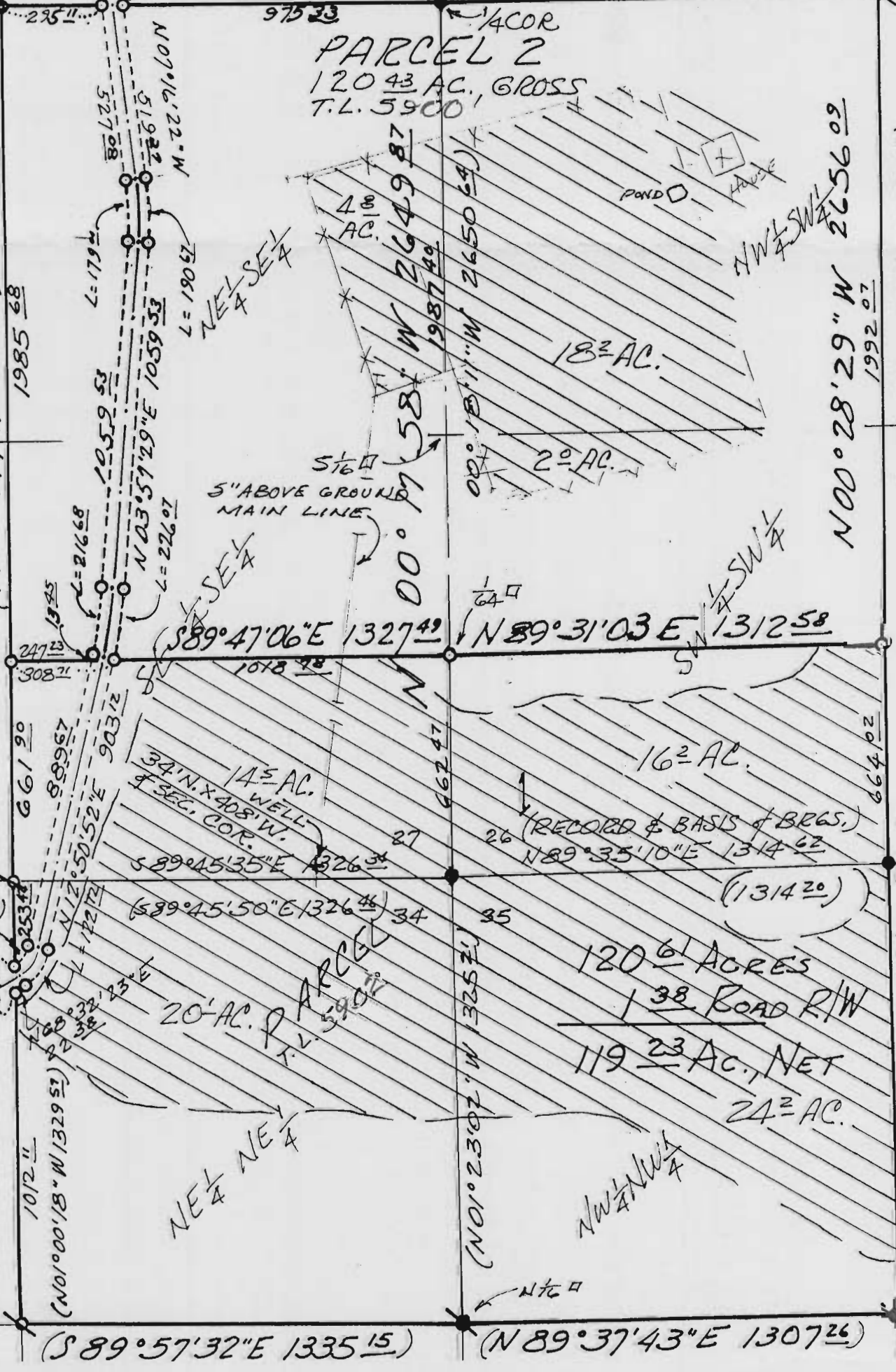
(S89°20'49"W 1306.52)

N89°18'46"E 1306.52

CW 1/6 □

PARCEL 2  
T.L. 15-11-5900  
NW 1/4 SW 1/4 / 26 = 18<sup>±</sup> AC.  
N 1/2 SW 1/4 SW 1/4 / 26 = 2<sup>±</sup> "  
NE 1/4 SE 1/4 / 27 = 4<sup>±</sup> "  
IN ALL, 25<sup>±</sup> AC.

N00°23'58"W 2647.58  
(N00°24'17"W 2648.02)



SCALE:  
1" = 400'

2/P