

Juvenile Home
Multnomah County

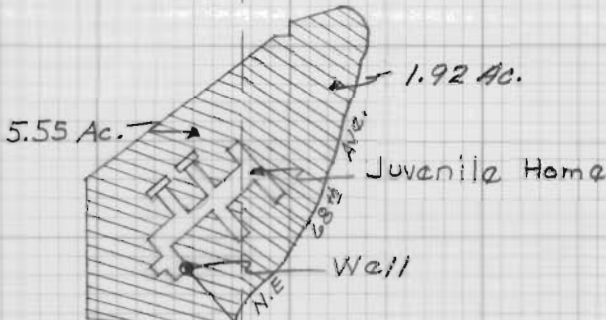


SCALE
1" = 600'

30 29 1N, 2E ↗ NE HALSEY ST.

1/4 Cor

31 32



NE. 62nd Ave.

NE. GLISAN ST.

Center Section 32
T-1-N-R-2-E W.M.

Application No. G-1276
Permit No. G-1161