

G-12790
PERMIT: G-11828

SEC. 10, T.4S, R.1E, W.M.

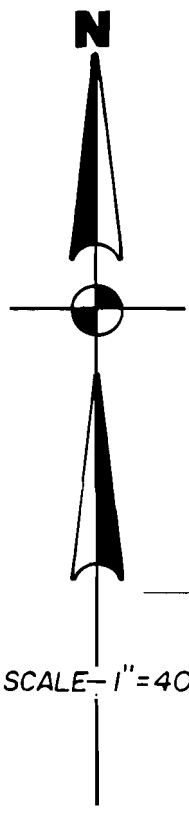
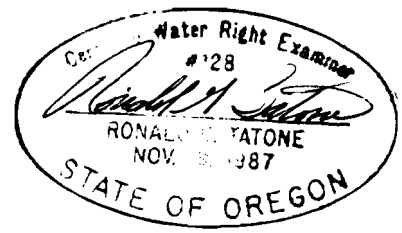
4 3
9 10

Supersedes 12/27/81

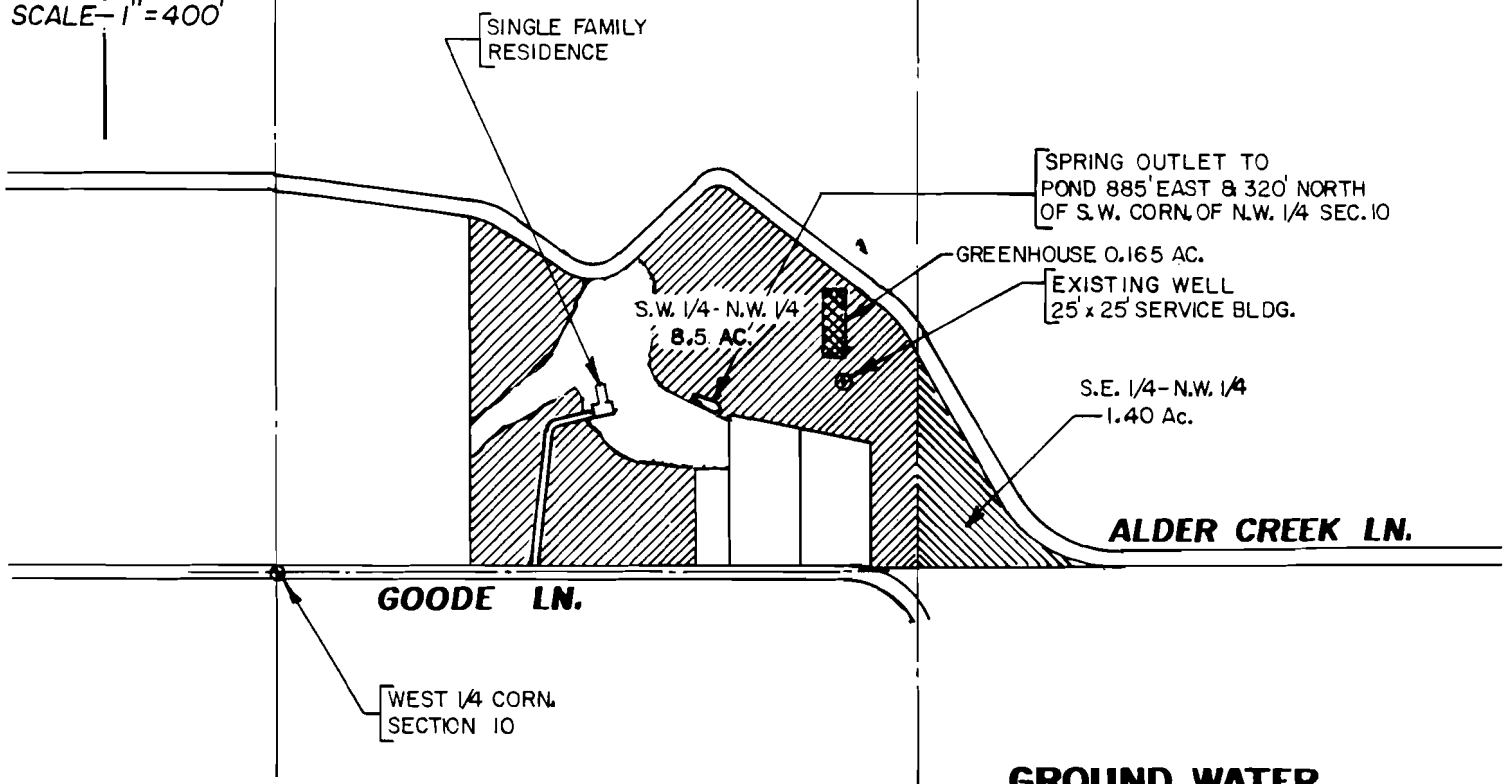
RECEIVED

AUG 09 1993

WATER RESOURCES DEPT
SALEM, OREGON

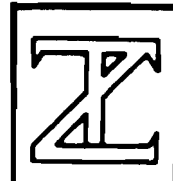


SCALE - 1" = 400'



GREENHOUSE = 0.165 ACRES

GROUND WATER APPLICATION MAP FOR LUDWIG JOHN



ZAROSINSKI - TATONE ENGINEERS, INC.

3737 S. E. 8TH AVENUE, PORTLAND, OREGON 97202

PHONE: (503) 235-8798