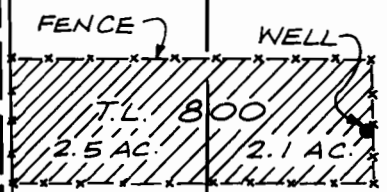


NE 1/4 SE 1/4 SECTION 9 &
 NW 1/4 SW 1/4 SECTION 10
 T. 1 S., R. 2 W., W. M.
 WASHINGTON COUNTY, OREGON

NW COR.
 CHARLES
 STEWART
 DLC # 56

NORTH LINE CHARLES STEWART DLC # 56
 SE ALEXANDER ST.

DISTANCES FROM
 NW COR. CHARLES
 STEWART DLC # 56
 TO WELL:
 980 FEET SOUTH
 765 FEET EAST



LEGEND

 INGROUND
 STOCK (4.6 AC.
 TOTAL)

NE 1/4 SE 1/4
 SECTION 9

NW 1/4 SW 1/4
 SECTION 10



SCALE:
 1" = 400'

WEST LINE CHARLES
 STEWART
 DLC # 56
 SW 247TH AVE.

SW DAVIS RD.

RECEIVED

FEB 21 1988
 WATER DIVISION
 SALEM OREGON



9	10
16	15

THIS MAP DOES NOT INTEND TO
 PROVIDE DIMENSIONS FOR THE
 EXACT LOCATION OF PROPERTY
 OR BOUNDARY LINES.

CHARLES E. SPEAR CWRE #187
 831 N.E. BIRCHAIRE LANE
 HILLSBORO, OREGON 97124

**FINAL PROOF MAP
 PERMIT 6-11944**

FOR
KLAAS ELLERBROOK JR.
 TO
 APPROPRIATE GROUND WATER
 FOR NURSERY OPERATIONS USE

June 24, 1995