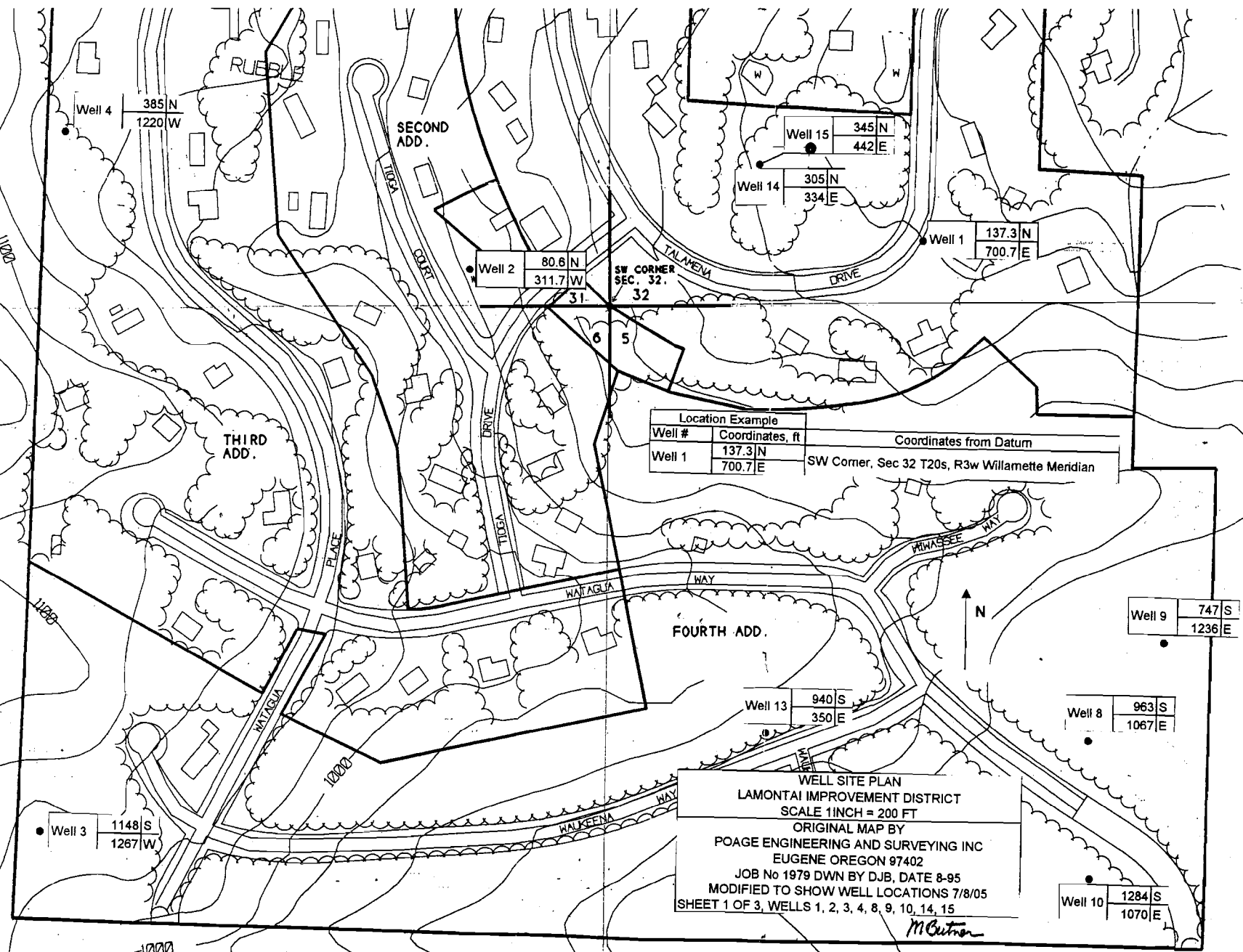


42,350 GAL
CONCRETE TANK
RESERVOIR

RECEIVED
JUL 25 2005
WATER RESOURCES DEPT
SALEM, OREGON

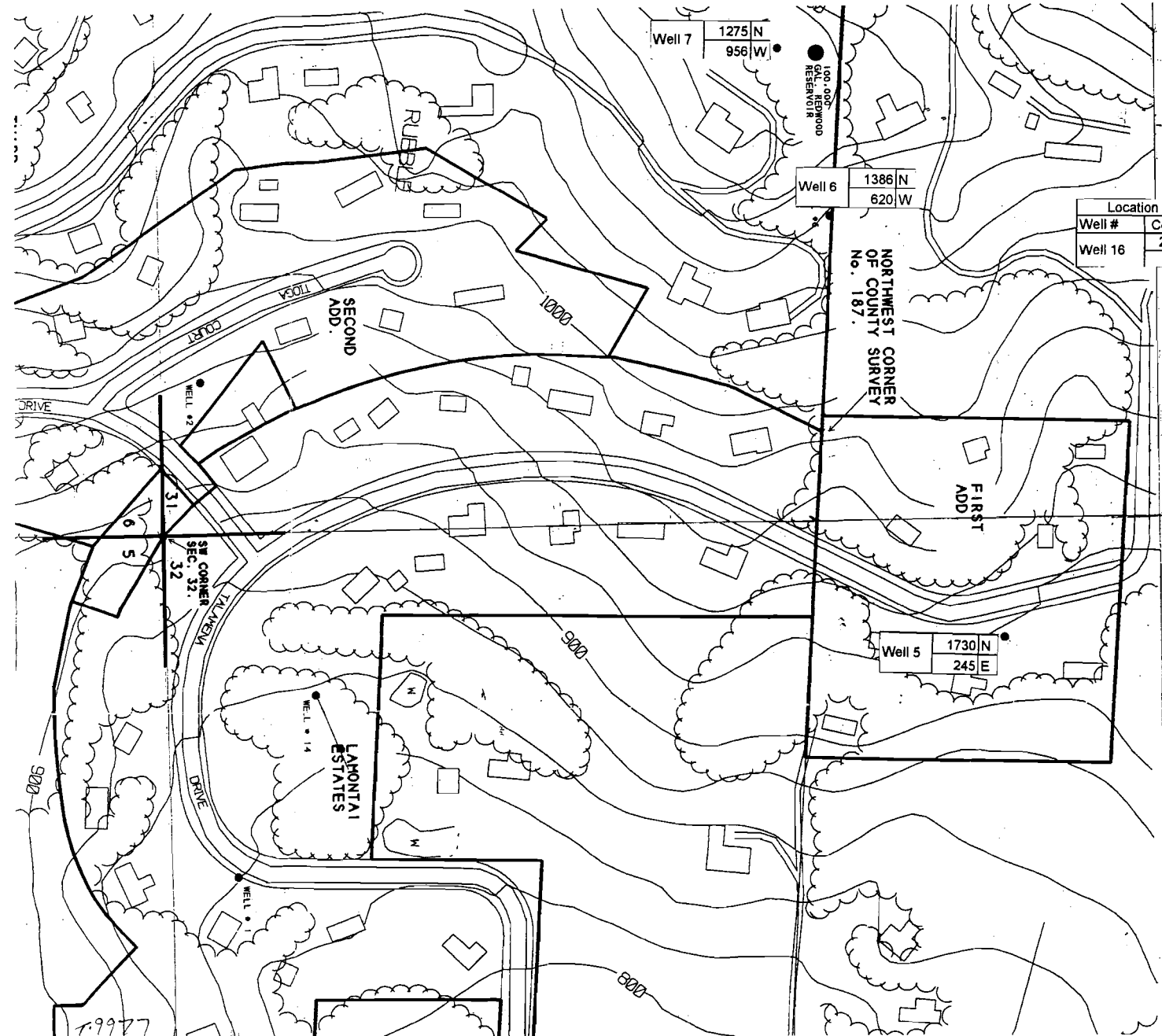
1-9977



Location Example		
Well #	Coordinates, ft	Coordinates from Datum
Well 1	137.3 N 700.7 E	SW Corner, Sec 32 T20s, R3w Willamette Meridian

WELL SITE PLAN
LAMONTAI IMPROVEMENT DISTRICT
SCALE 1 INCH = 200 FT
ORIGINAL MAP BY
POAGE ENGINEERING AND SURVEYING INC
EUGENE OREGON 97402
JOB No 1979 DWN BY DJB, DATE 8-95
MODIFIED TO SHOW WELL LOCATIONS 7/8/05
SHEET 1 OF 3, WELLS 1, 2, 3, 4, 8, 9, 10, 14, 15

McCutcheon



Well 7
1275 N
956 W

Well 6
1386 N
620 W

NORTHWEST CORNER
OF COUNTY SURVEY
No. 187.

Well 5
1730 N
245 E

Location Example		
Well #	Coordinates, ft	Coordinates from Datum
Well 16	2713 N 309 E	SW Corner, Sec 32 T20s, R3w Willamette Meridian

RECEIVED
JUL 25 2005
WATER RESOURCES DEPT
SALEM, OREGON

Well 16
2713 N
309 E

WELL SITE PLAN
LAMONTAI IMPROVEMENT DISTRICT
SCALE 1 INCH = 200 FT
ORIGINAL MAP BY
POAGE ENGINEERING AND SURVEYING INC
EUGENE OREGON 97402
JOB No 1979 DWN BY DJB, DATE 8-95
MODIFIED TO SHOW WELL LOCATIONS 7/8/05
SHEET 2 OF 3, WELLS 5, 6, 7, 16 *M. Baker*

79977

RECEIVED
 JUL 25 2005
 WATER RESOURCES DEPT
 SALEM, OREGON

Section 5 T.21S. R.3W. W.M.
 LANE COUNTY

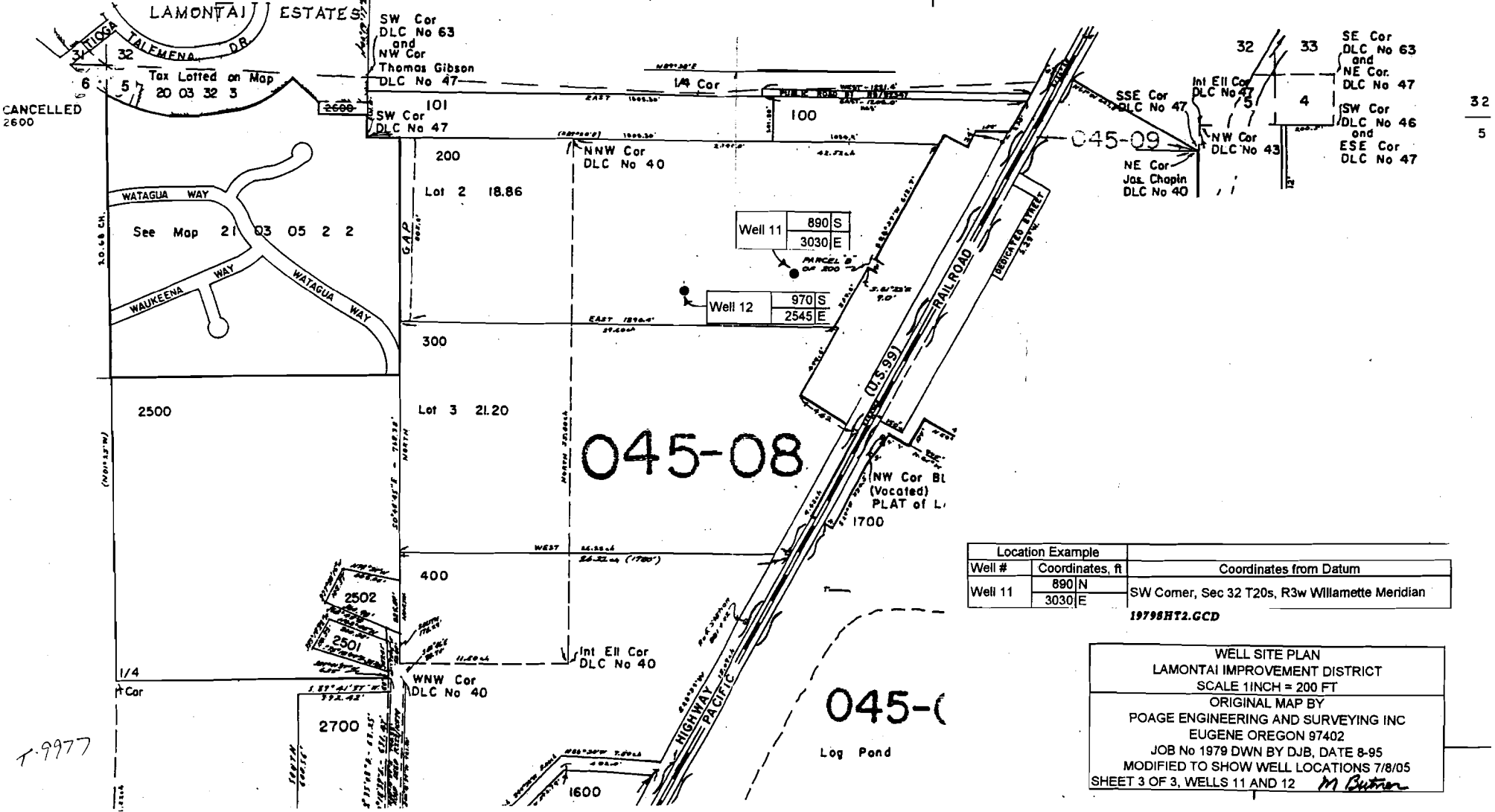
1" = 400

See Map 20 03 32

application
 613606
 permit G12040

RECEIVED
 AUG 28 1995
 WATER RESOURCES DEPT.
 SALEM, OREGON

21 03 05
 & INDEX
 3-5-92
 ADJUST BOUNDARIES
 RE 71200 & 71300



CANCELLED
 2600

32
 5

045-08

045-09

Location Example		
Well #	Coordinates, ft	Coordinates from Datum
Well 11	890 N 3030 E	SW Corner, Sec 32 T20s, R3w Willamette Meridian

19798HT2.GCD

WELL SITE PLAN
 LAMONTAI IMPROVEMENT DISTRICT
 SCALE 1 INCH = 200 FT
 ORIGINAL MAP BY
 POAGE ENGINEERING AND SURVEYING INC
 EUGENE OREGON 97402
 JOB No 1979 DWN BY DJB, DATE 8-95
 MODIFIED TO SHOW WELL LOCATIONS 7/8/05
 SHEET 3 OF 3, WELLS 11 AND 12
M. Butner

T-9977