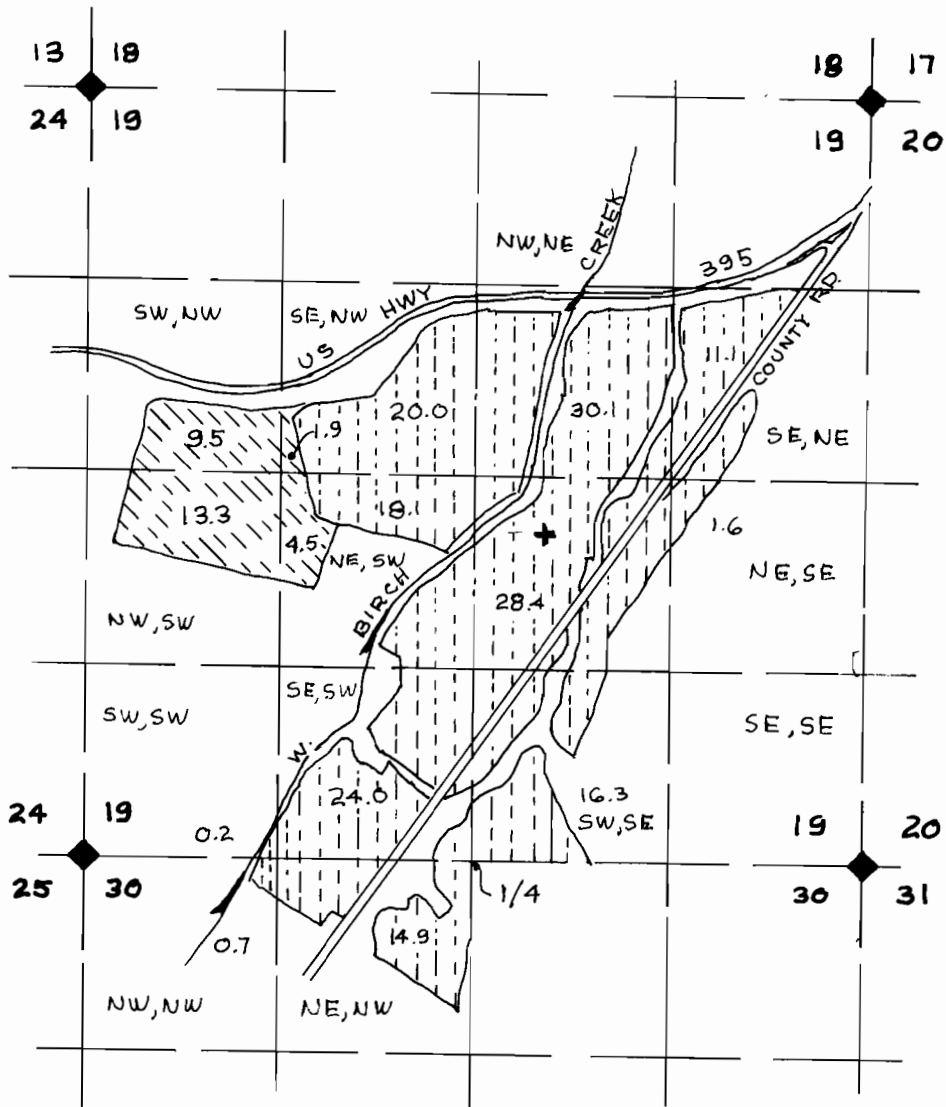


RECEIVED

SEP 11 1999

WATER RESOURCES DEPT.
SALES & REG.



+ NEW WELL 2305 N, 485 E OF S 1/4



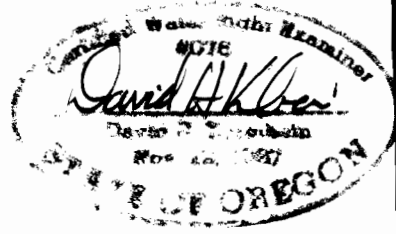
KRUMBEIN ENGINEERING LTD.
 ENGINEERS — SURVEYORS — PLANNERS
 361 SE. SECOND Pendleton, Oregon

Scale 1"=1320'	Drn. By DHK	Drng. No. 9947A	Revision 1
Date 9-26-99	Ckd. By	Job No. 9233	Revision 2

FINAL PROOF SURVEY &
CLAIM OF BENEFICIAL USE

AH RANCHES

SECTIONS 19 & 30
T. 1 S., R. 32 E.W.M.
UMATILLA COUNTY, OR.



APPLICATION #13156
PERMIT NO. G-12162

RENEWS 6/30/01