

N<sup>1</sup>/<sub>4</sub> Corner  
Section 24

441 ft  
(From plat survey)

N

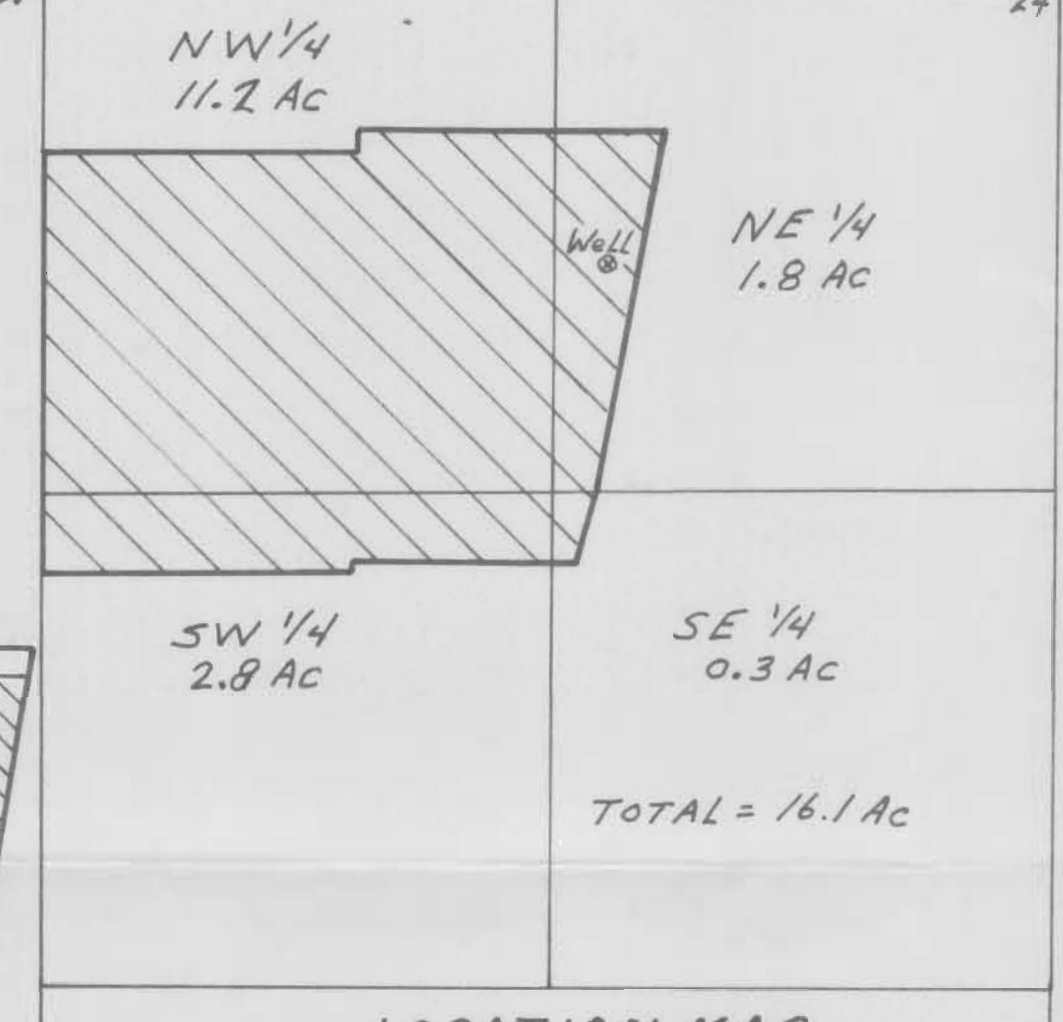
1620 feet (photo tie)  
(695 ft South, 1465 ft East, N<sup>1</sup>/<sub>4</sub> corner)

# DETAIL MAP ARRANMORE HOMEOWNERS ASSOC.

Scale: 1 inch = 100 feet

N<sup>1</sup>/<sub>4</sub> Corner, Section 24, T1S, R1W, W1M

13.18  
24.19



LOCATION MAP  
Scale: 1 in = 500 ft



Legend:

- Irrigated Area
- Paved Walkway
- Buried Main Line

WATER RIGHT - FINAL PROOF SURVEY  
ARRANMORE HOMEOWNERS ASSOC.  
7185 SW Chapel Lane  
Portland, OR 97223  
File: G-13416 Permit: G-12278

by: H&R Engineering, Inc.  
2340 NW 15<sup>th</sup> ST.  
Redmond, OR 97756



This map prepared for the purpose of identifying the location of water right only, and is not intended to provide legal dimensions or location of property ownership lines.