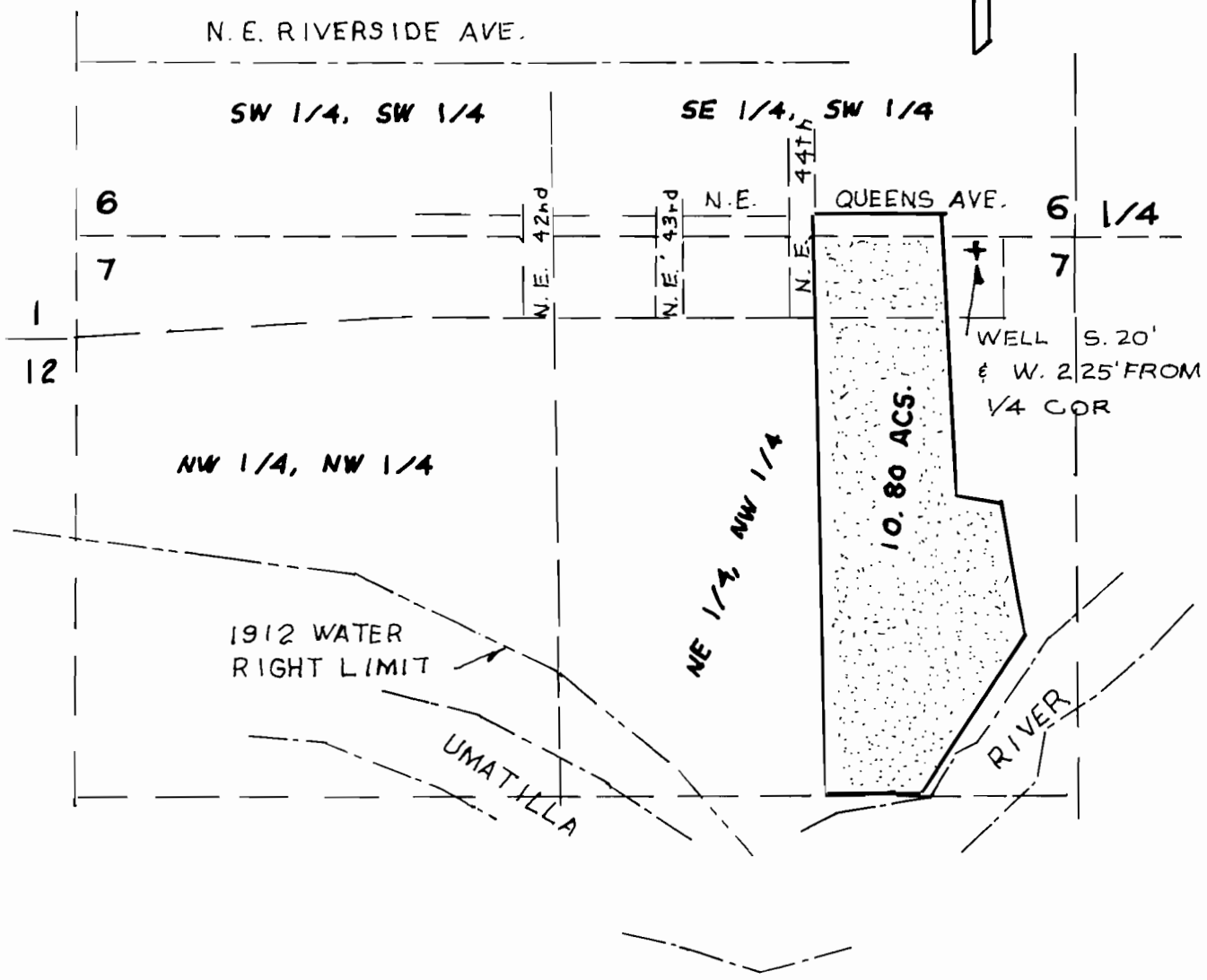


RECEIVED

WATER RESOURCES  
SALEM OREGON



**K** KRUMBEIN ENGINEERING LTD.

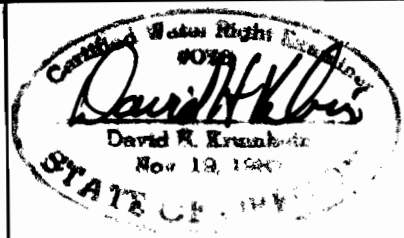
361 SE SECOND PENDLETON, OR.

SCALE 1" = 400'	DRN BY DHK	DRNG. NO 0027A
DATE 8-29-06		JOB NO. 9225

FINAL PROOF MAP &  
CLAIM OF BENEFICIAL USE

**SPIESS**

NE 1/4, NW 1/4  
SECTION 7, T.2 N., R.33 E.W.M.  
UMATILLA COUNTY, OR.



**G-13162**

RENEWS 6/30/01