

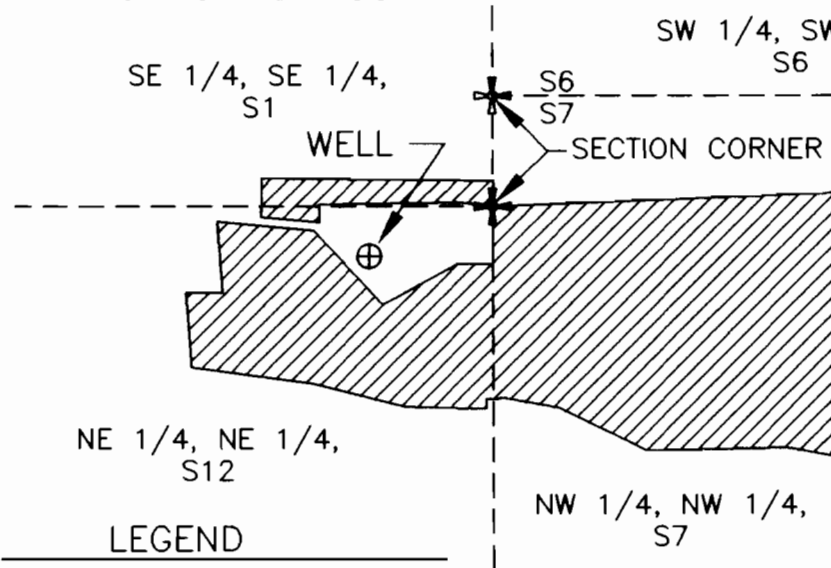
FINAL PROOF SURVEY AND CLAIM OF BENEFICIAL USE

SUPPLEMENTAL IRRIGATION
LOCATED WITHIN

SE 1/4, SE 1/4, SECTION 1, NE 1/4, NE 1/4, SECTION 12
T.2N., R.32E. AND NW 1/4, NW 1/4, SECTION 7,
T.2N., R.33E., W.M., UMATILLA COUNTY, OREGON
APPLICANT: CLYDE HUNT

APPPLICATION G-13367

PERMIT G-12381



CORNER TIE:
THE WELL IS
LOCATED 105 FEET
SOUTH AND 255
FEET WEST OF THE
NORTHEAST CORNER
OF SECTION 12,
T.2N., R.32E., W.M.

LEGEND

- AREA IRRIGATED
- WELL
- SECTION CORNER
- SECTION LINE

AREA SUPPLEMENTALLY IRRIGATED

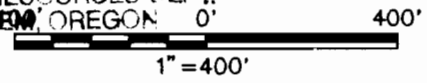
SE 1/4, SE 1/4, S1 - 0.59 ACRES
NE 1/4, NE 1/4, S12 - 4.08 ACRES
NW 1/4, NW 1/4, S7 - 8.00 ACRES

TOTAL - 12.67 ACRES

RECEIVED

SEP 23 2000

WATER RESOURCES DEPT.
SALEM, OREGON



THIS MAP IS PREPARED FOR THE EXPRESS PURPOSE TO SHOW WATER APPROPRIATION AND USE. IT IS NOT INTENDED TO SHOW OR LOCATE PROPERTY OWNERSHIP LINES.



DENNIS L. GAYLORD,
CWRE
71614 S.W. LAKE DRIVE
PENDLETON, OR 97801
(541)-276-6260
SEPTEMBER, 2000
Mill Creek Drafting

©

Renews 6/30/2001