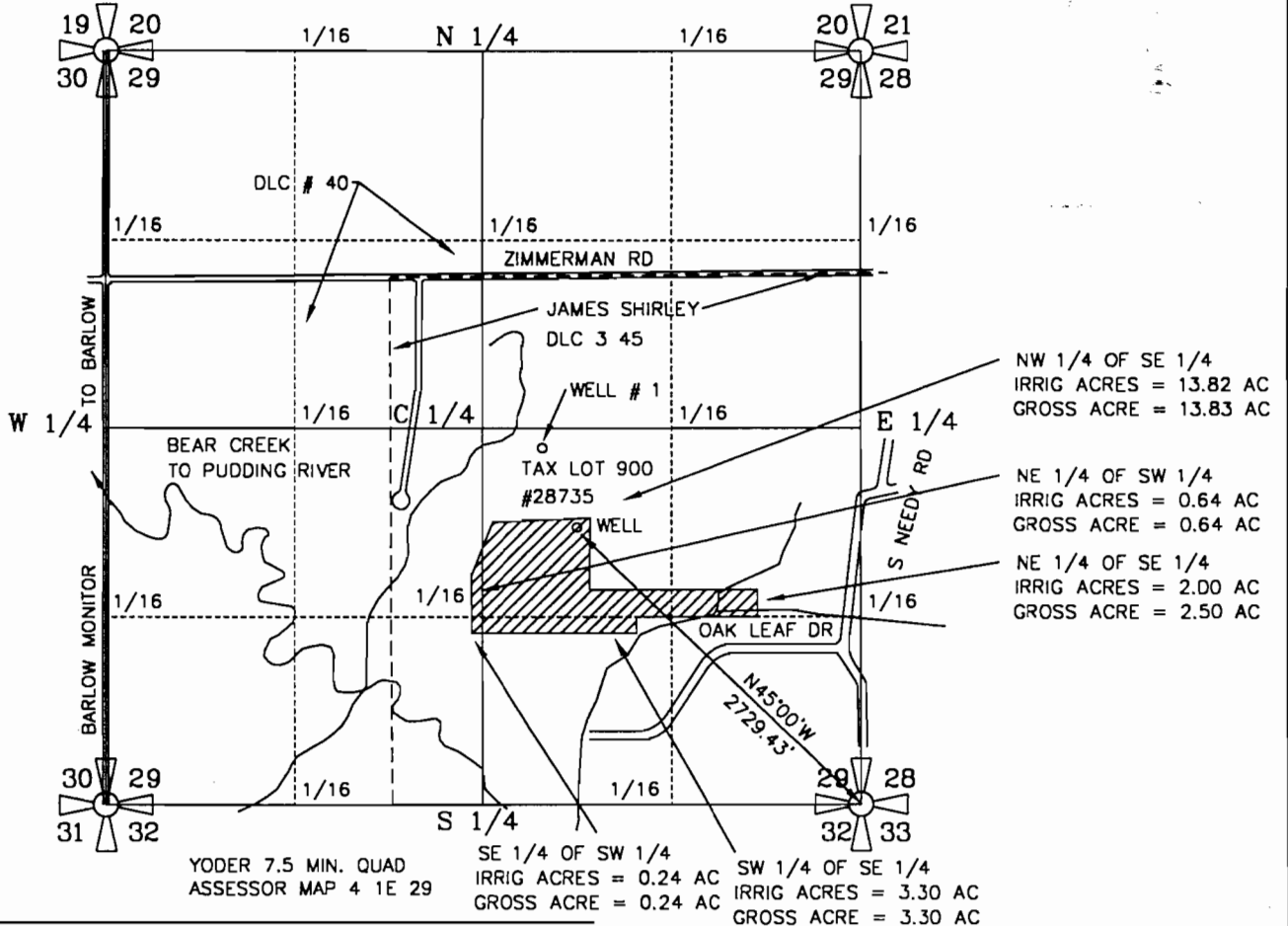


NW 1/4 OF THE SE 1/4 OF SECTION 29  
 NE 1/4 OF THE SE 1/4 OF SECTION 29  
 SW 1/4 OF THE SE 1/4 OF SECTION 29  
 SE 1/4 OF THE SW 1/4 OF SECTION 29  
 NE 1/4 OF THE SW 1/4 OF SECTION 29  
 T4S, R1E of the WM  
 CLACKAMAS COUNTY, OREGON



NW 1/4 OF SE 1/4  
 IRRIG ACRES = 13.82 AC  
 GROSS ACRE = 13.83 AC

NE 1/4 OF SW 1/4  
 IRRIG ACRES = 0.64 AC  
 GROSS ACRE = 0.64 AC

NE 1/4 OF SE 1/4  
 IRRIG ACRES = 2.00 AC  
 GROSS ACRE = 2.50 AC

YODER 7.5 MIN. QUAD  
 ASSESSOR MAP 4 1E 29

SE 1/4 OF SW 1/4  
 IRRIG ACRES = 0.24 AC  
 GROSS ACRE = 0.24 AC

SW 1/4 OF SE 1/4  
 IRRIG ACRES = 3.30 AC  
 GROSS ACRE = 3.30 AC

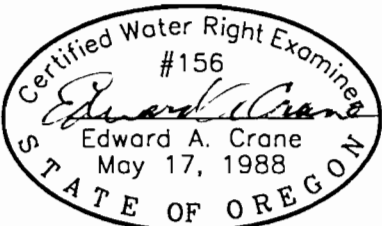
PREPARATION OF THIS MAP WAS FOR THE PURPOSE OF IDENTIFYING THE LOCATION OF THE WATER RIGHTS ONLY AND HAS NO INTENT TO PROVIDE DIMENSIONS OR LOCATION OF PROPERTY OWNERSHIP LINES.

IRRIGATION LOCATION	IRRIGATION AREA:
NE 1/4 OF SW 1/4 OF SECTION 29	0.64 ACRES
SE 1/4 OF SW 1/4 OF SECTION 29	0.24 ACRES
NE 1/4 OF SE 1/4 OF SECTION 29	2.00 ACRES
NW 1/4 OF SE 1/4 OF SECTION 29	13.82 ACRES
SW 1/4 OF SE 1/4 OF SECTION 29	3.30 ACRES
TOTAL ACRES = 20.00 ACRES	

WELL #1 IS LOCATED 1930 FEET NORTH AND 1930 FEET WEST OF THE SOUTHEAST CORNER OF SECTION 29, (LOCATED IN THE JAMES SHIRLEY DLC NO 45) TOWNSHIP 4 SOUTH, RANGE 1 EAST OF WILLAMETTE MERIDIAN, CLACKAMAS COUNTY, OREGON

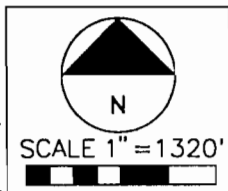
## FINAL PROOF SURVEY GROUNDWATER PERMIT G-12519

PREPARED BY EDWARD A. CRANE, CWRE



Renewal 12/31/01  
 Signed *E. A. Crane*

SURVEYED MAY 2, 2000  
 BY EDWARD A. CRANE, CWRE



DATE  
 MAY 2000

PROJECT NO.  
 121-006



**CRANE & MERSETH**  
 Engineering/Surveying  
 SUITE "D"  
 6566 SE LAKE ROAD  
 MILWAUKIE, OREGON 97222  
 BUS: (503) 654-2005  
 FAX: (503) 654-2575

APPLICATION FOR PERMIT NUMBER G-13885  
 PERMIT NUMBER G-12519 IN THE NAME OF:  
 COLONY NURSERY, INC.  
 28889 S NEEDED ROAD, CANBY 97013  
 TEL: 503-651-2348; FAX: 503-651-2524

SHEET  
 1/1