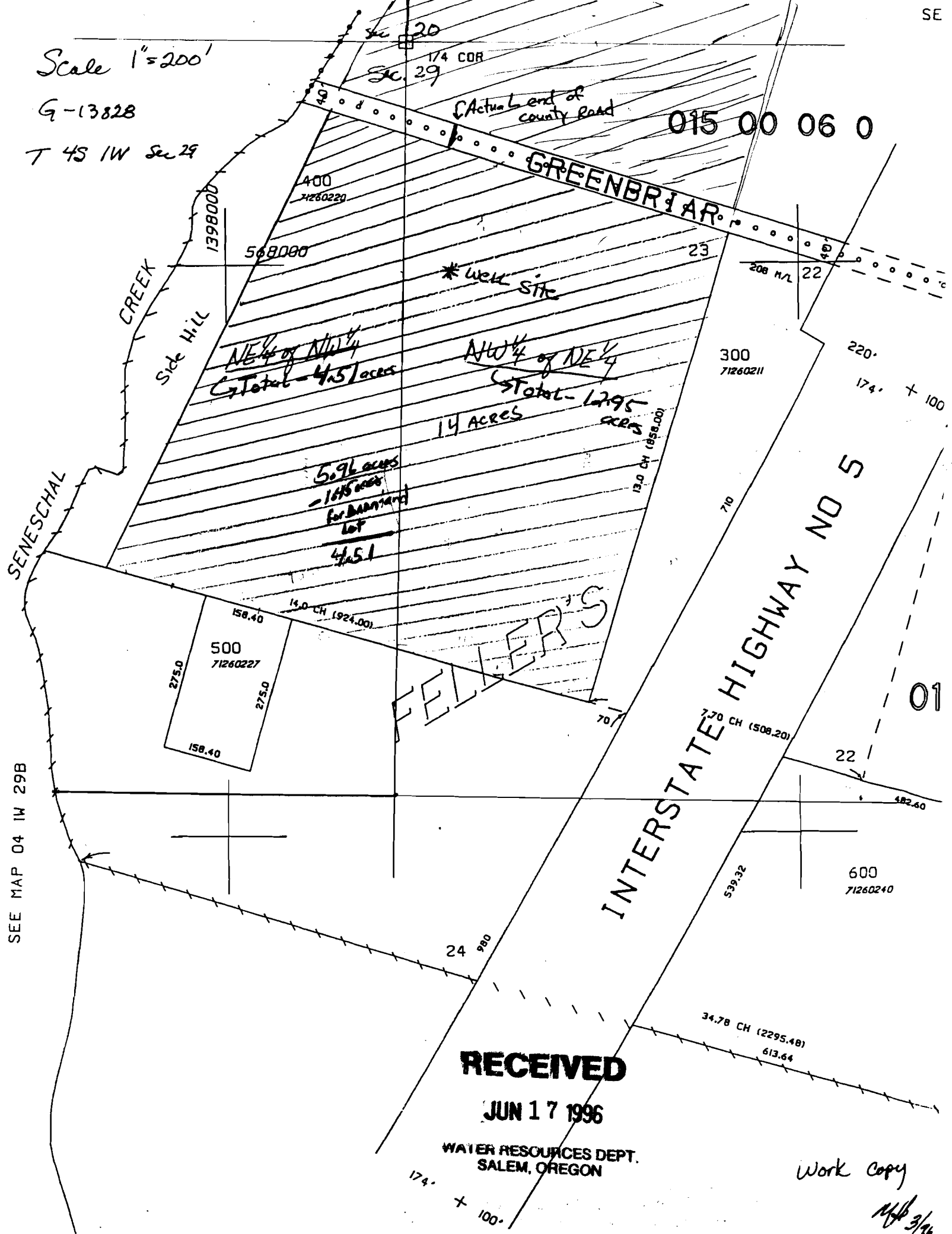


Scale 1"=200'

G-13828

T 4S 1W Sec 29



RECEIVED

JUN 17 1996

WATER RESOURCES DEPT.
SALEM, OREGON

Work Copy

MFB 3/96

SEE MAP 04 1W 29B

permit G12554

RECEIVED

JUN 17 1996

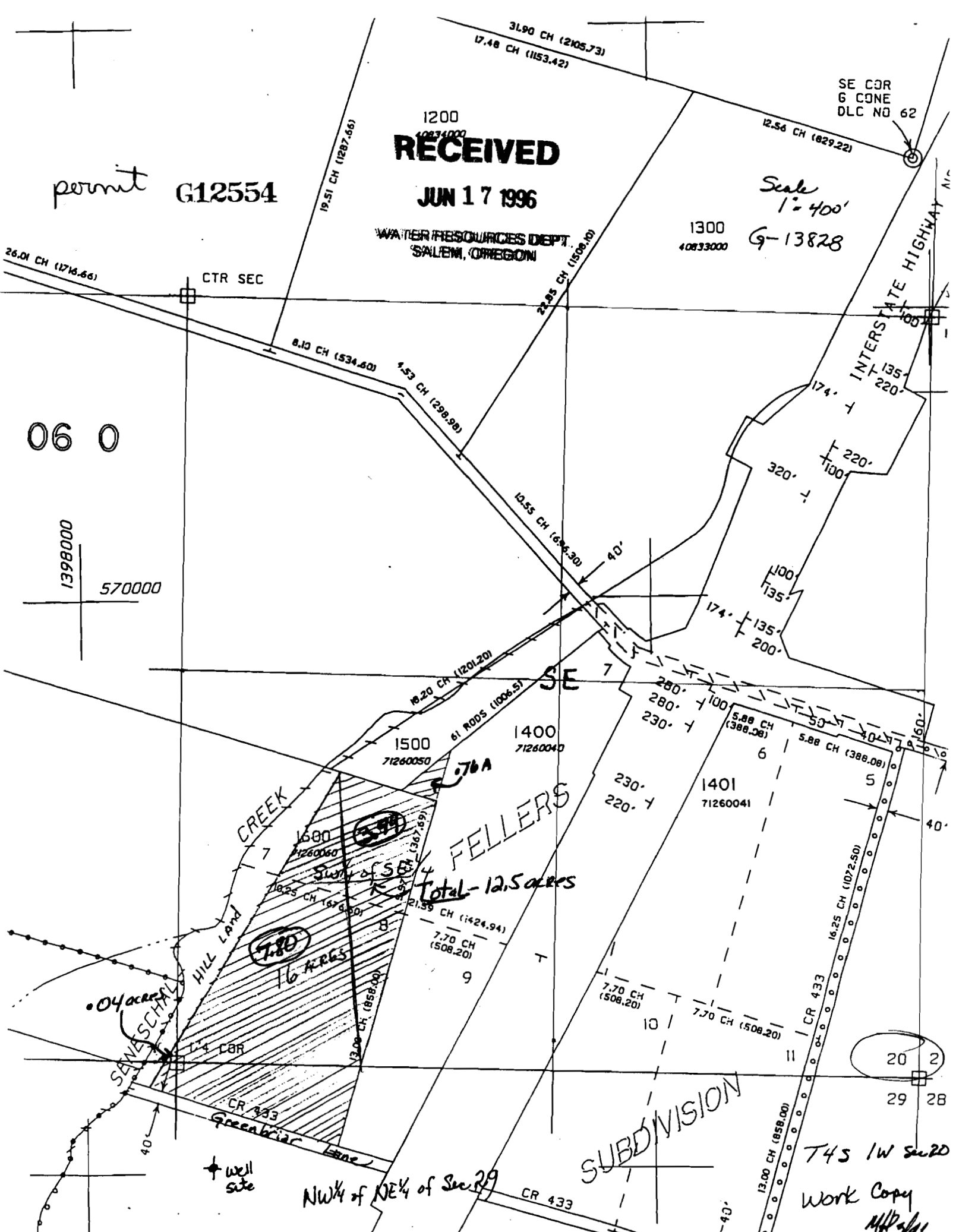
WATER RESOURCES DEPT.
SALEM, OREGON

Scale
1" = 400'

G-13828

SE COR
6 CORNER
DLC NO 62

06 0
1398000
570000



FELLERS
Total - 12.5 acres

7.80
16 acres

0.04 acres

well site

NW 1/4 of NE 1/4 of Sec 29

SUBDIVISION

T4S 1W Sec 20
Work Copy
MR 3/16