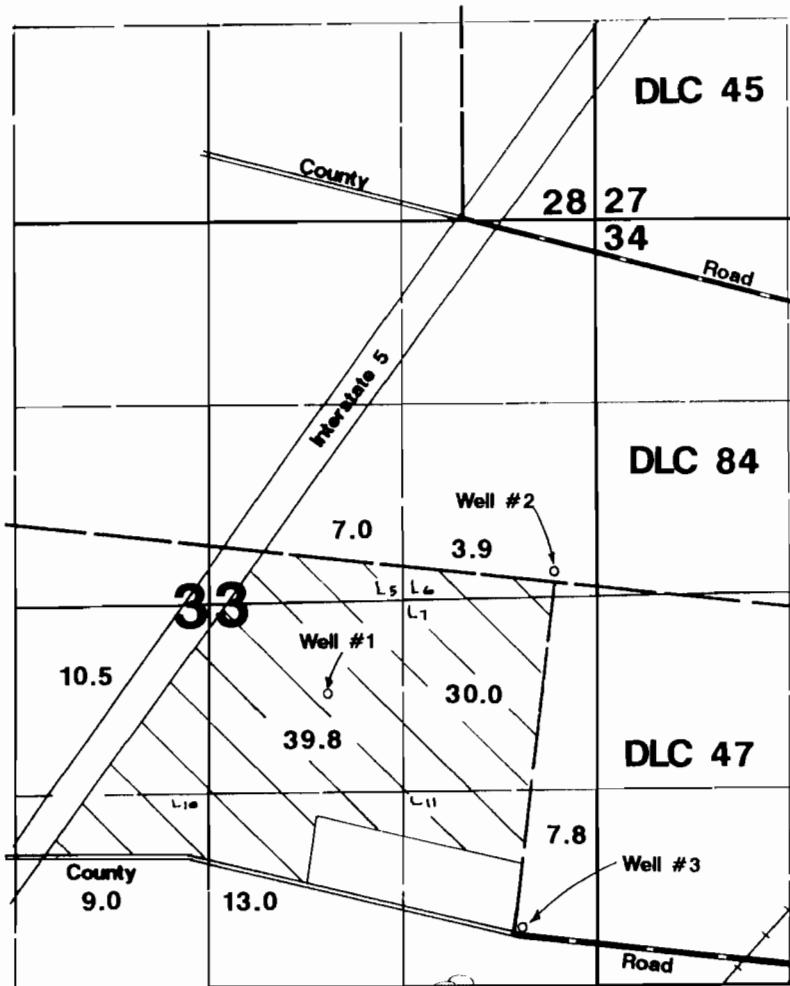


T.5S., R.2W., W.M.

RECEIVED

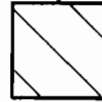
MAY 21 1996

WATER RESOURCES DEPT.
SALEM, OREGON



1" = 1320'

Area Irrigated



Well #1 located 1670'N & 1250'E from SW corner DLC 47.
Well #2 located 2420'S & 600'E from SE corner DLC 45.
Well #3 located 70'N & 80'E from SW corner DLC 47.



Application Map

Salem Trap & Skeet Club Inc.

Application #: G-13241 Permit #: G12617