

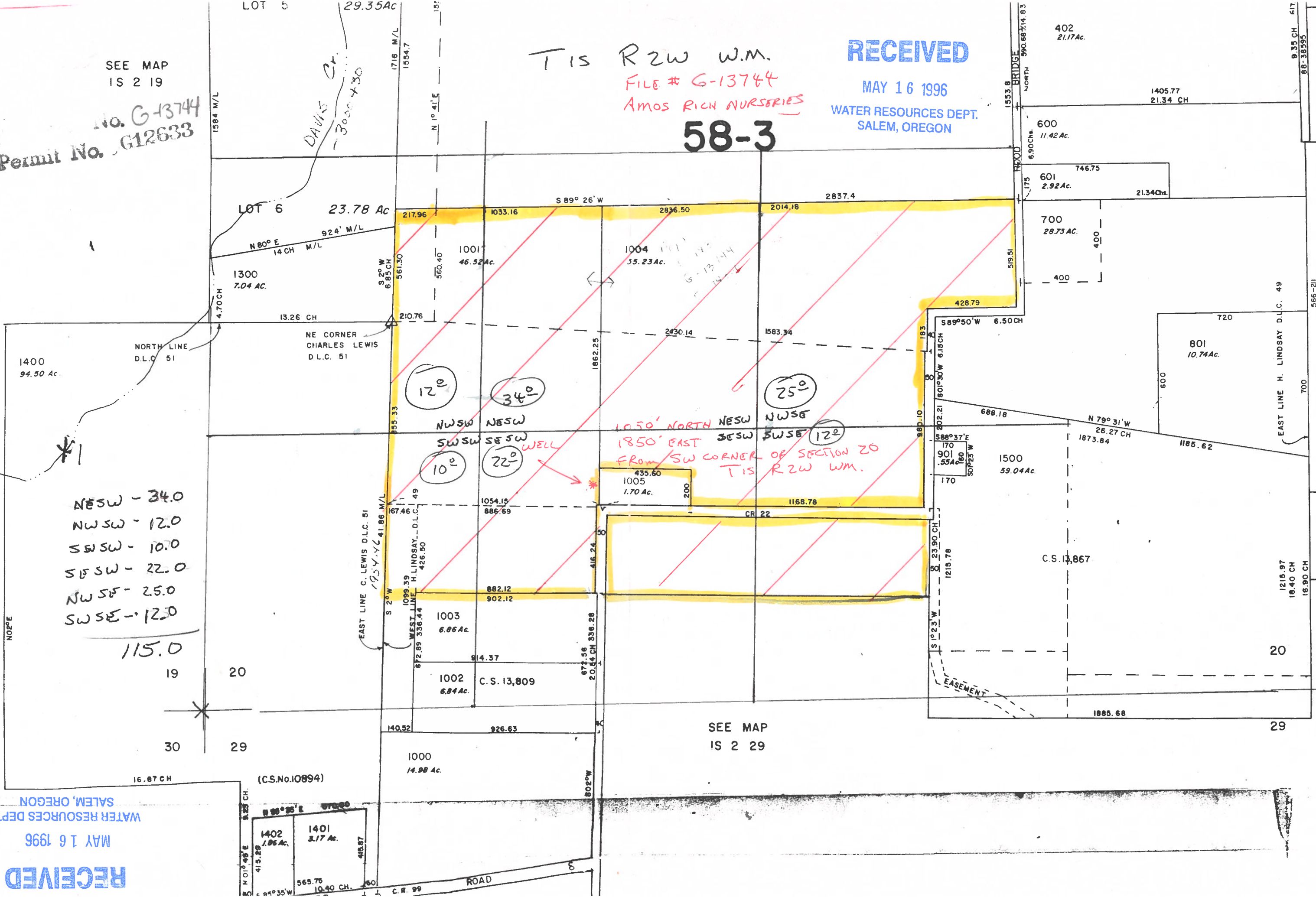
SEE MAP IS 2 19  
 No. G-13744  
 Permit No. G12633

T 1 S R 2 W W.M.  
 FILE # G-13744  
 AMOS RICH NURSERIES

RECEIVED

MAY 16 1996  
 WATER RESOURCES DEPT.  
 SALEM, OREGON

58-3



NESW - 34.0  
 NWSW - 12.0  
 SWSW - 10.0  
 SWSW - 22.0  
 NWSW - 25.0  
 SWSW - 12.0  
 115.0

1050' NORTH NESW  
 1850' EAST SWSW  
 FROM SW CORNER OF SECTION 20  
 T 1 S R 2 W W.M.

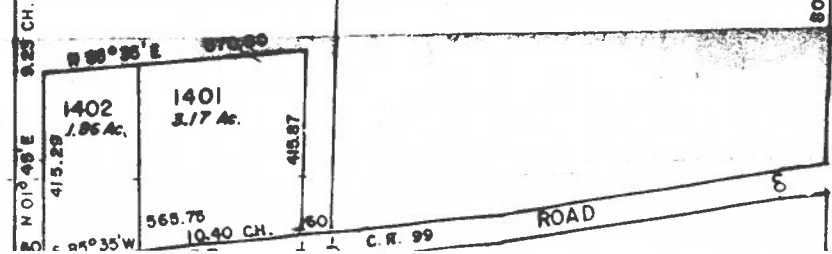
WATER RESOURCES DEPT.  
 SALEM, OREGON

MAY 16 1996

RECEIVED

SEE MAP IS 2 29

(C.S.No.10894)



402  
21.17Ac.

1405.77  
21.34 CH

600  
11.42 Ac.

601  
2.92 Ac.

700  
28.73 Ac.

801  
10.74 Ac.

1500  
59.04 Ac.

1003  
6.86 Ac.

1002  
6.84 Ac.

1000  
14.98 Ac.

20

29

9.35 CH  
617  
86-36595

EAST LINE H. LINDSAY D.L.C. 49  
700  
566-21

1215.97  
18.40 CH  
16.90 CH

BRIDGE  
NORTH  
590.68  
14.83

S 89° 50' W  
6.50 CH

S 88° 37' E  
170  
901  
55A  
160  
50° 23' W

S 10° 23' W  
1215.78

EASEMENT

C.S. 13,867

1885.68

EAST LINE C. LEWIS D.L.C. 51  
1954.7  
41.86 M/L

WEST LINE H. LINDSAY D.L.C. 49  
426.50

802° W  
20.84 CH  
336.28

ROAD

C.R. 99