

T3S, R2W, W.M.

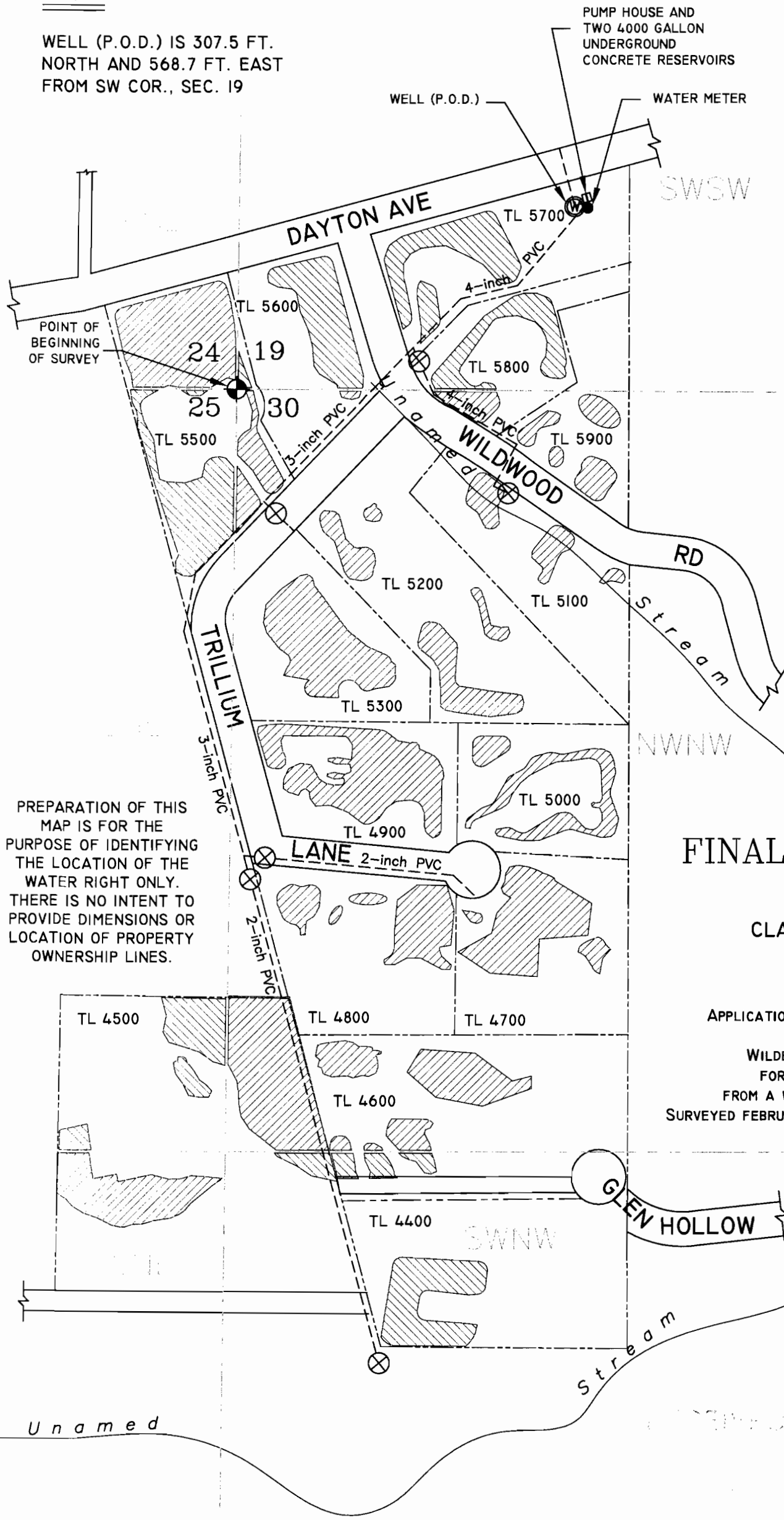
SW 1/4 SW 1/4 SEC 19 and NW 1/4 NW 1/4 and SW 1/4 NW 1/4 SEC 30

T3S, R3W, W.M.

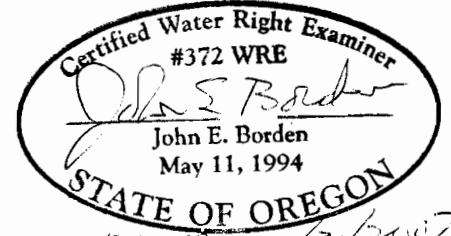
SE 1/4 SE 1/4 SEC 24 and NE 1/4 NE 1/4 and SE 1/4 NE 1/4 SEC 25

NOTE:

WELL (P.O.D.) IS 307.5 FT. NORTH AND 568.7 FT. EAST FROM SW COR., SEC. 19



SCALE: 1"=200'



EXPIRES 12/31/2007
 P.O.U. - PLACE OF IRRIGATION USE
 WATER USE ACREAGE

SECTION 19	SW 1/4 SW 1/4 - 1.08 AC
SECTION 24	SE 1/4 SE 1/4 - 0.68 AC
SECTION 25	NE 1/4 NE 1/4 - 0.74 AC SE 1/4 NE 1/4 - 0.42 AC
SECTION 30	NW 1/4 NW 1/4 - 4.77 AC SW 1/4 NW 1/4 - 0.56 AC
TOTAL	= 8.25 AC

PREPARATION OF THIS MAP IS FOR THE PURPOSE OF IDENTIFYING THE LOCATION OF THE WATER RIGHT ONLY. THERE IS NO INTENT TO PROVIDE DIMENSIONS OR LOCATION OF PROPERTY OWNERSHIP LINES.

FINAL PROOF SURVEY

AND
 CLAIM OF BENEFICIAL USE
 UNDER

APPLICATION No. G-13604, PERMIT No. G-12733
 IN THE NAME OF
 WILDERNESS CANYON WATER DISTRICT
 FOR DOMESTIC AND IRRIGATION USE
 FROM A WELL IN THE CHEHALEM CREEK BASIN
 SURVEYED FEBRUARY 20, 2004, BY JOHN E. BORDEN, CWRE

LEGEND

- TAX LOT BOUNDARY
- - - USGS GRID
- - - EASEMENT
- OPEN WATER
- ROADWAY
- - - WATER DISTRIBUTION
- ⊙ WELL (P.O.D.)
- ⊗ GATE VALVE OR BLOW-OFF
- ⊕ SECTION CORNER
- ▨ IRRIGATED AREA (P.O.U.)

JOHN BORDEN
 CONSULTING

5597 RIVER STREET
 WEST LINN, OR. 97068
 503-723-4257

WILDERNESS CANYON WATER DISTRICT
WATER RIGHT

FILE PATH & NAME: J3\D:\MO\son-WIL