

T4S R39E. WM.

UNION COUNTY

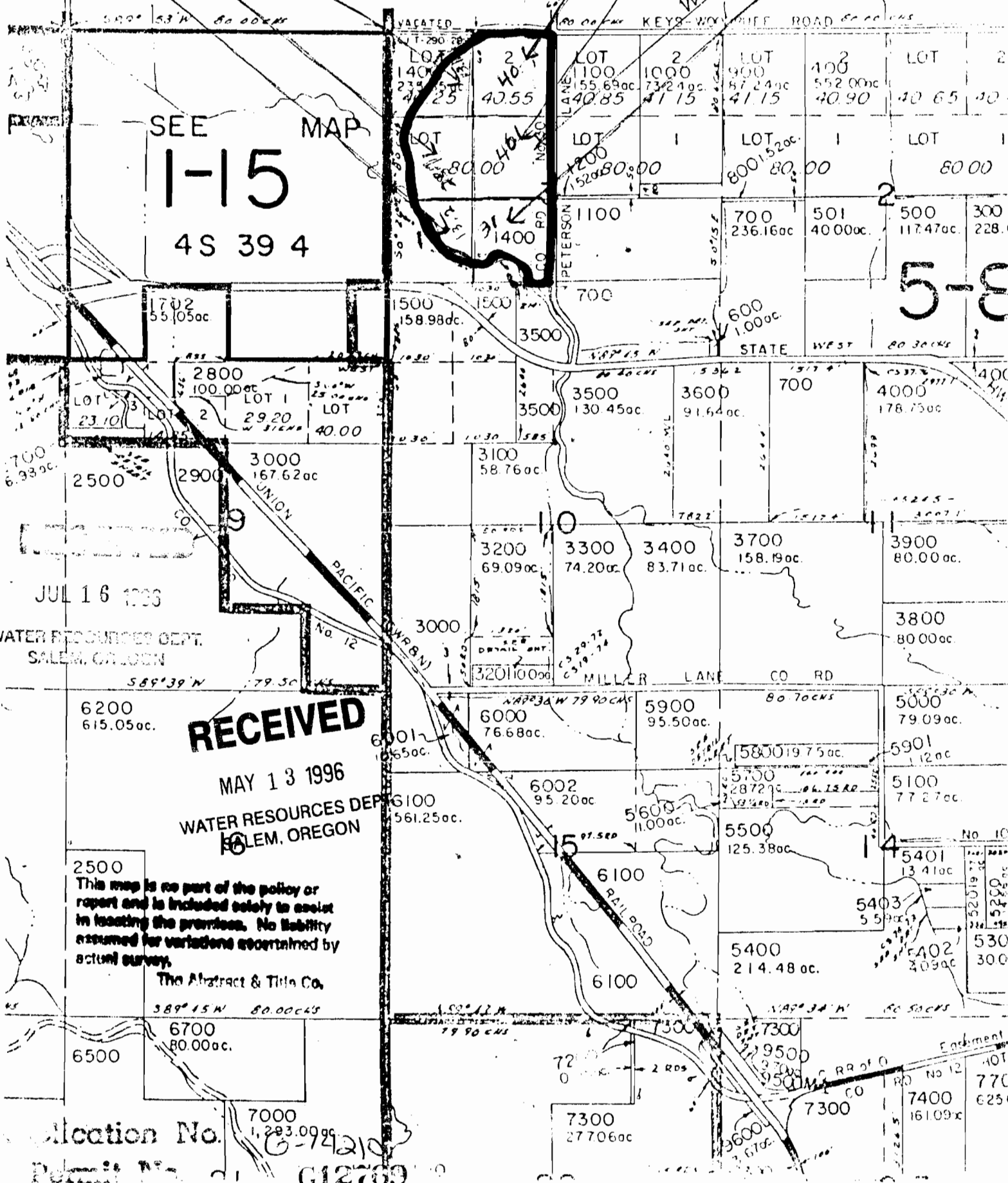
1" = 2000'

SEE MAP 3S 39

13.72 ac
13.1 ac
7.87 ac

40 ac
40 ac

31 ac



SEE MAP

1-15

4S 39 4

5-8

JUL 16 1936

WATER RESOURCES DEPT.
SALEM, OREGON

RECEIVED

MAY 13 1996

WATER RESOURCES DEPT.
SALEM, OREGON

2500
This map is no part of the policy or report and is included solely to assist in locating the premises. No liability assumed for variations ascertained by actual survey.

The Abstract & Title Co.

389°15'W 80.00 ac

6700
80.00 ac.

6500

7000
1,293.00 ac

Allocation No.

Permit No.

6-72210
G12769