

RECEIVED

AUG 31 2006

WATER RESOURCES DEPT
SALEM, OREGON

LEGEND:

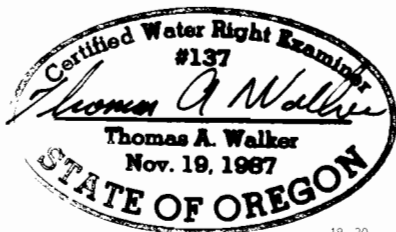


SECONDARY RIGHT
IRRIGATED AREA
(21.6 ACRES TOTAL)

PLACE OF USE	AREA
SW 1/4 NE 1/4	4.4 ACRES
SE 1/4 NW 1/4	2.7 ACRES
NE 1/4 SW 1/4	13.0 ACRES
NW 1/4 W 1/4	1.5 ACRES

PLACE OF USE	AREA
SW 1/4 NE 1/4	4.4 ACRES
SE 1/4 NW 1/4	2.7 ACRES
NE 1/4 SW 1/4	13.0 ACRES
NW 1/4 W 1/4	1.5 ACRES

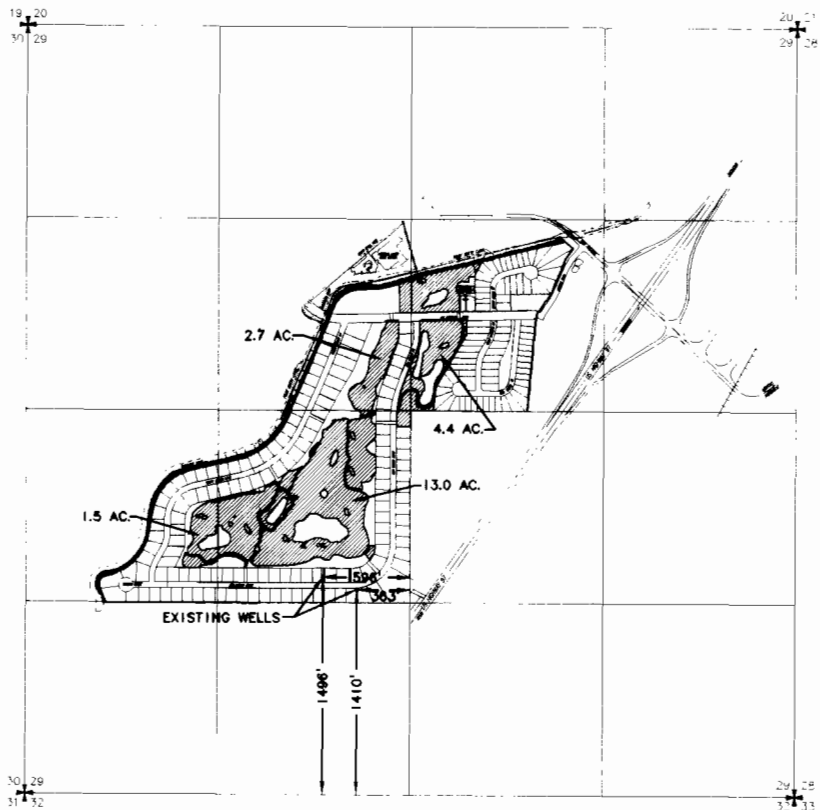
TOTAL: 21.6 ACRES



EXPIRES 6:30.01



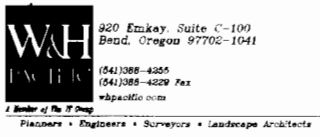
= 1:320'



DATE	BY	REVISION	CHK

PACIFIC NORTHWEST DEVELOPMENT
THE GREENS AT REDMOND
FINAL PROOF SURVEY

DRAWN BY: CED
 DESIGNED BY: CDC
 CHECKED BY:
 APPROVED BY:



BENI DESCOTES CD
 SCALE: 1"=1320'
 PROJECT NO.: 1610-0301
 FILE NAME: GARFPS1.DWG
 CR

PLOT DATE: 8:30.00
LAST EDIT