

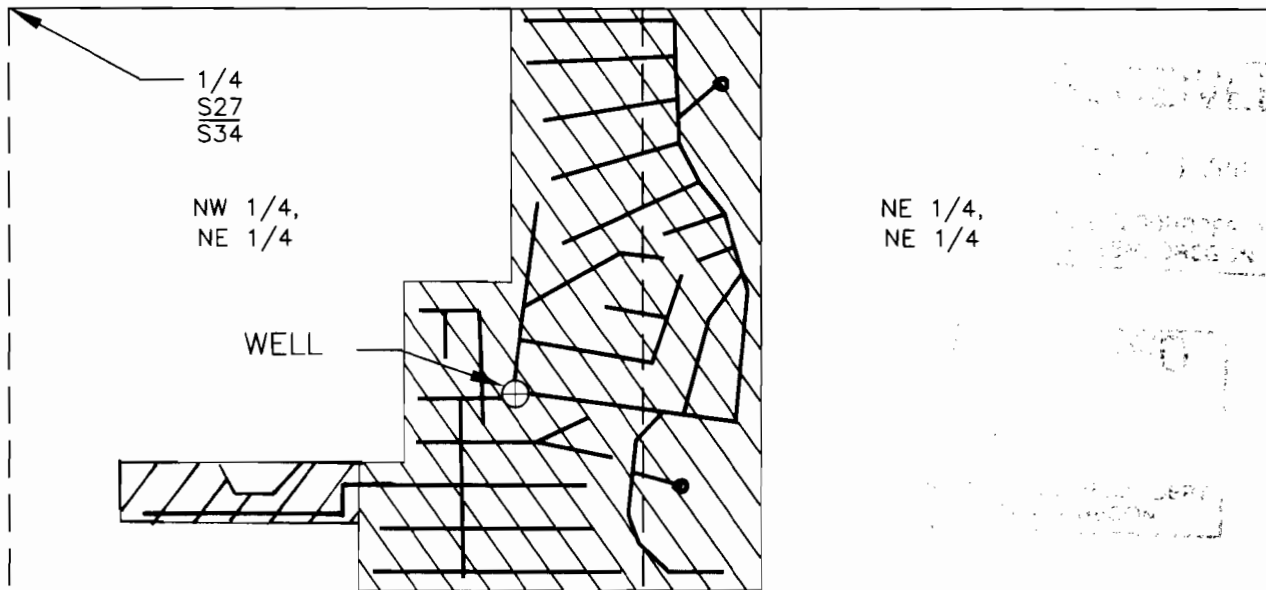
FINAL PROOF SURVEY
AND
CLAIM OF BENEFICIAL USE

LOCATED WITHIN
NE 1/4, NE 1/4 AND NW 1/4, NE 1/4 SECTION 34, T.2N., R.32E., W.M.,
UMATILLA COUNTY, OREGON

APPLICATION G-14049

APPLICANT: STEVE HALE

PERMIT G-12822



SECTION
34

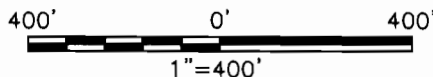
LEGEND

- SECTION LINE
- - - - - 1/16TH LINE
- ⊕ WELL
- BURIED 3" PVC LINES
W/SPRINKLERS
- RISERS
- = AREA BENEFICIALLY IRRIGATED-PRIMARY
- = SUPPLEMENTAL IRRIGATION

CORNER TIE:
THE WELL IS WITHIN THE NW
1/4, NE 1/4, SECTION 34,
AND IS 805' SOUTH AND
1,055' EAST OF THE NORTH 1/4
CORNER OF SAID SECTION 34.

AREA BENEFICIALLY IRRIGATED: (PRIMARY)
NE 1/4, NE 1/4, S34 = 6.82 ACRES
NW 1/4, NE 1/4, S34 = 11.55 ACRES
SUPPLEMENTAL:
NW 1/4, NE 1/4, S34 = 1.18 ACRES

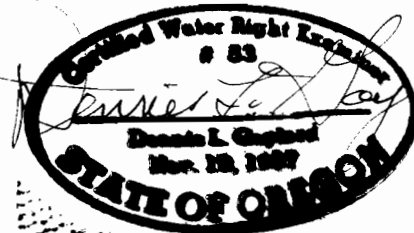
TOTAL: 19.55 ACRES



REVISED FEB 5, 2005

THIS MAP IS PREPARED FOR THE EXPRESS PURPOSE TO SHOW WATER APPROPRIATION AND USE. IT IS NOT INTENDED TO SHOW OR LOCATE PROPERTY OWNERSHIP LINES.

©



Renews 6/30/2005

DENNIS L. GAYLORD,
CWRE
71614 S.W. LAKE DRIVE
PENDLETON, OR 97801
(541)-276-6260
SEPTEMBER, 2003

Mill Creek Drafting