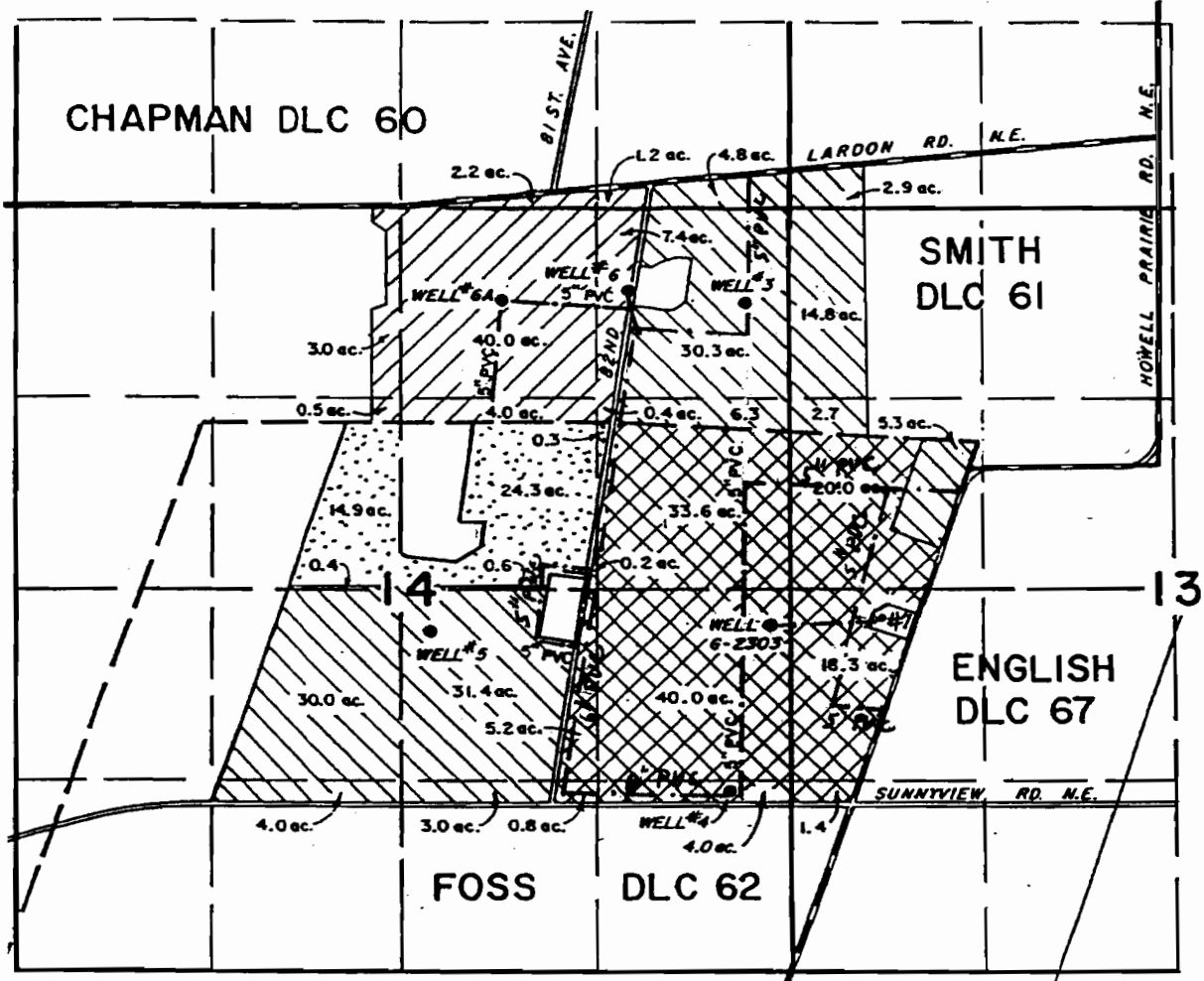


T.7S., R.2W., W.M



- Well No. 3 (MARI 7067, 7057), 1170 ft south and 2840 feet west from NE corner Smith DLC 61
- Well No. 4 (MARI 7074, 7073, 54160), 2420 feet south and 1700 feet west from NE corner Foss DLC 62
- Well No. 5 (MARI 7063), 1320 feet south and 3735 feet west from NE corner Foss DLC 62
- Well No. 6 (MARI 7072), 1110 feet south and 3570 feet west from NE corner Smith DLC 61
- Well No. 6A (MARI 7062), 1160 feet south and 4480 feet west from NE corner Smith DLC 61
- Well No. 7 (MARI 18003), 1210 feet south and 690 feet west from NE corner Foss DLC 62
- Well No. G-2303 (MARI 7050), 1250 feet south and 1410 feet west from NE corner Foss DLC 62



EXPIRATION DATE: 12/31/09

- Primary
- G-8007
- G-1394
- G-2303

Scale: 1" = 1,320'



0 1,320 Feet

This map was prepared for the purpose of identifying the location of a water right only and is not intended to provide legal dimensions or location of property ownership lines.



Claim of Beneficial Use

G & C Farms, Jeffrey Roth
T.7 S. R.2W. Sec. 13 and 14

Pacific Hydro-Geology Inc.

Application No. G-12307

Permit No. G-12839