

P.O.B. OF SURVEY -- NW COR J. WEBB DLC NO. 56 -- ON CENTERLINE OF WACONDA RD.

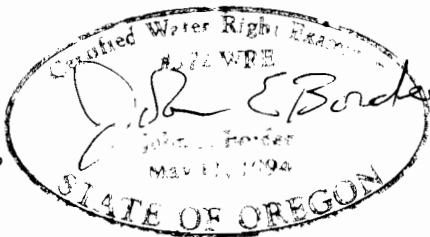
2 1
11 12

N 1/4 COR

T. 6S. R2W. W.M.

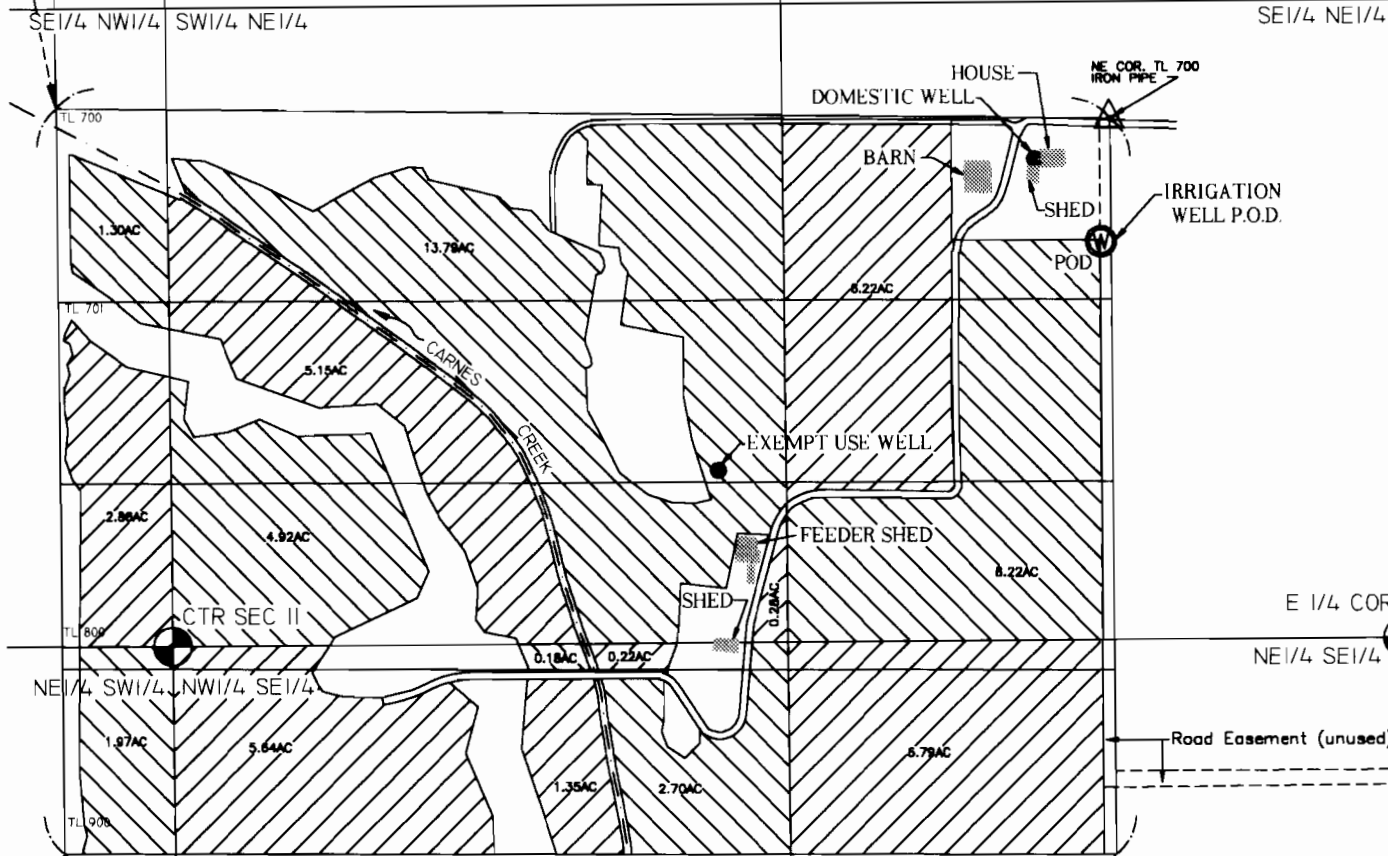
P.O.U. -- PLACE OF IRRIGATION USE
WATER USE ACREAGE BY 1/4 1/4

SW 1/4 NE 1/4	-	24.14 AC
SE 1/4 NE 1/4	-	14.44 AC
SE 1/4 NW 1/4	-	4.16 AC
NE 1/4 SW 1/4	-	1.97 AC
NW 1/4 SE 1/4	-	10.09 AC
NE 1/4 SE 1/4	-	6.79 AC
TOTAL =		61.59 AC



SCALE: 1"=400'

1898.03 FT



Irrigation Well Location (P.O.D.) 2151 ft. S. and 2225 ft. E. from NW Cor. Webb D.L.C. No. 56 or 253 ft. S. and 22 ft. W. from NE Cor. Parcel IV, Tax Lot 700

FINAL PROOF SURVEY UNDER

Application No. G-14115, Permit No. G-12932
In The Name Of
VINCENT STEINKAMP
Surveyed July 31, 2000, by John E. Borden

SW COR
J. WEBB
DLC NO. 56

JOHN BORDEN CONSULTING

4678 TREESIDE DR. N.E.
SALEM, OR. 97305
503-393-8736

STEINKAMP WATER RIGHT

FILE: Steinkamp Master (10-19-00).dwg