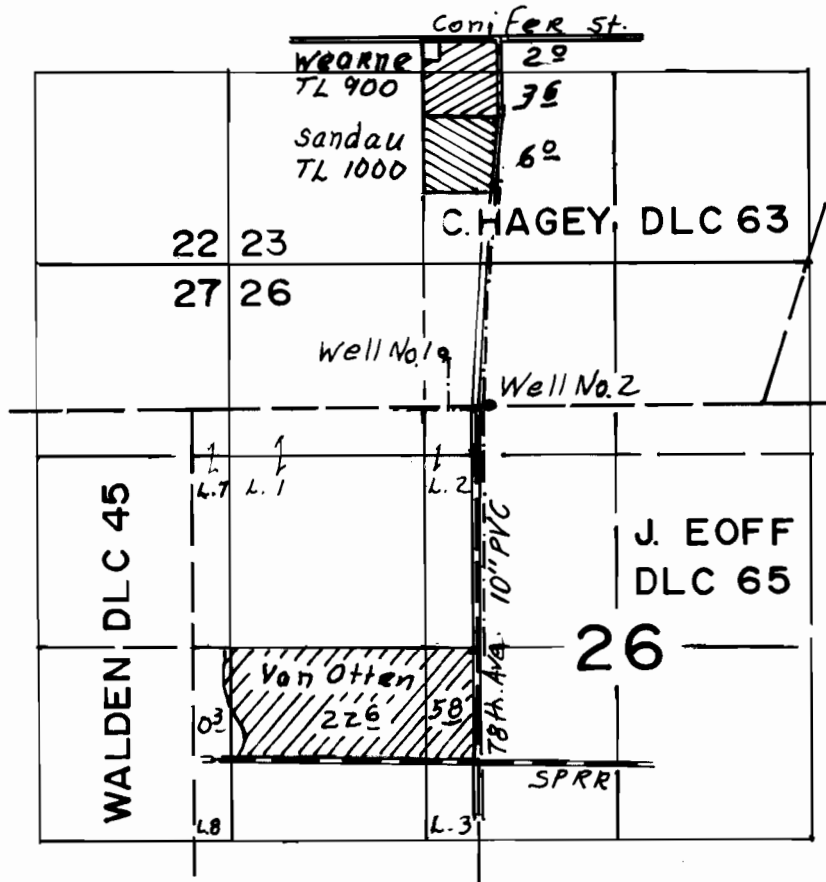


T. 7 S. R. 2 W., W.M.



Well No. 1 Loc. 336' N & 200' W FROM NW COR. DLC 65
 Well No. 2 Loc. 58' E FROM NW COR. DLC 65

FINAL PROOF SURVEY UNDER

Application No. G-14039 Permit No. G-13019
 IN NAME OF

DAN SANDAU

Surveyed Oct. 19, 1999, by

