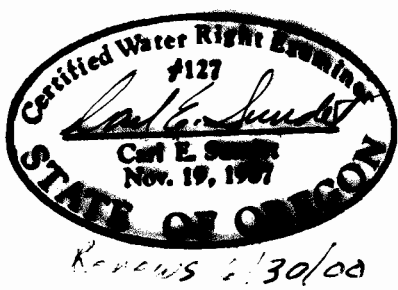
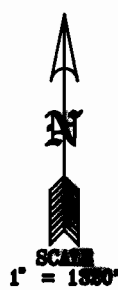
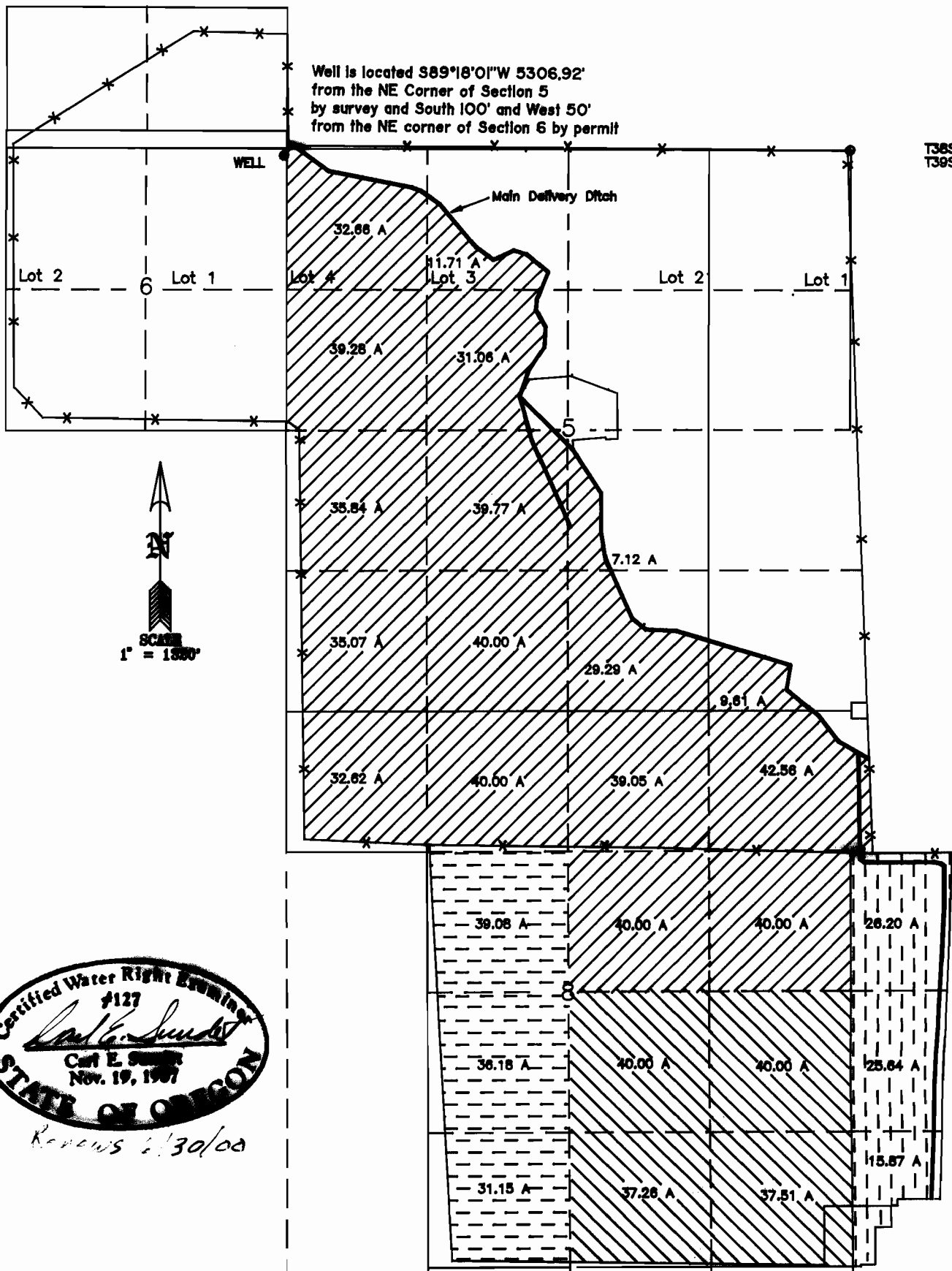


FINAL PROOF SURVEY  
 FLYING "A" RANCHES  
 Application G-12148 Permit G-13110





RECORDED  
 JUN 1999  
 WATER RESOURCES DIV  
 SALES & PERMITS

31



Surveyed for: Flying "A" Ranches  
 Surveyed by: Sundet & Associates  
 P.O. Box 1228  
 Lakeview, OR 97630  
 541-947-3293  
 Drawing Bunk3

1999

-  Primary  
67.71 Acres
-  Supplemental to GLD 5228  
545.64 Acres
-  Supplemental to GLD 5249  
154.77 Acres
-  Supplemental to GLD 5263  
106.41 Acres