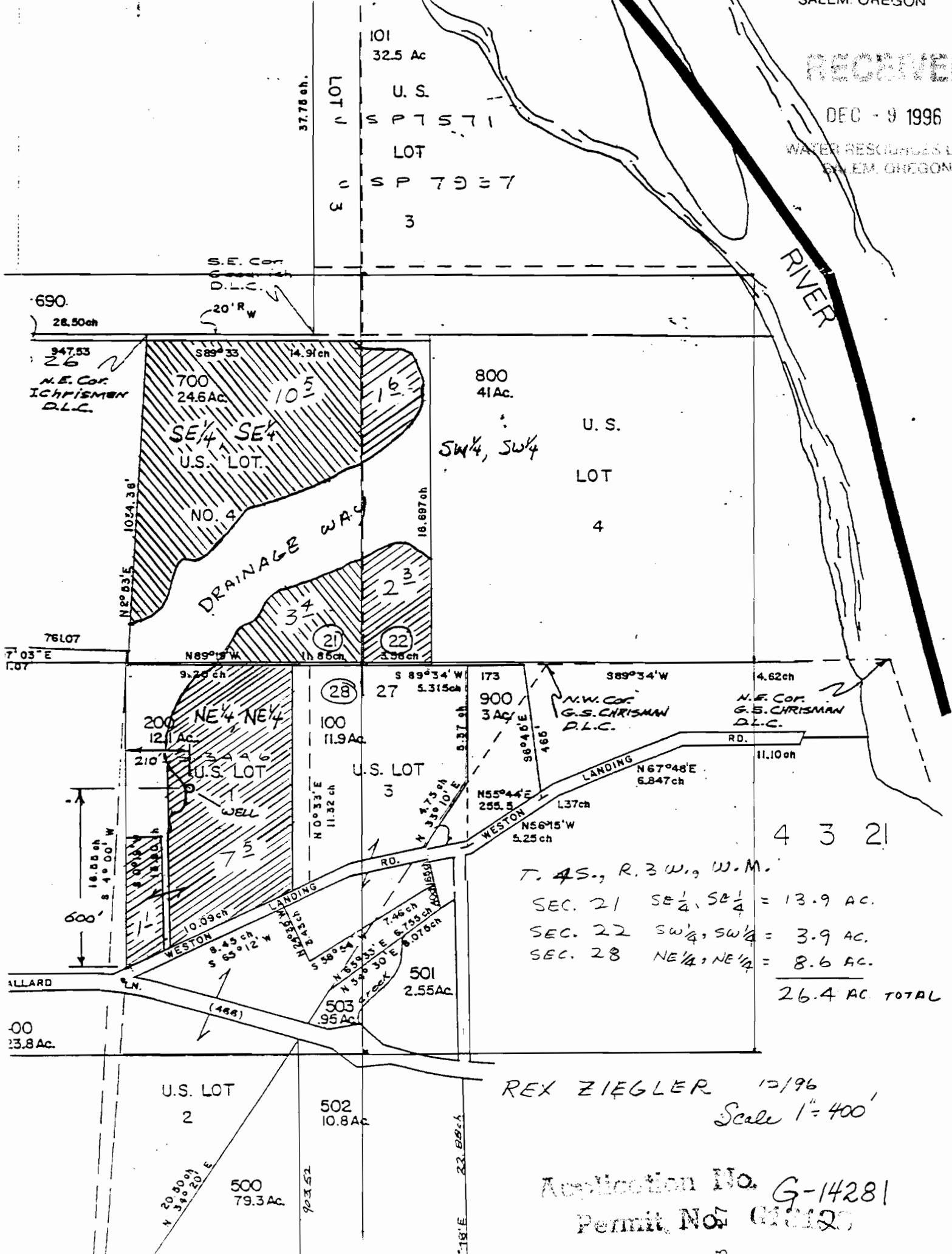


RECEIVED

DEC - 9 1996

WATER RESOURCES DEPT
SALEM, OREGON



T. 4S., R. 3W., W.M.

SEC. 21	SE 1/4, SE 1/4	= 13.9 AC.
SEC. 22	SW 1/4, SW 1/4	= 3.9 AC.
SEC. 28	NE 1/4, NE 1/4	= 8.6 AC.
		<hr/>
		26.4 AC. TOTAL

REX ZIEGLER 12/196
Scale 1" = 400'

Application No. G-14281
Permit No. G10120