

T. 8 S., R. 38 E.

T. 8 S., R. 39 E.

RECEIVED

Application No. G13988

FEB 23 1995

WATER DIVISION SAREMONT WYOMING

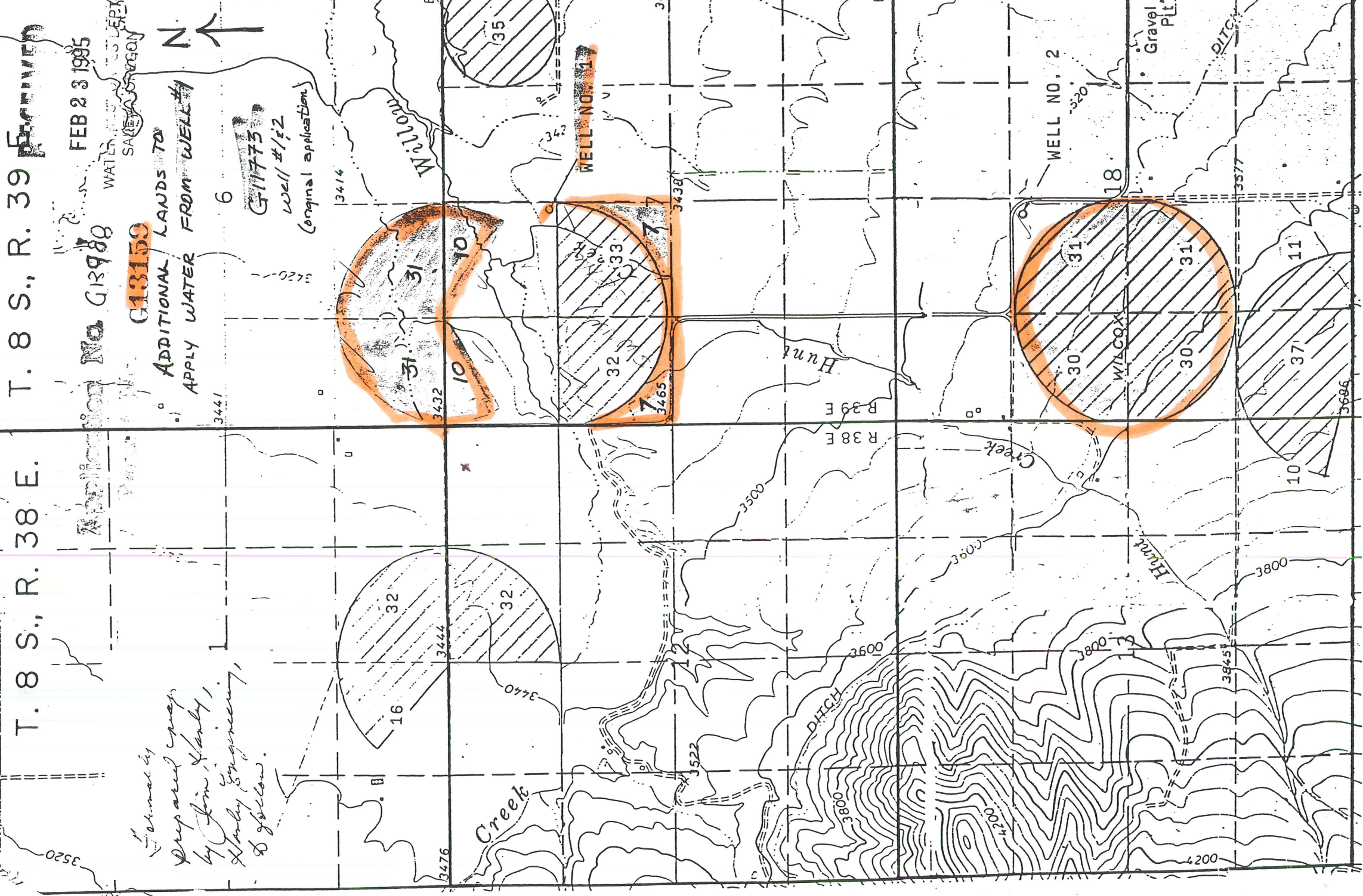
Formal copy prepared map by Jim Harby, Harby Engineering, & follow.

G13159

ADDITIONAL LANDS TO APPLY WATER FROM WELL # 6



6
G11773
Well #1#2
(original application)



SCALE 1" = 1320'

MAP TO ACCOMPANY
APPLICATION FOR PERMIT
TO APPROPRIATE GROUND WATER
FOR IRRIGATION