

T.3 S., R.39 E., W.M.
UNION COUNTY, OREGON

TABLE OF IRRIGATION AREAS

IN T.3S., R.39E., W.M., UNION COUNTY
TAX LOT 3000

SCALE:
1" = 1320'

SECTION 9		
SW 1/4 OF SE 1/4	32 AC.	<u>64 ACRES</u>
SE 1/4 OF SE 1/4	32 AC.	
<u>TOTAL</u>		

SECTION 16		
NW 1/4 OF NE 1/4	40 AC.	<u>305 ACRES</u>
NE 1/4 OF NE 1/4	40 AC.	
SW 1/4 OF NE 1/4	40 AC.	
SE 1/4 OF NE 1/4	40 AC.	
NW 1/4 OF SE 1/4	40 AC.	
NE 1/4 OF SE 1/4	40 AC.	
SW 1/4 OF SE 1/4	32.5 AC.	
SE 1/4 OF SE 1/4	32.5 AC.	
<u>TOTAL</u>		

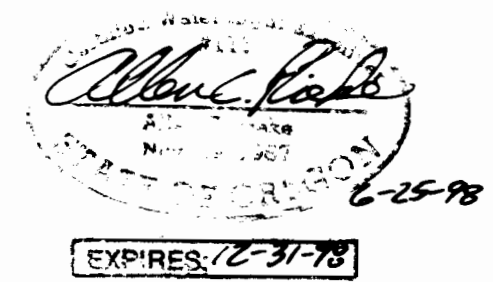
TOTAL AREA IRRIGATED = **369 ACRES**

LEGEND

● WELL LOCATION - 3260' NORTH AND 1335' WEST FROM THE SE CORNER OF SECTION 16, T.3S., R.39E.

NOTE: THIS MAP IS FOR THE PURPOSE OF LOCATING A WATER RIGHT ONLY AND IS NOT INTENDED TO PROVIDE LEGAL DIMENSIONS OR LOCATIONS OF PROPERTY LINES.

DATE OF SURVEY: 6-19-98



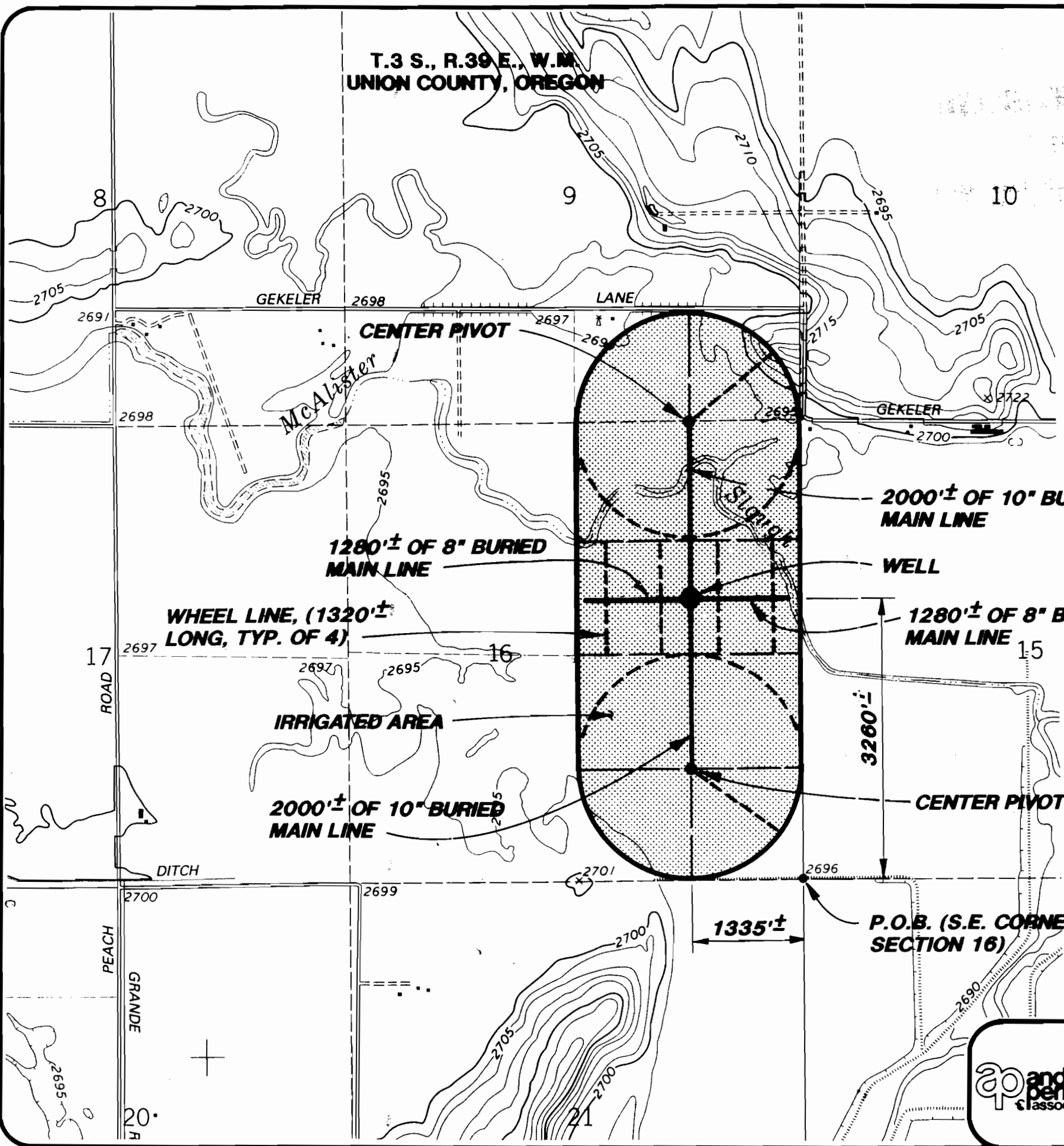
APPLICATION #G-13987 PERMIT #G-13166

CLAIM OF BENEFICIAL USE MAP

FOR: CONLEY FARMS
61050 CONLEY ROAD
COVE, OREGON 97824

FIGURE

1



105151