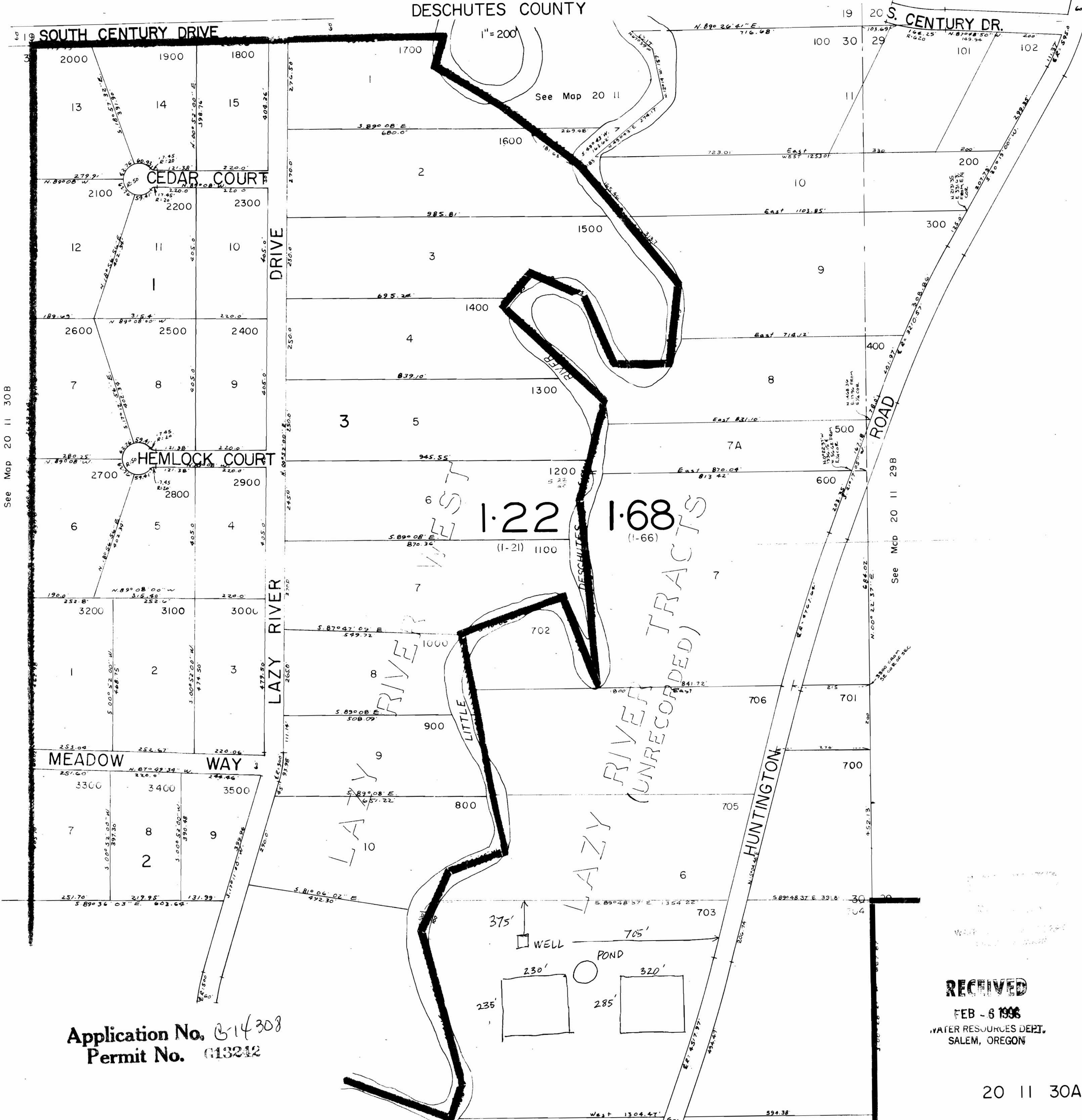


NE1/4 SEC. 30 T.20S. R.11E.W.M.
DESCHUTES COUNTY

dead numbers 301

20 11 30A



See Map 20 11 30B

See Map 20 11 29B

1-22 (I-21) 1100
1-68 (I-66)

RIVER TRACTS
(UNRECORDED)

Application No. B-14308
Permit No. G13242

RECEIVED
FEB - 6 1996
WATER RESOURCES DEPT.
SALEM, OREGON

20 11 30A