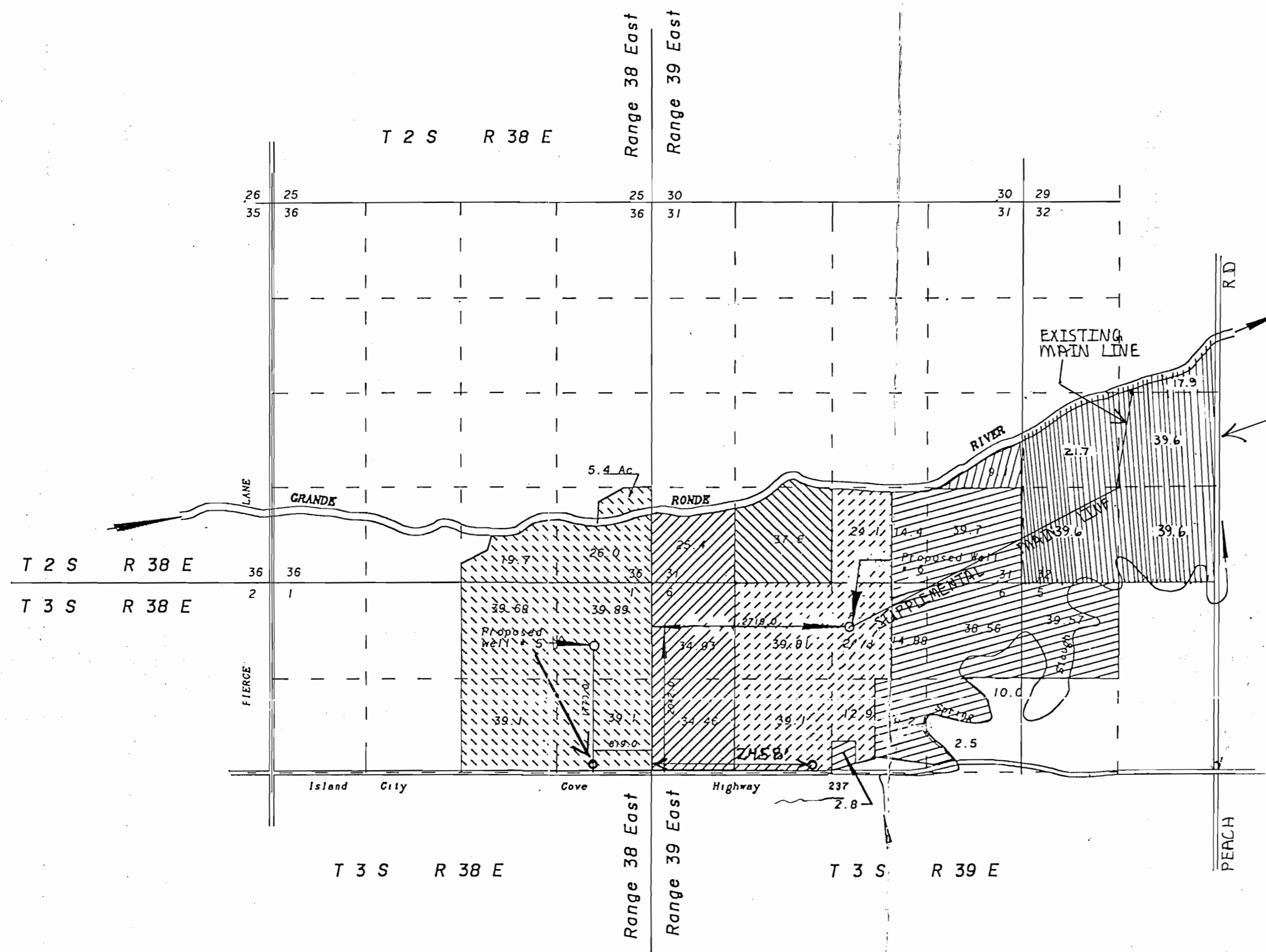








SCALE 1" = 1320'

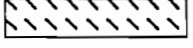


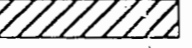
 LAND WITH PRIMARY WATER FROM GRANDE RONDE RIVER REQUESTING SUPPLEMENTARY WATER FROM WELL NO. 6. LAND OWNED BY DONALD T. MCCABE & WILLIAM A. DELASHMUTT TAX LOT 11500 2539

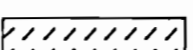
 Lands requesting primary water from well No. 6 and supplementary water from well No. 5. Lands owned by Etta L. Delashmutt and Donald T. McCabe.

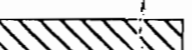
 Lands requesting primary water from well No. 6 and supplementary water from well No. 5. Lands owned by Etta Lucinda Delashmutt.

 Lands requesting primary water from well No. 6 and supplementary water from well No. 5. Lands owned by William A. Delashmutt.

 Lands requesting primary water from well No. 5 and supplementary water from well No. 6. Lands owned by Donald T. McCabe and Fern McCabe Bay.

 Lands requesting primary water from well No. 5 and supplementary water from well No. 6. Lands owned by Dorena Sue Bettis 1/2 interest and William A. Delashmutt 1/2 interest.

 Lands requesting primary water from well No. 6 and supplementary water from well No. 5. Lands owned by Donald T. McCabe

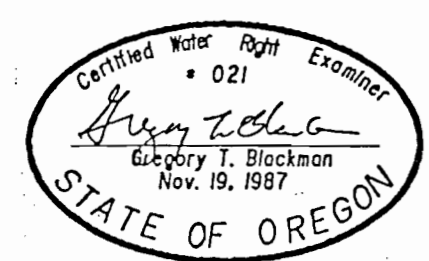
 Lands requesting primary water from well No. 6 and supplementary water from well No. 5. Lands owned by Dorena Sue Bettis 1/2 interest and William A. Delashmutt 1/2 interest.

RECEIVED
JAN 2 8 1997
WATER RESOURCES DEPT.
SALEM, OREGON

PROJECT NUMBER 1
APPLICATION FOR
SUPPLEMENTARY WATER RIGHTS T2SR39E.W.M.
FOR
Donald T. McCabe &
William A. DeLashmutt

BY
BAGETT - GRIFFITH & BLACKMAN
2006 ADAMS AVENUE
LAGRANDE, OREGON 97850

January 6, 1996
APPLICATION NO. G-14357
PERMIT NUMBER 118255



NOTE: The preparation of this map was for the purpose of identifying the location of the proposed water right and has no intent to provide dimensions or location of property ownership lines. Location information shown hereon was furnished by the applicant.