

3 Wells Located T.15S R.12E S.15, TAX Lot 803

1962 Well - 770' West AND 266' South of N.E. Corner of Section 15 4" casing

1971 Well - 778' West AND 300' South of N.E. Corner of Section 15 6" casing

1996 Well - 788' West AND 270' South of N.E. Corner of section 15 (L02752) 7" casing

MAP 1 of 3

JUN 21 1996

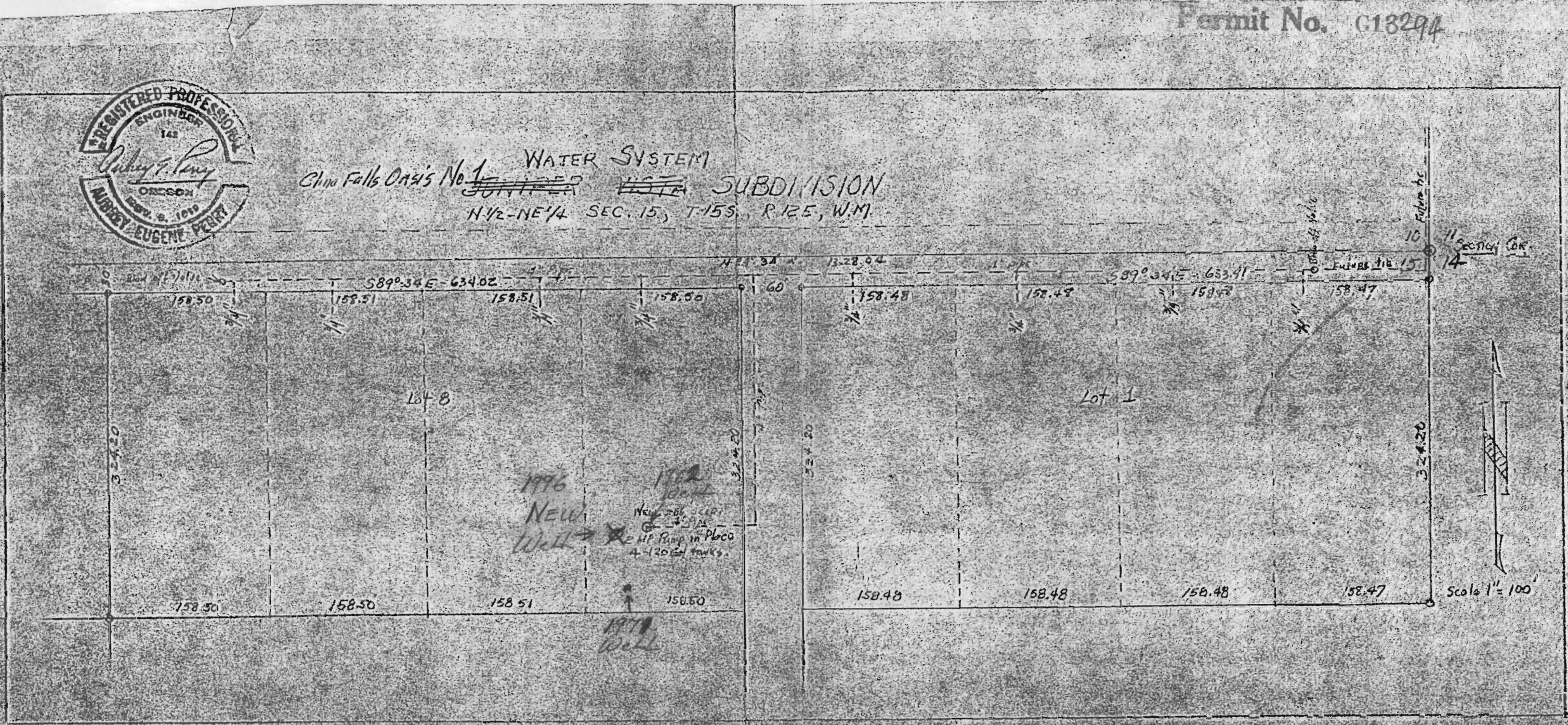
WATER RESOURCES DEPT.
SALEM, OREGON

Application No. G-14338

Permit No. G13294



CHINA FALLS DAMS No. 1 WATER SYSTEM
SUBDIVISION
N 1/2 - NE 1/4 SEC. 15, T.15S., R.12E, W.M.



1996
NEW
Well →
New 200' casing
2 HP Pump in place
4-120' tanks.

1971
Well

RECEIVED

JUL - 5 1996

WATER RESOURCES DEPT.
SALEM, OREGON

RECEIVED

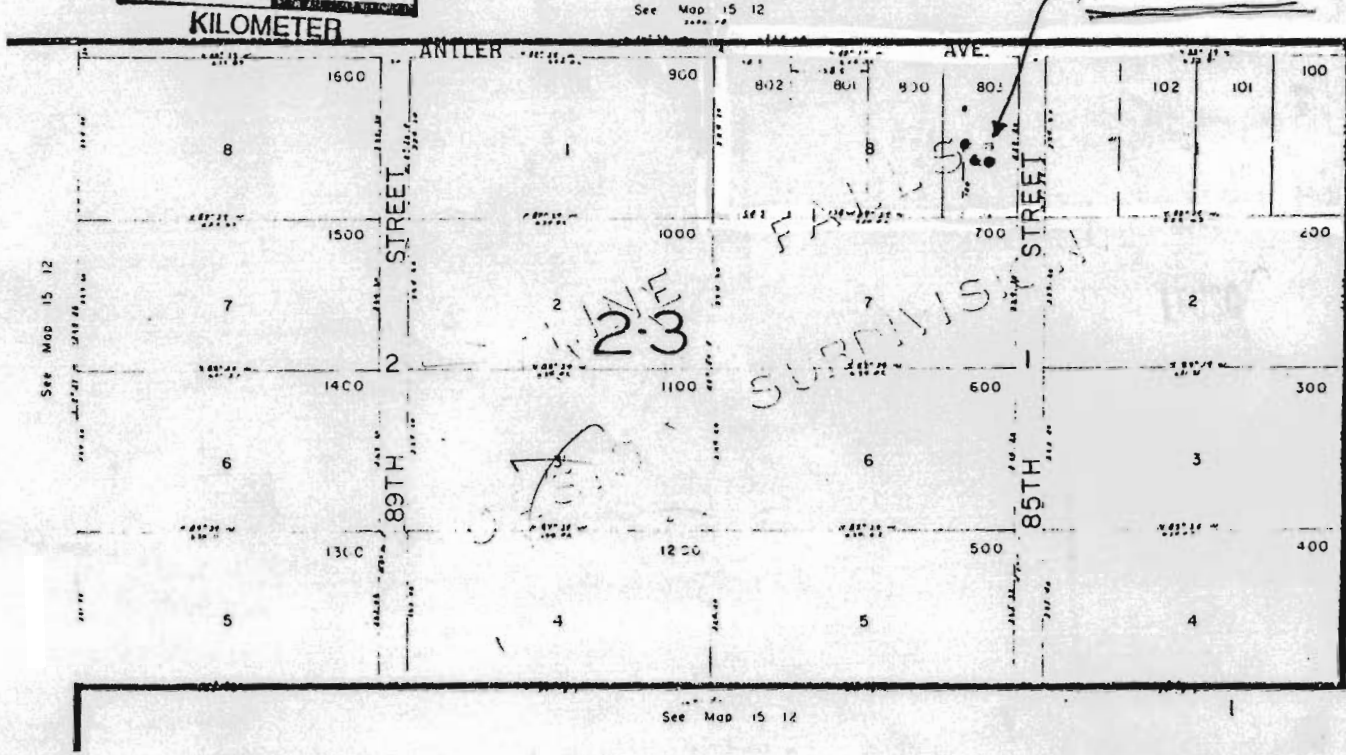
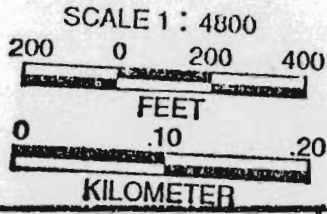
JUN 24 1996

WATER RESOURCES DEPT.
SALEM, OREGON

NE1/4 SEC. 15 T.15S. R.12E.W.M.
DESCHUTES COUNTY
1" = 200'

dead numbers 103

15 12 15A
RR10



A
N

Application No. G-14338
Permit No. G13294
MAP 2083

RECEIVED

JUN - 5 1996

WATER RESOURCES DEPT.
SALEM, OREGON

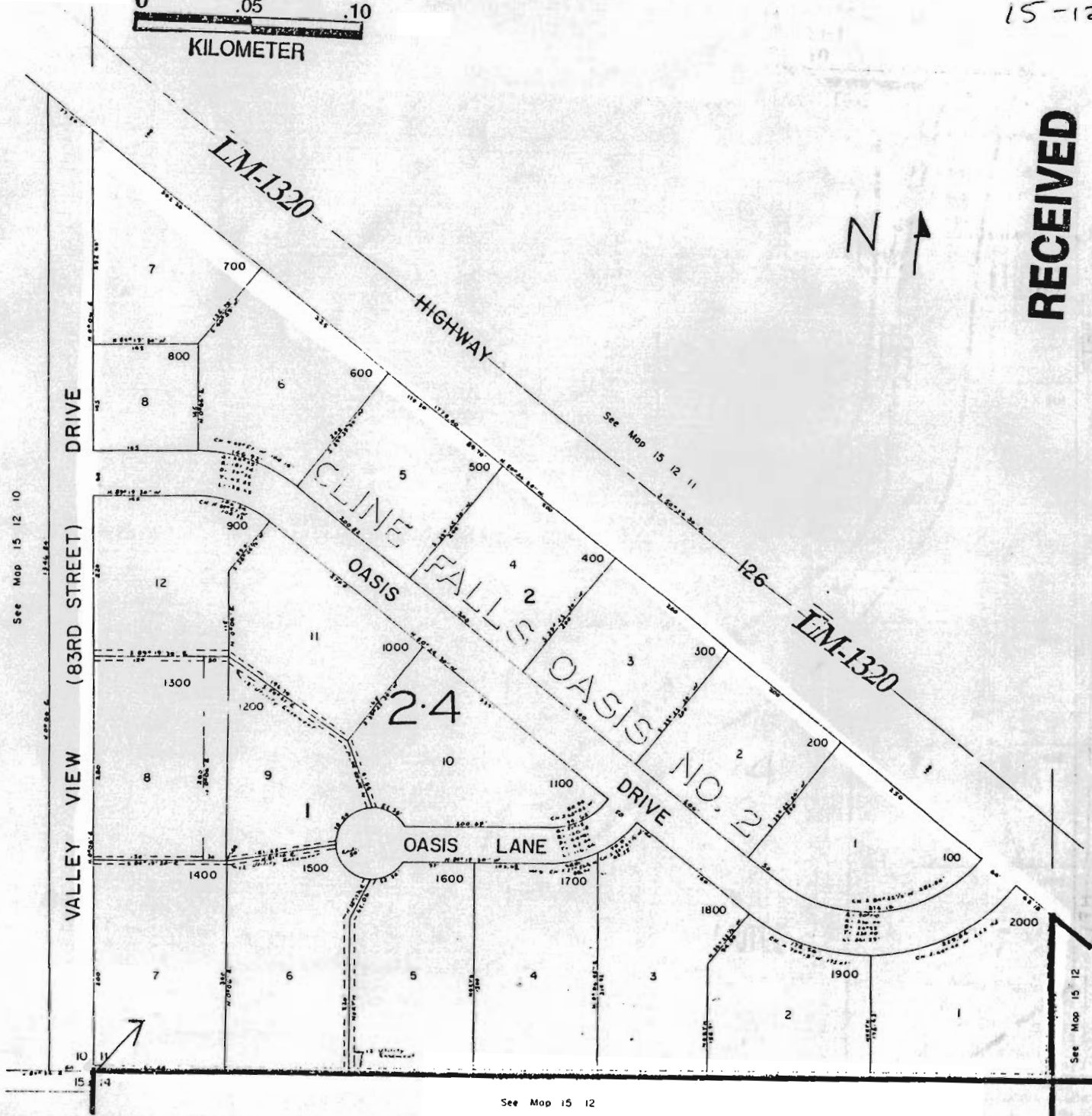
RECEIVED

JUN 24 1996

WATER RESOURCES DEPT.
SALEM, OREGON

Application No. G-14338
Permit No. G13294

Map 3 of 3



SW1/4 SEC. 11 T15S. R12E.W.M.
DESCHUTES COUNTY

1" = 100'

15 12 1100
RR10

15-12-1100

RECEIVED

JUN - 5 1996

WATER RESOURCES DEPT.
SALEM, OREGON

See Map 15 12 10

See Map 15 12

See Map 15 12