

Appl. *G (444)*
 Permit **G13341**

Sec. 28, T. 9 S., R 1 W, W.M.
 showing SE 1/4 and tax lot 1401
 1" = 400'

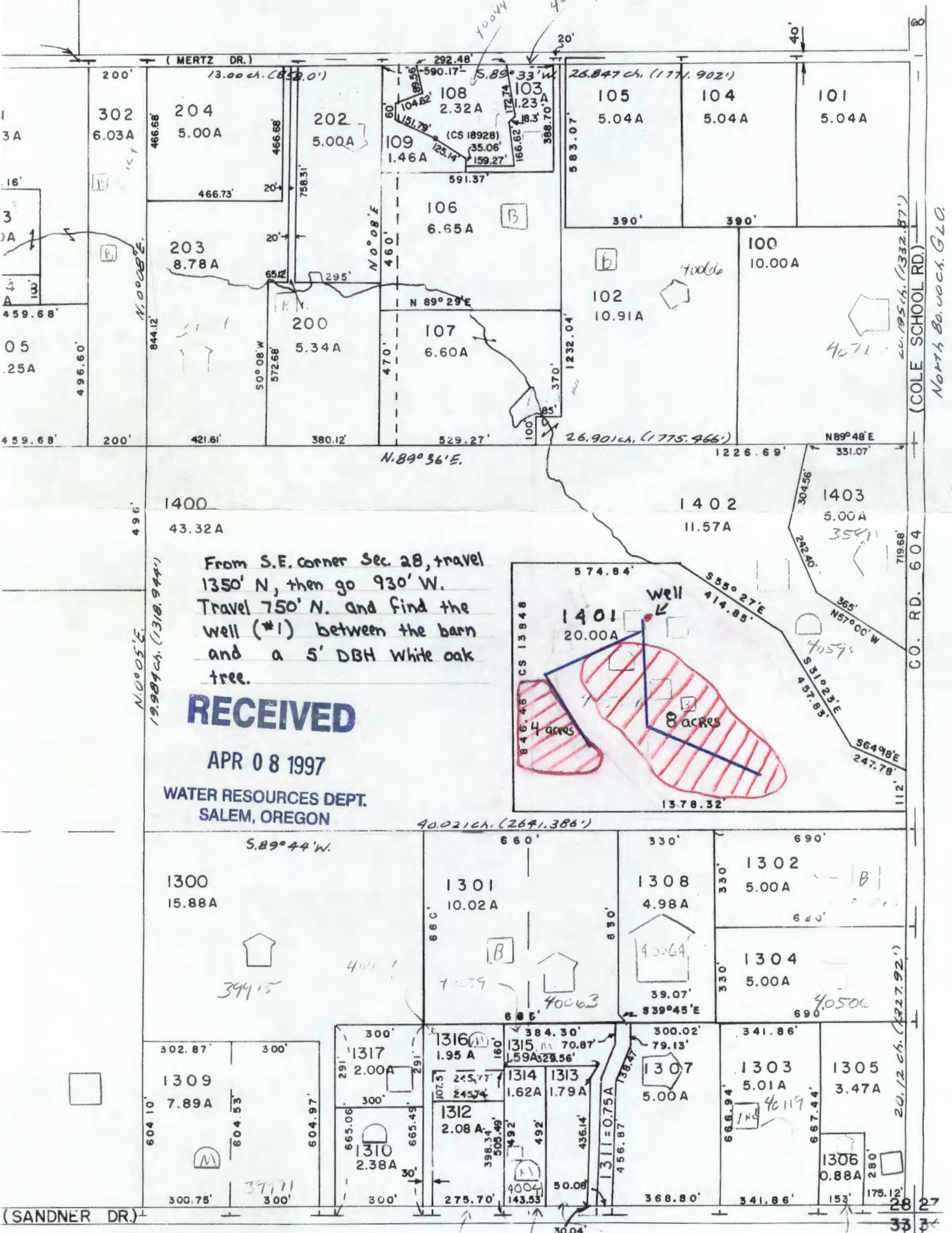
9-1W 28

See Map 9 1W 21



//// = irrigated area

— Water lines



From S.E. corner Sec. 28, travel 1350' N, then go 930' W. Travel 750' N. and find the well (#1) between the barn and a 5' DBH white oak tree.

RECEIVED

APR 08 1997

WATER RESOURCES DEPT.
 SALEM, OREGON

$S. 89^{\circ} 56' W$, 79.80 ch. G.L.O.

28 27
 33 34