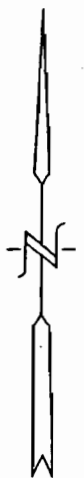


App. 6-14580
 Permit G13421

NE. COR. SEC. 20
 TWP.2 N., RANGE 13 E.

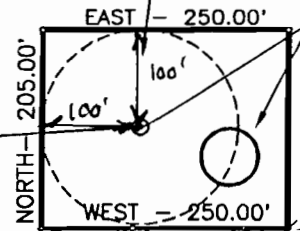


SCALE: 1" = 200'

NE 1/4 NE 1/4

EXISTING WELL
 701.40 S
 1081.66 W
 NE Cor.
 SEC 20
 T2N R13E

TRACT 1
 (WINGENS RESERVOIR SITE)
 1.177 AC. M/L

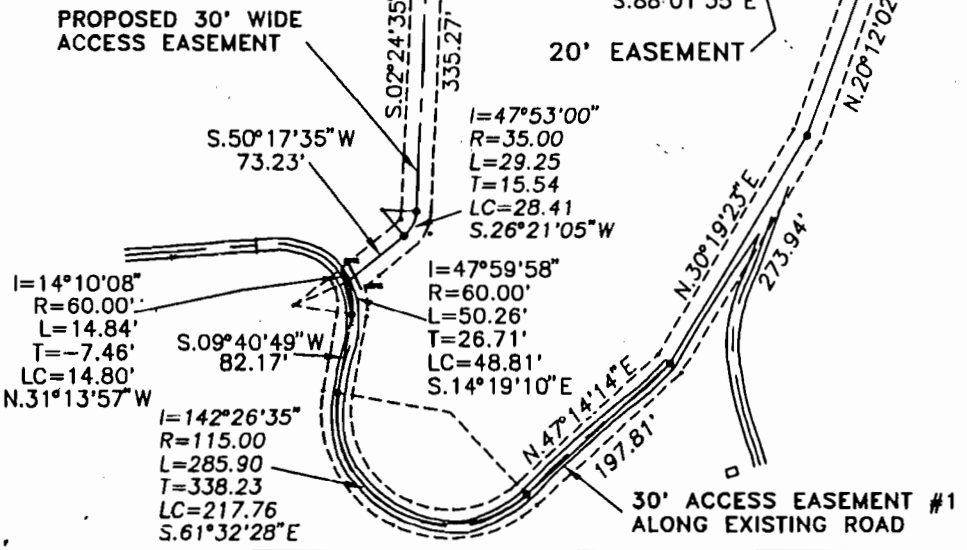


EXISTING RESERVOIR

PROPOSED 30' ACCESS AND PUBLIC UTILITY EASEMENT

U.S. HIGHWAY No. 30
 (HISTORIC COLUMBIA RIVER HWY.)

FRANZ-TAYLOR ROAD



WATER RESOURCES DEPT
 SALEM, OREGON

DEC 11 1997

RECEIVED

Date	NO.	Revisions	
Design	Scale	1" = 200'	
Survey	Date	10-31-96	
Drawn	Sheet	S.D.H. 1 of 1	
ACAD FILE No.	Work Order No.	S8731RE1 8431	

EXHIBIT "A"
 WINGENS RESERVOIR EASEMENTS
 COLUMBIA GORGE DISCOVERY CENTER
 IN THE NE.1/4 OF SECTION 20,
 TWP.2 N., RANGE 13 E. W.M.
 WASCO COUNTY, OREGON