

Permit: G 13422  
Vol: 6A  
Strm: 1 Well  
Trib: Williams Cr  
Priority: 8/7/1997

MAY 27 1998  
WATER RESOURCES DEPT.  
SALEM, OREGON

14

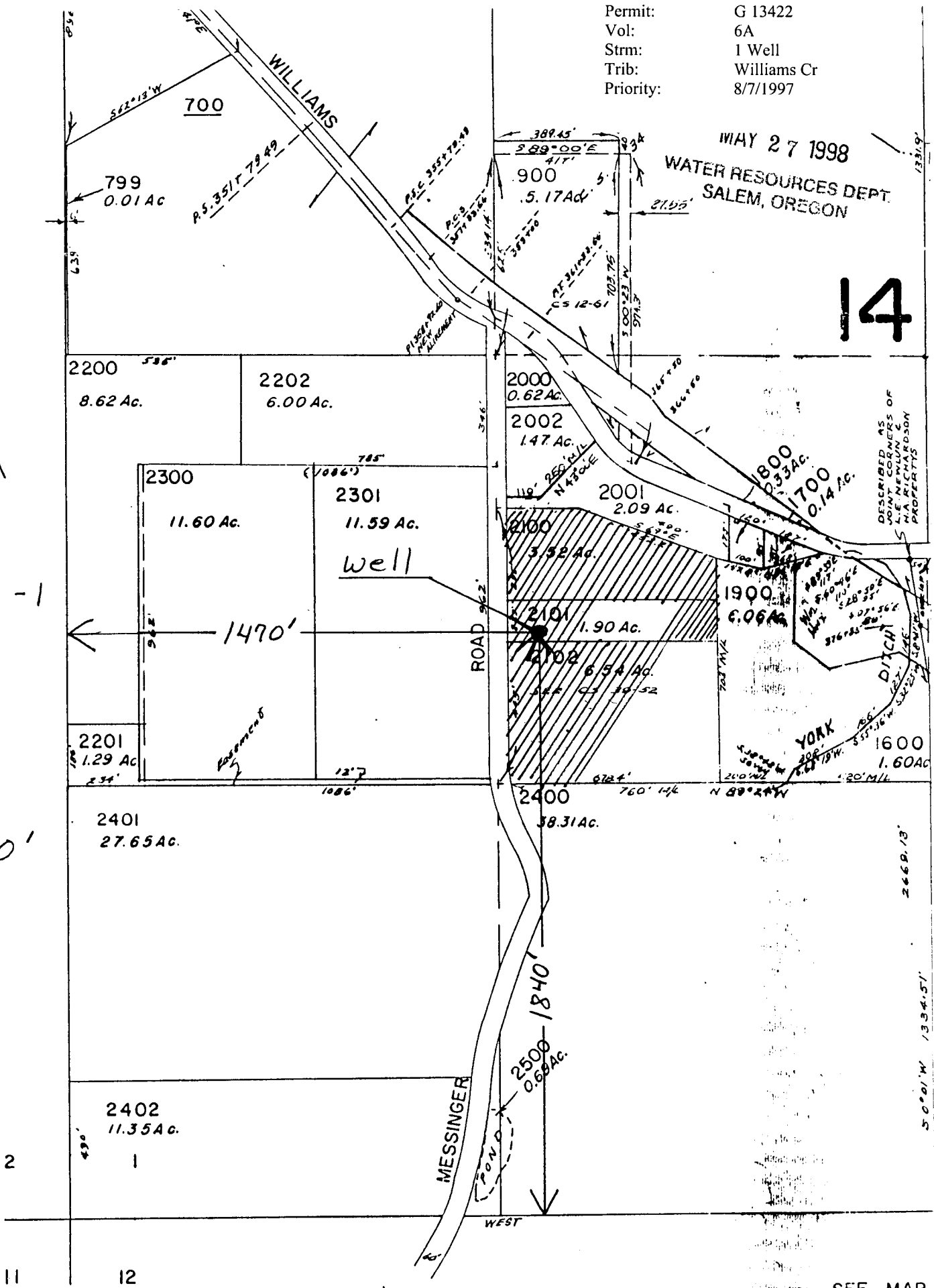
SEE MAP 38 5 2

N ↑

38s-5w-1

Scale

1" = 400'



Application # G-14590  
Permit G13422

SEE MAP