

RECEIVED

NOV 6 1997

PLANNING DEPT
Salem, Oregon

G 14634

exhibit A
T3S., R3W., W.M.

SW 1/4 Section 27
2.33 AC.

SE 1/4 Section 27
26.22 AC.

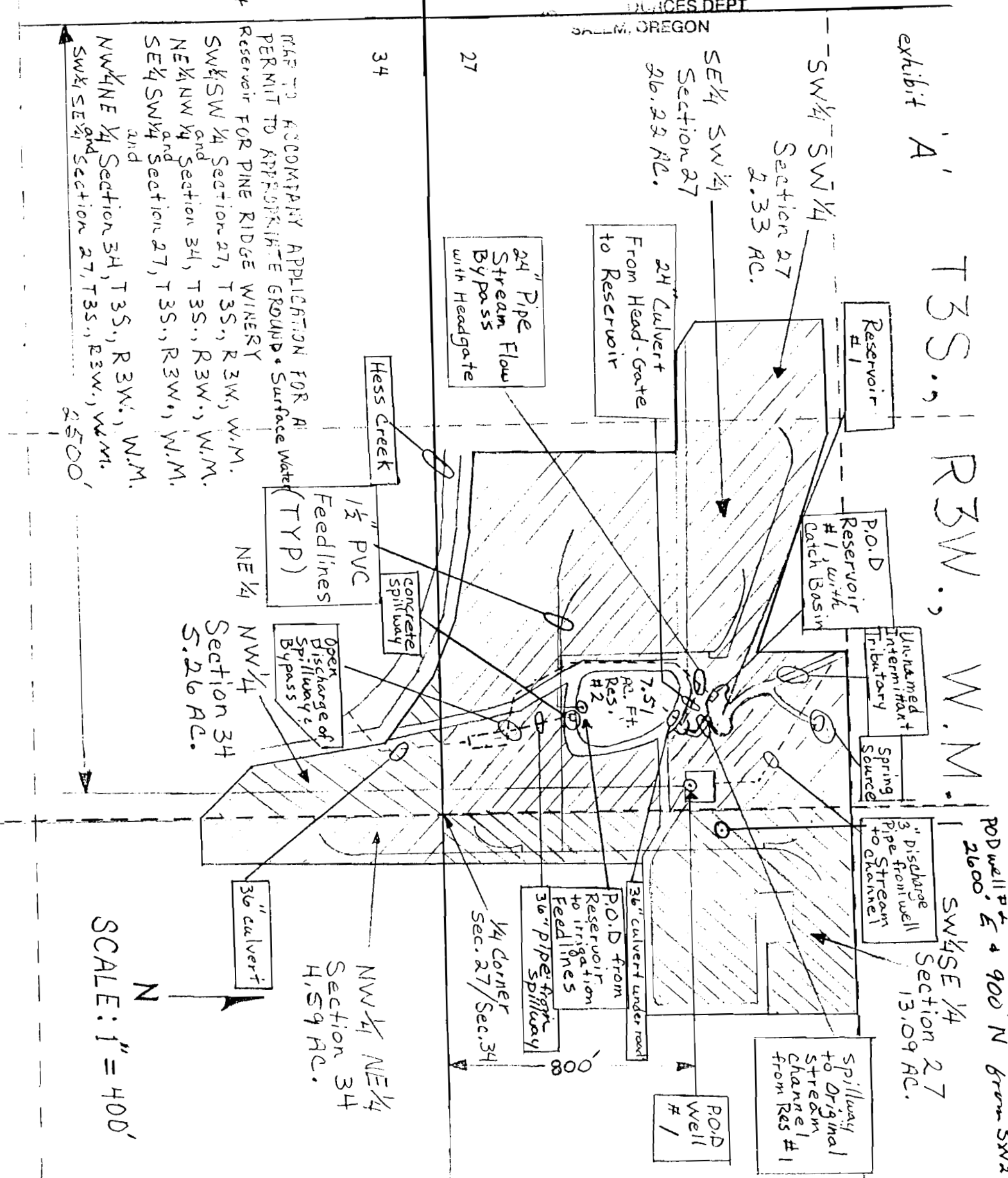
28

27

33

34

MAP TO ACCOMPANY APPLICATION FOR A PERMIT TO APPROPRIATE GROUND SURFACE WATER RESERVOIR FOR PINE RIDGE WINERY SW 1/4 Section 27, T3S., R3W., W.M. NE 1/4 Section 34, T3S., R3W., W.M. SE 1/4 Section 27, T3S., R3W., W.M. and NW 1/4 Section 34, T3S., R3W., W.M. SW 1/4 Section 27, T3S., R3W., W.M. and SW 1/4 Section 27, T3S., R3W., W.M. 2500'



POD well # 4 & 900' N from SW 1/4 2600'

SW 1/4 SE 1/4 Section 27
13.09 AC.

Spillway to Original Stream Channel #1 from Res #1

POD Well # 1

36" culvert under road
P.O.D. from Reservoir to irrigation feedlines
36" pipe spillway

1/4 corner sec. 27/Sec. 34

NW 1/4 NE 1/4 Section 34
H, S, 9 AC.

36" culvert

SCALE: 1" = 400'