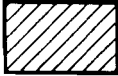



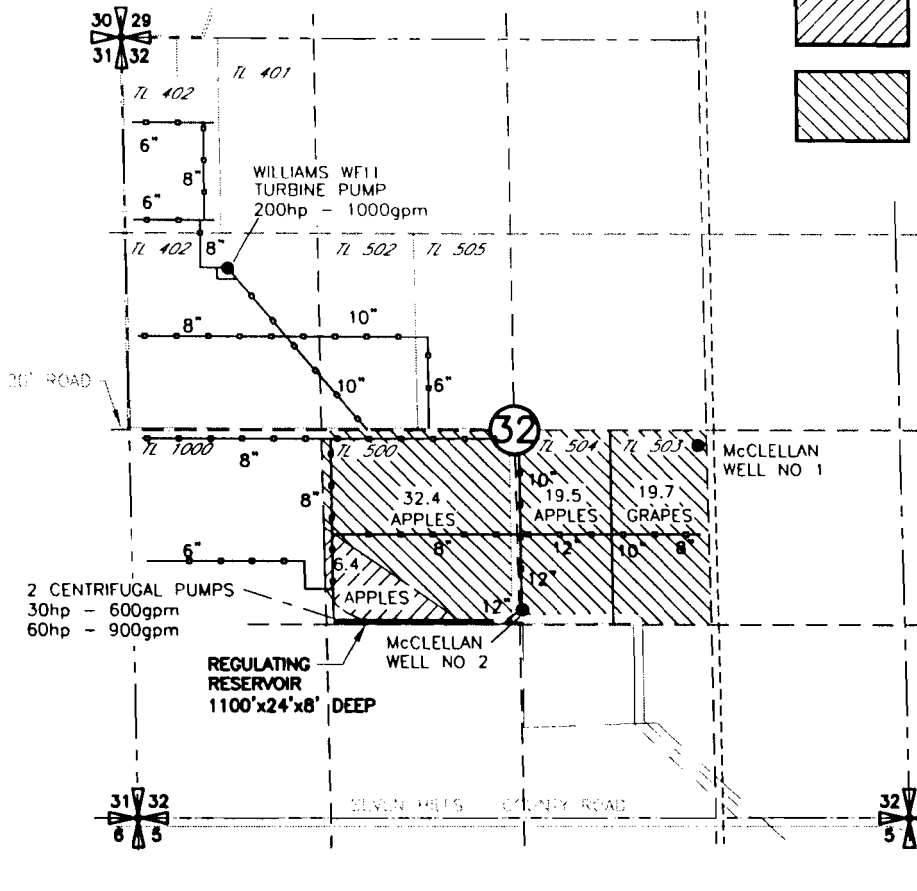


FINAL PROOF MAP
 OF PERMIT G-13431
 FOR
 ESTATE OF JAMES McCLELLAN
 T6N, R35E

G-14309

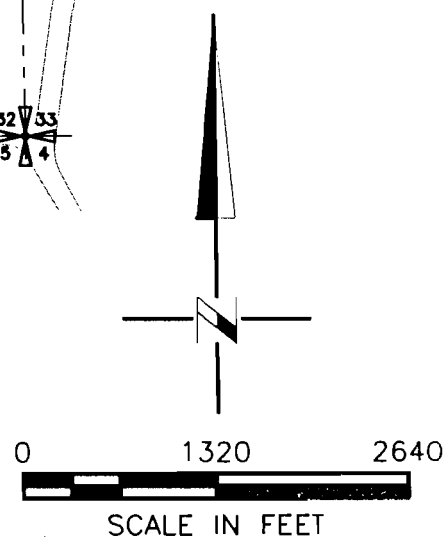
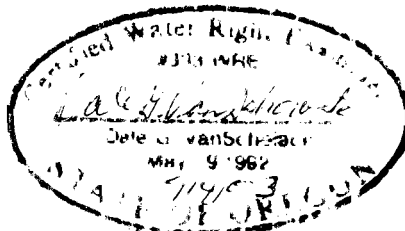
LEGEND

-  PRIMARY IRRIGATION
-  SUPPLEMENTAL IRRIGATION
-  AGRICULTURAL USE (TEMPERATURE CONTROL AND FROST PROTECTION)
- 



RECEIVED
 WATER RESOURCES DEPT.
 SALEM OREGON

POINTS OF APPROPRIATION
 McCLELLAN WELL NO 2
 LOCATED 1418' N AND 22.1' E FROM THE
 S 1/4 CORNER OF SEC 32



DRAWING: H:\CAD\AG\3522\172\3522172FP.DWG
 PRINTED BY: rogerw on 09/04/03 08:08 AM
 9/04/03

NOTE:
 THE PURPOSE OF THIS MAP IS TO IDENTIFY THE APPROXIMATE LOCATION
 OF THE WATER RIGHT. IT IS NOT INTENDED TO PROVIDE INFORMATION
 RELATIVE TO THE LOCATION OF PROPERTY OWNERSHIP BOUNDARY LINES.