

1. LEGAL DESCRIPTION OF PROPERTY TO BE IRRIGATED: 10 acres, SW1/4 NE1/4; Section 6; Township 2 North, Range 30 East, W.M., Tax Lot number 1800.

2. DESCRIPTION OF POINT OF APPROPRIATION: approximately 525 feet North and 200 feet East, from the center of Section 6, Township 2 North, Range 30 East, W.M.

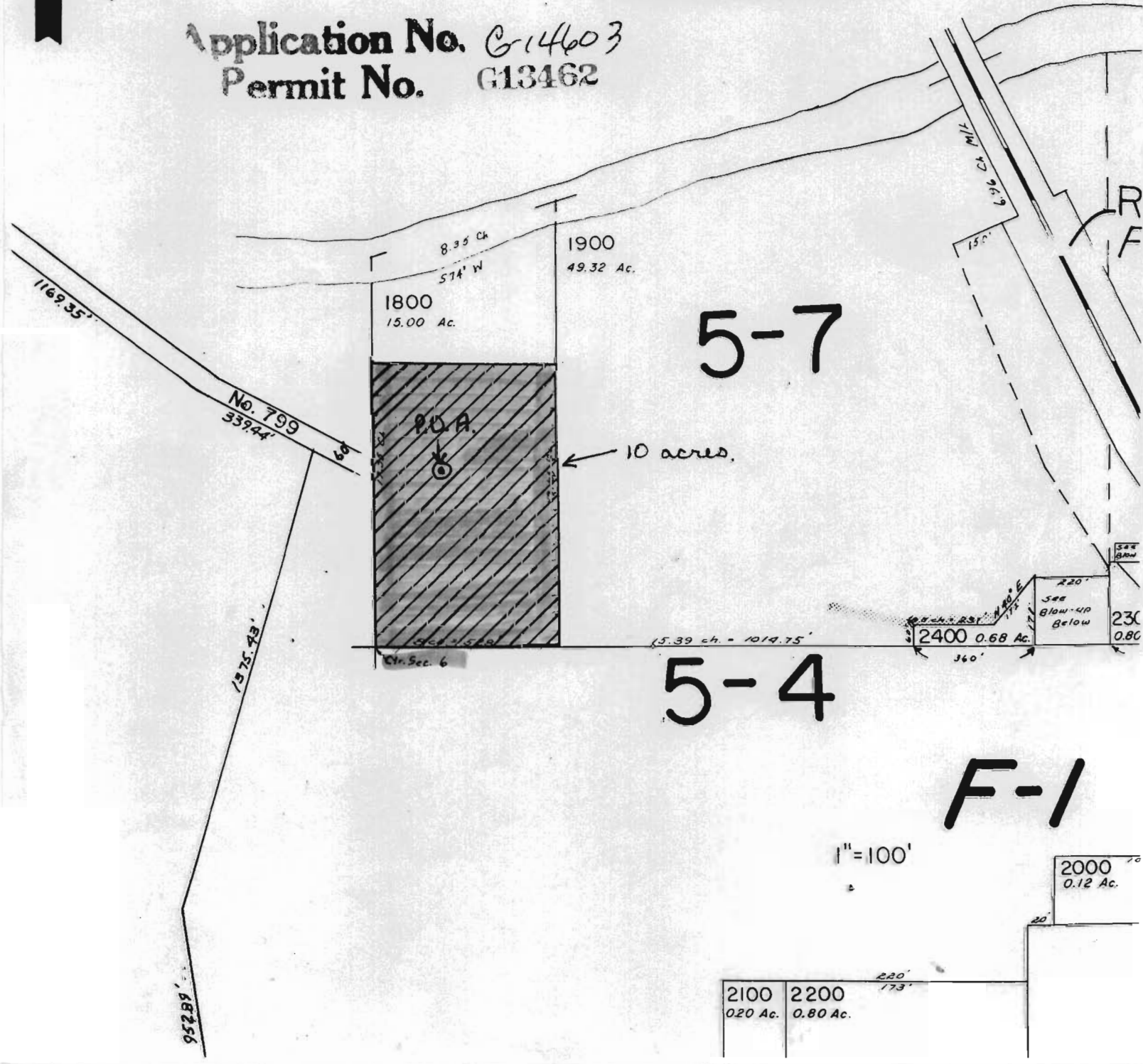
RECEIVED

SEP - 5 1997

WATER RESOURCES DEPT.  
SALEM, OREGON

SCALE = 1" = 400'

Application No. G14603  
Permit No. G13462



5-7

5-4

F-1

1" = 100'

2100	2200
0.20 Ac.	0.80 Ac.

2000  
0.12 Ac.

See  
Blow-up  
Below

2300  
0.80

20'

220'  
173'

1375.43'

1375.43'

No. 799  
339.44'

1169.35'

1800  
15.00 Ac.

1900  
49.32 Ac.

8.35 Ch

574' W

P.O.A.

← 10 acres.

Chr. Sec. 6

15.39 ch. = 1014.75'

2400 0.68 Ac.

360'

See  
Blow-up  
Below

2300  
0.80

20'

220'  
173'

2100	2200
0.20 Ac.	0.80 Ac.

2000  
0.12 Ac.